

2020  
GUIDE

PACIFICA  
GRADUATE INSTITUTE



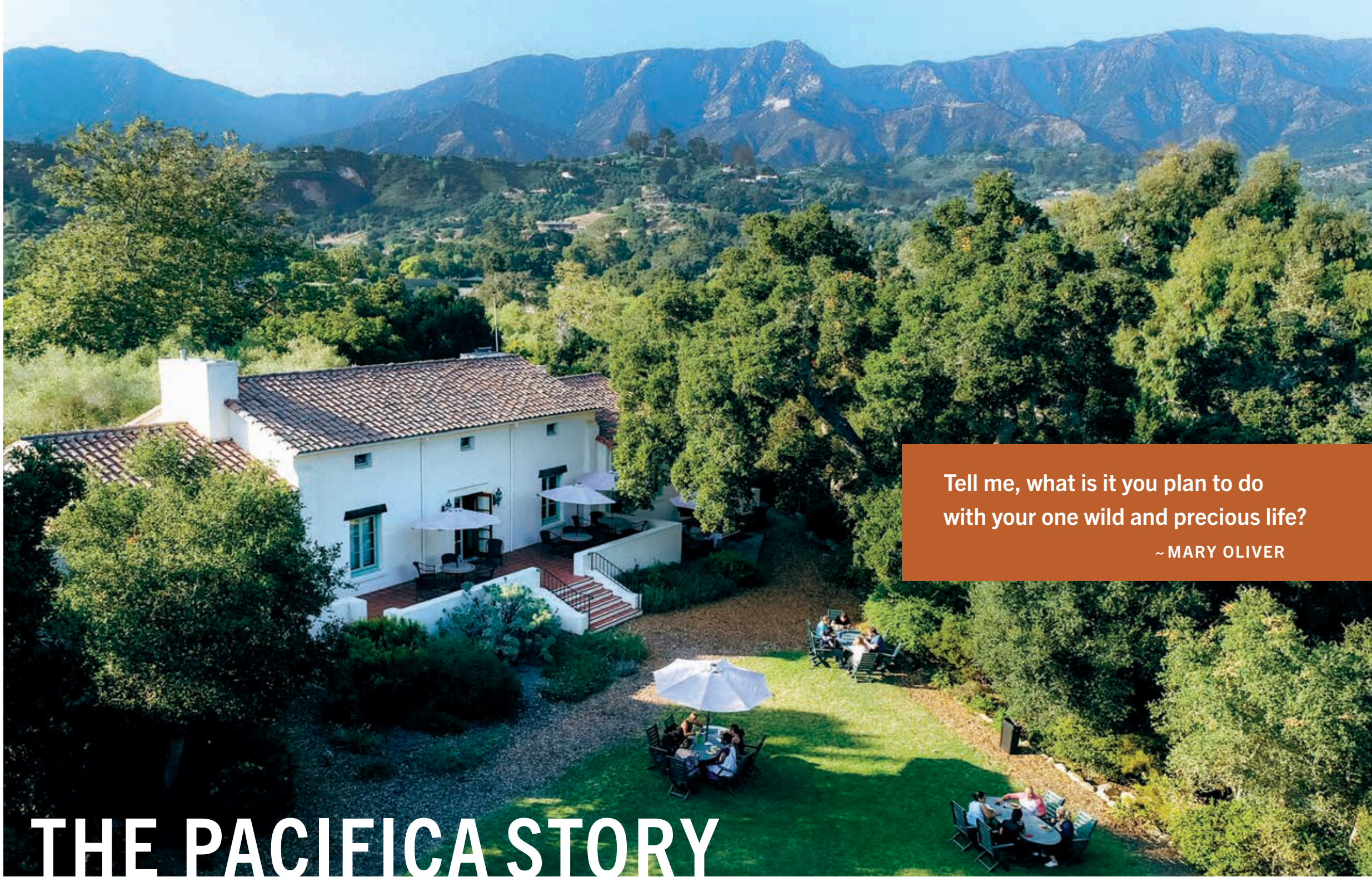


# WELCOME

We invite you to explore this Guide and learn more about Pacifica Graduate Institute and its master’s and doctoral degree programs.

## THE PACIFICA GUIDE

Depth Psychological Orientation .....	2
Pacifica Alumni Stories .....	4
A Personalized Education .....	6
Exceptional Academic Resources .....	8
A Unique Setting .....	10
The Lambert Road Campus .....	12
The Ladera Lane Campus .....	14
Special Events at Pacifica in 2020 .....	16
Degree Programs Overview .....	18
M.A. in Counseling Psychology .....	20
Psy.D. in Counseling Psychology .....	24
M.A./Ph.D. in Clinical Psychology .....	28
M.A./Ph.D. in Depth Psychology with Specialization in Jungian and Archetypal Studies .....	32
M.A./Ph.D. in Depth Psychology with Specialization in Community, Liberation, Indigenous, and Eco-Psychologies.....	36
Ph.D. in Depth Psychology with Specialization in Integrative Therapy and Healing Practices .....	40
M.A./Ph.D. in Mythological Studies.....	44
M.A. in Engaged Humanities and the Creative Life .....	48
Faculty and Administration .....	52
Application and Admissions Process .....	56
Scholarships and Financial Aid .....	58
Visit Pacifica .....	60



Tell me, what is it you plan to do  
with your one wild and precious life?  
~ MARY OLIVER

# THE PACIFICA STORY

**Pacifica Graduate Institute is an innovative, employee-owned graduate school dedicated to the purpose expressed in its motto: *animae mundi colendae gratia*—for the sake of tending soul in and of the world.**

**Pacifica’s genesis** was in response to the Vietnam War and cultural upheaval of the 1970s. In the university town of Isla Vista, California, a group of concerned individuals saw returning veterans, families, and young people in distress. They gathered resources and developed a community counseling outreach program to aid those around them.

**That community initiative evolved** into a graduate program in counseling psychology. What was then known as the Human Potential Movement influenced both the degree program and its founders. Following the push of the times and their own calling, they attended workshops and trainings at the Esalen Institute in Big Sur, California. There they came to know Joseph Campbell, James Hillman, and the work of Marion Woodman. These pioneering thinkers made frequent trips to Santa Barbara and offered support as the school and its programs evolved.

These mentors helped what was then The Human Relations Institute grow into Pacifica Graduate Institute—a respected and accredited graduate school firmly rooted in the traditions of depth psychology.

**Today the world is quite different**, yet remarkably the same. Troubled veterans return from war, society faces a partisan divide, and truth is so often elusive. It will take a new generation of therapists, community activists, and storytellers to meet these challenges.



# ACADEMIC EXCELLENCE WITH A DEPTH PSYCHOLOGICAL ORIENTATION

The concepts and practices at the core of contemporary depth psychology are central to Pacifica's graduate degree programs. Each program's curriculum is infused with depth psychological ideas.



CARL G. JUNG



JOSEPH CAMPBELL



PAULO FREIRE



MARION WOODMAN



JAMES HILLMAN

Pacifica's degree programs expand upon the work of the innovators, scholars, and original thinkers who helped to create and develop the modern field of depth psychology.



## WHAT IS DEPTH PSYCHOLOGY?

Through the study of dreams, images, symptoms, slips of the tongue, spontaneous humor, and meaningful coincidences as well as interpersonal engagements, depth psychologists attempt to understand **the language and the dynamics of unconscious processes** as they manifest in their work with clients and in the world.

Depth psychological approaches to psychological suffering attempt to help us become aware of what has been cast out of consciousness or not yet able to be known. Healing is associated with **allowing what has been repressed, rejected, denied, or ignored to come forward so that we can explore its significance and integrate it**, allowing for a transformation in consciousness.

Evidence for the effectiveness of depth psychological approaches to psychotherapy shows that **depth psychology has a longer-lasting and more profound impact than cognitive or behavioral psychologies alone**.

Depth Psychology also attends to the way unconscious processes express themselves in society and culture, and how culture affects the psyche. Depth psychological studies include **psychotherapy as well as community, cultural, and ecological issues**. Pacifica students and graduates help the field evolve through their scholarship, creative work, and actions in the world.

## EXPANDING ON A DYNAMIC TRADITION

The tradition of depth psychology can be traced all the way back to ancient storytellers, dramatists, and philosophers—those individuals from all walks of life who sought to record the workings of the human imagination. From their work we learned that the **multiple dimensions of psychic reality are revealed in the art and literature of different cultures**, and in the maladies of individuals and communities.

The modern academic and practical field of depth psychology originated with the work of **Carl Jung and Sigmund Freud** in the early 20th century. They highlighted the importance of what lies below the level of conscious awareness, and they pioneered methods of association, amplification, and active imagination in order to explore it. Their work was advanced and expanded upon by original thinkers such as Joseph Campbell, Marion Woodman, Paulo Freire, and James Hillman.

## THE RELEVANCE OF DEPTH PSYCHOLOGY IN TODAY'S WORLD

In this current time of global warming, mass violence, and political polarization, **the Pacifica community is evolving new ways for depth psychology to address the concerns of the world we live in**.

We start with how we treat one another, for this is integral to the soul of the world. Empathy needs to be grounded in its archetypal base, acknowledging resonance with the roots of all being, transcending the individual, becoming communal in the broadest sense, including the *Anima Mundi*, the soul of the world.

The larger issues of environmental degradation, social injustice, and the polarization of society with racist and xenophobic fears require greater attention in our educational system.

**A new paradigm is required** where learning and community are integrated at affective and somatic levels as well as through cognitive understandings: conscious and unconscious, personal and collective activations all need to be considered. Learning to recognize and take into account the deep connection between natural and human events can begin healing the historical wounds from a soulless, mechanistic understanding of reality.

The complexity of our emerging world requires us to **cultivate new ways of knowing and being with one another**, with attunement to the holistic aspect of the environments we live in. Only through deeply felt awareness of the profound interconnectedness of our world can a hopeful path through these times be discovered. Pacifica, as ever, is devoted to re-imagining and finding our way through.



—JOSEPH CAMBRAY, PH.D.  
PACIFICA PRESIDENT / CEO



# PACIFICA ALUMNI STORIES: TENDING SOUL IN THE WORLD

“Through Soul, Community Thrives”  
*Per Aninam, Communitas Crescit*

Over the past 45 years, nearly 5,000 graduates have received degrees from Pacifica. A great many have gone on to meaningful and rewarding careers in fields as varied as psychology and medicine, education, writing and the creative arts, community activism, government service, commerce, film and television production, and the law.

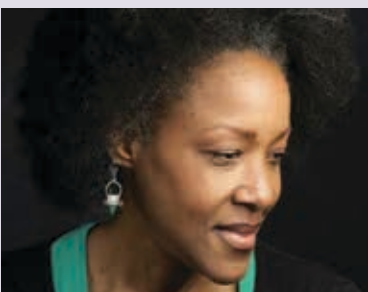
All of them carry forward the intention expressed in Pacifica’s motto—*anima mundi colendae gratia*—for the sake of tending soul in and of the world.

The accomplishments of Pacifica graduates are shown on these pages. More can be found in the descriptions of the Institute’s degree programs on pages 20 to 51.



**WILLIAM JAMES JONES**  
Ph.D. Clinical Psychology

President of the Jones Psychology Group, and Azusa Pacific University faculty. Published “The Lives of Douglass, Du Bois, and Washington: Self-Actualization Among African American Males” in *Journal of Humanistic Psychology*.



**SHARON D. JOHNSON**  
Ph.D. Depth Psychology

Journalist, screenwriter, and a lecturer in Africana Studies at California State University. Currently researching *Sisters of Sakhu: Does Dream Work Affect Black Women’s Mental Well-Being?*



**MAXINE B. LANGDON STARR**  
Ph.D. Depth Psychology

Partner/Owner of Sunflower Therapies and Adjunct Professor of Psychology at Brandman University, motivational speaker on Self-Esteem, Women’s Issues & Team Building. Specializes in children, adolescents & young adults.



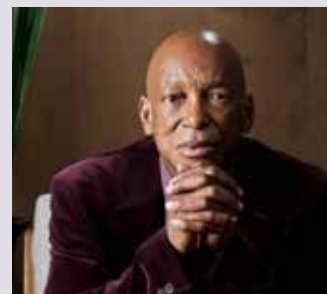
**HOWARD SPECTOR**  
M.A. Counseling Psychology

Founder & CEO of SimplePractice, a practice management & EHR platform for health & wellness professionals. Extensive experience in technology companies and the entertainment industry.



**CORINNE BOURDEAU**  
M.A. Engaged Humanities

“Connecting with myth is such a powerful way of connecting with your passions.” Runs a marketing and production company for films and media dedicated to enriching the human spirit and encouraging social change.



**SIRI SAT NAM SINGH**  
Ph.D. Depth Psychology

A therapist on the Viceland show “The Therapist,” where he assists rap, hip-hop, and rock musicians confronting their troubles on camera. Formerly a dancer and choreographer.



**BRYCE WAY MCDAVITT**  
Ph.D. Clinical Psychology

A licensed clinical psychologist in private practice, specializing in LGBTQ self-esteem and relationships. Assistant Professor of Psychiatry at the University of Southern California.



**MARCELLA DE VEAUX**  
Ph.D. Depth Psychology

Professor of Journalism, a Depth Psychologist, and Liberation Psychologist. She facilitates workshops on diversity-related initiatives, including strategies to eradicate unconscious bias. Associate Director of Faculty Development at OSSI.



**NORLAND TELLEZ**  
Ph.D. Mythological Studies

A writer and visual artist whose background is in film animation. His core artistic and intellectual life centers on the study of the *Popol-Wuh*, the K’iche’ Maya epic of creation.



**BETH ANNE BOARDMAN**  
Ph.D. Mythological Studies

Travels and lectures on the Mythology of Sport, Women and Myth, and the Alchemy of Adolescence. Writer and editor to websites, including pgiaa.org. Registered nurse, grant-writer, student of world dance and music, and joyful mother of two children.



**RACHEL LUGN, STEPHANIE ZAJCHOWSKI, JOANNA GARDNER**  
Ph.D.’s Mythological Studies



The Pacifica Graduate Institute Alumni Association (PGIAA) is an independent, non-profit educational and charitable organization that supports Pacifica alumni and the wider community in developing intellectual, spiritual, altruistic, and professional capabilities.

Through its programs, website at pgiaa.org, and on social media, the Association promotes idea sharing, personal growth, professional development, mentoring, and public service. Scholarships and annual awards recognize alumni accomplishments. Regional coordinators facilitate activities for alumni across the country.

PGIAA works to create positive change by sponsoring events such as fundraisers, environmental projects, educational retreats, community outreach and student mentoring programs.



**Dianne Travis-Teague**  
Pacifica’s Director of Alumni Relations

The Fates and Graces Mythologium is a two-and-a-half day conference and retreat where scholars of mythology gather to share their work and spark inspiration through panels, presentations, and social gatherings. Think Plato’s symposium meets mythological studies. A gymnasium for the mythic mind. Three Pacifica mythological studies alumnae—from left: Rachel Lugn, Stephanie Zajchowski, and Joanna Gardner—founded this conference to cultivate and care for the community of mythologists.



# A PERSONALIZED, INNOVATIVE EDUCATION

Life wants not only  
the clear but also  
the muddy, not  
only the bright but  
also the dark; it  
wants all days to be  
followed by nights,  
and wisdom herself  
to celebrate her  
carnivals.

~C.G. JUNG

## PACIFICA'S UNIQUE APPROACH TO GRADUATE EDUCATION

### A TRANSFORMATIONAL EXPERIENCE

Pacifica students often reflect on their time here as a profound transformational journey. They share their enthusiasm for an experiential education of the mind, heart, and soul.

### A DIVERSE COMMUNITY

Students come to Pacifica from across the country, and sometimes around the world. Most are working adults, from a variety of ethnic, socioeconomic, and age groups.

### THE COHORT MODEL

At Pacifica, students learn in collaborative, close-knit cohort groups that become genuine communities, sustaining the growth of their members. The relationships formed are often lifelong. The cohort becomes a family where one is known, supported, and welcomed.

### AN INTERDISCIPLINARY CURRICULUM

Pacifica's academic programs are interdisciplinary endeavors, drawing on literature, philosophy, mythology, the arts, and critical studies, in order to enliven and deepen the integration of ideas and experience.

### INNOVATIVE ACADEMIC FORMATS

Most of Pacifica's degree programs are held in three- or four-day residential learning sessions once a month. Two degree programs are offered in a blended hybrid low-residency format with only four residential sessions annually. Both configurations allow adult learners to pursue graduate studies while maintaining other commitments at home and work.



**“A Pacifica education places people into relationship with one another.** They learn in community. Working together, they become open to the imaginative process, which sparks a sense of innovation. At Pacifica, students are encouraged to follow their own curiosity. As they are mentored by professors and colleagues, their education becomes individualized and tailored to their particular goals and interests.”

—STEPHEN AIZENSTAT, PH.D.  
CHANCELLOR & FOUNDING PRESIDENT

**The Pacifica faculty has found that those with an affinity for the work done at Pacifica share some significant qualities:**

- A desire to integrate different aspects of their lives
- A tendency to inquire beyond the literal and concrete
- A calling to develop a career that benefits the well-being of others
- An open-hearted curiosity about exploring themselves, their community, and the larger world



# EXCEPTIONAL ACADEMIC RESOURCES

## OPUS ARCHIVES AND RESEARCH CENTER

ON THE CAMPUS OF PACIFICA GRADUATE INSTITUTE

**OPUS Archives and Research Center** is an independent nonprofit organization with facilities on both Pacifica campuses. OPUS preserves, develops, and extends the collections and libraries that have been placed in its care by eminent scholars in the fields of depth psychology, mythology, and the humanities.

Extremely valuable as tools for research, the collections are made available to students and scholars. OPUS also offers scholarships, research grants, educational programs, and hosts community events.

Learn more at [opusarchives.org](https://opusarchives.org)



**OPUS Archives and Research Center** holds personal collections of these scholars:

Joseph Campbell

Marija Gimbutas

James Hillman

Marion Woodman

Christine Downing

Katie Sanford

Jane Hollister

Joseph Wheelwright

Adolf Guggenbühl-Craig

**OPUS** holds the private libraries of Joseph Campbell, Marija Gimbutas, and Marion Woodman.



## GRADUATE RESEARCH LIBRARY

**Pacifica's Graduate Research Library** holds special collections related to each of the Institute's degree programs. With branches on both campuses, the library offers access to 24,000 books, journals, and dissertations, as well as audio, video, and psychological testing materials, 100,000 e-books, and thousands of academic journals.



## PACIFICA BOOKSTORE

**The Pacifica Bookstore**, on Pacifica's Ladera Lane Campus and online, stocks over 5,000 titles, including works by Pacifica faculty and alumni. It also offers clothing, jewelry, and unique objects.

Browse the Pacifica Bookstore [pacificabookstore.com](https://pacificabookstore.com)





# TWO BEAUTIFUL CAMPUSES BETWEEN THE OCEAN AND COASTAL MOUNTAINS NEAR SANTA BARBARA



## NINETY MILES NORTH OF LOS ANGELES

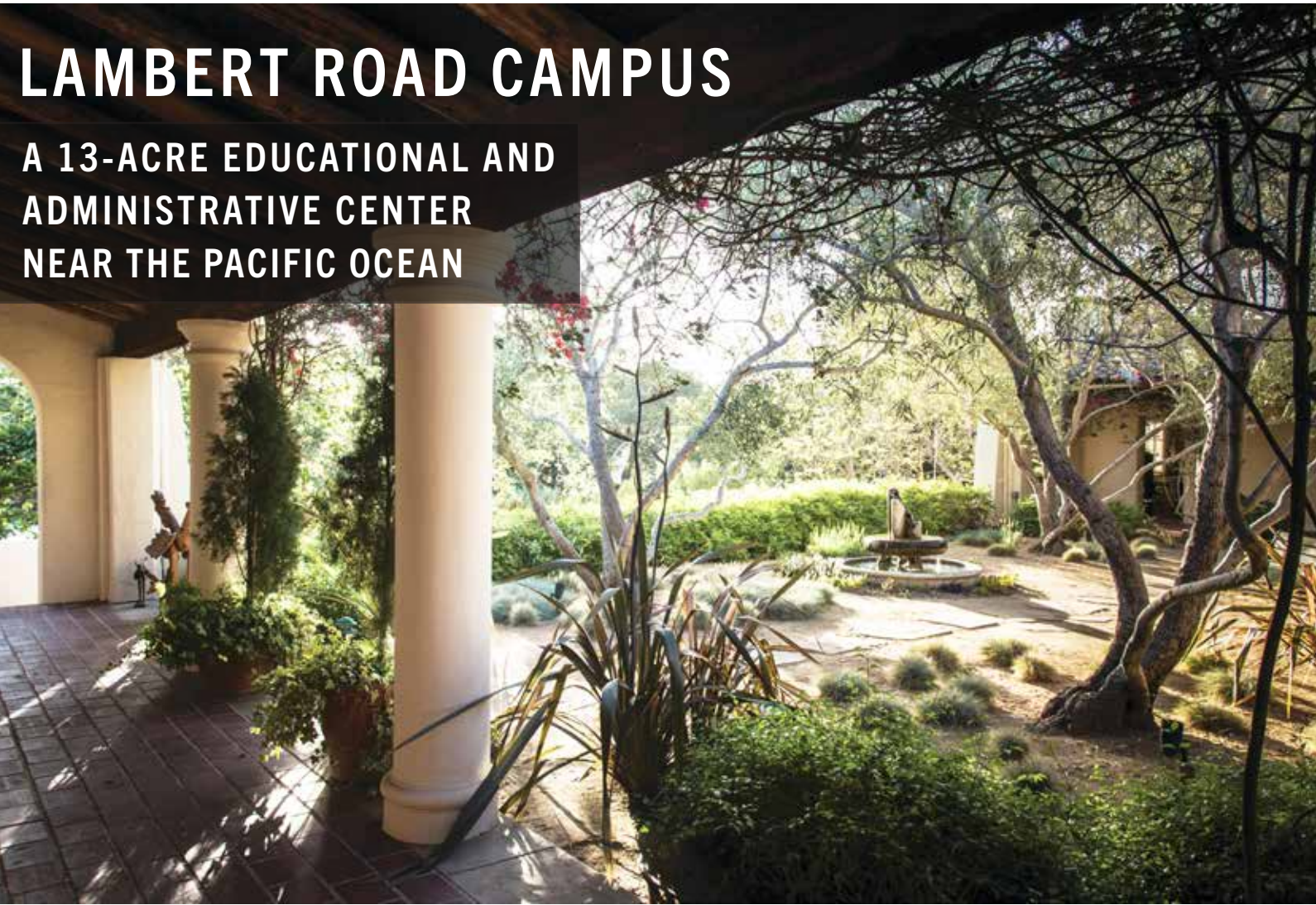
Pacifica's **Lambert Road Campus** is near the ocean just south of Santa Barbara. The **Ladera Lane Campus** sits in the coastal foothills approximately two miles away.

Both **Pacifica Campuses** have been designed and are carefully maintained with special consideration for the beautiful settings they occupy. Landscaping and people paths are arranged in a way that invites the birds, insects, and other animals of the area to make their homes in these places. Gardens and orchards on the properties are cultivated with organic methods, moving Pacifica closer to its goal of environmental sustainability.

The Santa Barbara area has many charms that enrich students' experiences—from the Pacific Ocean with its broad, sandy beaches and the coastal foothills, to the town's Mediterranean architecture and its many cultural, dining, and entertainment offerings.







# LAMBERT ROAD CAMPUS

A 13-ACRE EDUCATIONAL AND ADMINISTRATIVE CENTER NEAR THE PACIFIC OCEAN

Pacifica’s Lambert Road Campus is on the restored and expanded former site of a philanthropist’s 1920’s-era estate. The campus is graciously shaded by large oaks and sycamores, with soulful pathways, and inspiring views of the Pacific Ocean and the Santa Ynez Mountains.

A one-acre organic farm produces fruits, vegetables, herbs, and flowers that are enjoyed by students, faculty, and staff in the dining halls on both campuses.



The Lambert Road Campus houses classrooms, lecture halls, faculty and administrative offices, the Joseph Campbell and Marija Gimbutas Library, and a Graduate Research Library.





# LADERA LANE CAMPUS

A 35-ACRE EDUCATIONAL  
AND RETREAT CENTER IN  
THE COASTAL FOOTHILLS



A short drive from its sister campus on Lambert Road, Pacifica's Ladera Lane Campus is home to a retreat center, classrooms, administrative offices, the Graduate Research Library, and the Pacifica Bookstore. The OPUS Archives and Research Center's rare collections are housed on this campus.



Residential buildings offer lodging for students when classes are in session, and healthful meals are shared in the large communal dining hall. Spacious lawns present views of the Pacific Ocean, Santa Barbara Channel Islands, and surrounding Santa Ynez Mountains. Gardens, fountains, and wooded pathways afford spaces for quiet contemplation and conversation.





# SPECIAL EVENTS AT PACIFICA IN 2019–2020



In addition to the Institute’s graduate degree programs, the Retreat at Pacifica offers residential and online conferences, seminars, workshops, and certificate programs. Like Pacifica’s degree programs, they explore the fields of psychology, the humanities, and mythological studies through the lens of depth psychology. Featuring leading scholars along with leaders in the arts, sciences, business, and the humanities, and Pacifica faculty, these programs provide continuing education credit for mental health professionals, and are offered at reduced admission price to Pacifica students and alumni.

A selection of the 2019–2020 programs scheduled by the Retreat at Pacifica Graduate Institute are shown here.



## IMAGINATION & TECHNOLOGY



**October 25–27, 2019**

We are increasingly living together with artificial intelligence, as the techno-human world becomes ever more hybrid. No longer is creativity

a purely human faculty—it is now partially animated by technology as a live medium. While naming the realities of technologically-produced climate change on the horizon, we are also poised to consciously explore the edge of something entirely new as we stand at the threshold of the unimaginable.

## CERTIFICATE IN APPLIED MYTHOLOGY



**October 28–  
December 13, 2019**  
**Craig Chalquist, Kelly Carlin,  
Kwame Scruggs, Erik Davis,  
and Mary Wood**

This online certificate brings together master teachers with participants eager to enter the magical world of mythology, where deep sources of wisdom can illuminate contemporary turns of life and fate. Drawing on the sacred stories of many times and places, the Certificate invites you to apply what you learn to a variety of life areas, including self-development, love and family life, work and career, spirituality, consciousness, and personal creativity. You will also learn and practice the crafts of storytelling—including the science behind why it’s so effective.

## THE TRAUMA OF EVERYDAY LIFE: PERSPECTIVES FROM BUDDHISM AND PSYCHOTHERAPY



MARK EPSTEIN, MD

**November 5, 2019**

Trauma does not just happen to a few unlucky people, it happens to everyone. Death, illness, and loss eventually impact us all, but even the everyday sufferings of loneliness and fear are difficult to face. Psychotherapists have described the traumas of early life. Buddhism has emphasized the inherent precariousness of impermanence.

But both disciplines agree that trauma is a fact of life. While emotional memory may be forever, trauma seeks a relational home in which it can be metabolized. The way out is through.

## CERTIFICATE IN ECOPSYCHOLOGY



**January 20–  
April 17, 2020**  
**Craig Chalquist, Linda  
Buzzell, and Andy  
Fisher**

Ecopsychology brings ecology and psychology together to create novel and exciting approaches to the urgent needs of our times. Its most visible face is the practice of Ecotherapy, which emphasizes the synergy between human well-being and the health of the planet. In this program, we will also explore Ecopsychology considered as a socially radical project that integrates psychology and ecology by questioning much of the conventional thought and practice currently found in these two arenas.

## EXPLORING THE CONSCIOUS FEMININE: CONTINUING THE LEGACY OF MARION WOODMAN



**February 24–28,  
2020**

Join Marion Woodman Foundation Senior Teachers for a weeklong gathering offering an experiential encounter

with BodySoul dream work, expressive arts, movement, and voice—bringing soul work to life. These five days together will include morning dance, meditation, and dream kivas.

## MAGIC FROM THE MARGINS: WITCHES, WOMEN AND EMERGING ECOLOGIES OF PSYCHE



**June 19–21, 2020**

Witchcraft is a term with a terrifying and contested history while being subject to profound revisioning. It is practiced on the margins by the marginal. It is overlooked in the

sense of being pushed out of officially sanctioned knowing, and also over-looked-at in the sense of being scrutinized too harshly by mainstream authority. Who were the witches when they were the abject, the feared, and disproportionately women? Who are they now when they are often a mode of empowering and extending consciousness from the margins?

For a complete list of the Retreat at Pacifica’s current program offerings, visit [pacifica.edu](http://pacifica.edu) and click on the Retreat at Pacifica tab in the upper right corner, or call 805.969.3626.

Please Note: Programs are subject to change.

## AND IN 2019...



Dr. Jeffrey J. Kripal gave the commencement address at Pacifica’s 2019 Graduation Ceremonies. Dr. Kripal is a leading scholar in the area of comparative religion, and is also a featured presenter in the 2019-2020 Trauma Studies Certificate Program.



# PACIFICA GRADUATE DEGREE PROGRAM AND ACADEMIC FORMAT OVERVIEW



## THE QUESTION OF VOCATION IS CRUCIAL

and choosing the right one requires listening to the voice within. The root of the word “vocation” is Latin for “voice.” Learning to trust that inner voice is an act of courage.

At Pacifica, students span a wide range of ages, and come from a spectrum of diverse backgrounds.

They are all committed—not just to getting an education—but to doing something important that carries real meaning for them.

DEGREE PROGRAM	M.A. Degree	M.A./Ph.D. Degree	Ph.D. Degree	Psy.D. Degree	Preparation for Licensure	Start Date	Campus	3-Day Residential Sessions	4-Day Residential Sessions	Hybrid Online/Low-Residency	Residential Weekend Sessions	Residential Weekday Sessions
M.A. in Counseling Psychology	●				●	Fall	Ladera	Monthly			●	●
Psy.D. in Counseling Psychology				●	●	Fall	Ladera	Monthly			●	
M.A./Ph.D. in Clinical Psychology	●		●		●	Fall	Lambert		Monthly		●	
M.A./Ph.D. in Depth Psychology with Specialization in Jungian and Archetypal Studies		●				Fall & Spring	Ladera		Quarterly	●	Mid-week through the weekend	
M.A./Ph.D. in Depth Psychology with Specialization in Community, Liberation, Indigenous and Eco-Psychologies		●				Fall	Ladera	Monthly				●
Ph.D. in Depth Psychology with Specialization in Integrative Therapy and Healing Practices			●			Fall	Lambert	Monthly			●	
M.A./Ph.D. in Mythological Studies		●				Fall	Lambert	Monthly			●	Summer
M.A. in Engaged Humanities and the Creative Life	●					Fall & Spring	Ladera		Quarterly	●	Mid-week through the weekend	

For six of Pacifica’s degree programs, students come to campus once a month for three- or four-day learning sessions. Between sessions, students continue reading, research, writing, and practicum experiences. The two hybrid low-residency programs allow students to learn in their home environment in online classrooms with residential campus sessions four times a year.

**The M.A. is a Master of Arts Degree.** Depending on the program, it is a two or two-and-a-half year program, and the final project may be a thesis or a creative project.

**The Ph.D. is a Doctor of Philosophy Degree,** requiring two-and-a-half or three years of coursework followed by a dissertation.

**The Psy.D. is a Doctor of Psychology Degree,** requiring three years of coursework and a dissertation, followed by a one-year internship.

Pacifica Graduate Institute is regionally accredited by the Western Association of Schools and Colleges Senior College and University Commission (WSCUC).

For U.S. Department of Education Gainful Employment Information, visit [pacifica.edu/gainfulemployment](http://pacifica.edu/gainfulemployment).



# M.A. IN COUNSELING PSYCHOLOGY

WITH EMPHASIS IN MARRIAGE AND FAMILY THERAPY, PROFESSIONAL CLINICAL COUNSELING, AND DEPTH PSYCHOLOGY



The M.A. Counseling Psychology Program with Emphasis in Depth Psychology is dedicated to offering students unique and evidence-based comprehensive training in the art of marriage, family, and individual psychotherapy and professional clinical counseling with an appreciation for the systemic and immeasurable dimensions of the psyche.

Depth psychology invites a curiosity about the psyche and respect for the diversity and resiliency of the human experience. Interdisciplinary courses in literature, mythology, religion, and culture deepen students’ abilities to link collective systems and archetypal themes to sociopolitical issues in the lives of individuals, families, and communities.

As preparation for professional licensure in Marriage and Family Therapy (LMFT) and Professional Clinical Counseling (LPCC), a rigorous two-and-a-half year academic program emphasizes theoretical understanding and experiential training in clinical skills, inclusive of a supervised practicum traineeship experience. Research studies and thesis writing prepare students to explore and contribute to the tradition of scholarship within the depth psychological tradition to further Pacifica’s dedication to thoughtful and soulful practice.



The California Association of Marriage and Family Therapists honored Pacifica’s Counseling Psychology program with its **2018 Outstanding School or Agency Award**.



MATTHEW BENNETT, PSY.D.  
Program Chair

At its core, the Counseling Psychology Program honors the distinctive call to the service of the individual and collective psyche.



JEMMA ELLIOT, M.A.  
Program Co-Chair

Founded on a deep relational ethic, a commitment to experiential academia, and a focus on the integration of the imaginal, this program prepares future depth psychotherapists for the rigors of professional licensure.

## ACADEMIC FORMAT

Counseling Psychology classes occur in three-day sessions approximately once each month during the fall, winter, and spring quarters. There is a seven-day summer session each of the first two years.

## CURRICULUM OVERVIEW

FIRST YEAR	
<b>Fall</b> Counseling and Psychotherapeutic Theories and Techniques – CP 501, 2.5 Units Introduction to the Theories of the Depth Tradition – CP 534, 2 Units Counseling Skills: Process of Psychotherapy I – CP 515, 3 Units Professional Skills Development I.A. – CP 565, .25 Unit	<b>Spring</b> Clinical Practice III – CP 612, 3 Units Counseling in Substance Use Disorders, Co-occurring Disorders and Behavioral Addictions II – CP 660B, 1.5 Units Marriage, Family, and Relationship Counseling II – CP 602, 3 Units Community Mental Health Counseling II – CP 607B, 1.5 Units Seminar in Directed Research I.C. – CP 650C, .3 Unit Professional Skills Development II.C. – CP 667, .25 Unit
<b>Winter</b> Human Growth and Development – CP 520, 2 Units Geropsychology and Long Term Care – CP 526, 1 Unit Ethics and the Law: Child Abuse Assessment and Treatment – CP 525, 1 Unit Depth Psychology Theory and Practice I: Analytical Psychology – CP 541, 2 Units Counseling Skills: Process of Psychotherapy II – CP 516, 3 Units Professional Skills Development I.B. – CP 566, .25 Unit	<b>Summer</b> Seminar in Directed Research II.A. – CP 651A, .75 Unit Advanced Theories and Techniques: Human Sexuality – CP 522, 1 Unit Psychological Assessment II – CP 630B, 2 Units Depth Psychology Theory and Practice II.B: Imaginal and Archetypal Psychology B – CP 542B, 1 Unit Group Counseling Theories and Techniques II – CP 528, 2 Units Clinical Practice IV – CP 613, 1 Unit Professional Skills Development II.D. – CP 668, .25 Unit
SECOND YEAR	
<b>Fall</b> Clinical Practice I – CP 610, 3 Units Child Psychotherapy – CP 532, 1.5 Units Counseling in Substance Use Disorders, Co-occurring Disorders and Behavioral Addictions I – CP 660A, 3 Units Community Mental Health Counseling I – CP 607A, 3 Units Seminar in Directed Research I.A. – CP 650A, .3 Unit Professional Skills Development II.A. – CP 665, .2 Unit	<b>Spring</b> Psychopathology – CP 502, 4.5 Units Family Systems and Domestic Violence – CP 605, 1.5 Units Depth Psychology Theory and Practice II.A: Imaginal and Archetypal Psychology – CP 542A, 1.5 Units Counseling Skills: Process of Psychotherapy III – CP 517, 3 Units Professional Skills Development I.C. – CP 567, .25 Unit
<b>Summer</b> Multicultural Counseling Theories and Techniques – CP 530, 2.5 Units Professional Orientation: Ethics and the Law – CP 523, 3.5 Units Research in Psychology – CP 620, .75 Unit Group Counseling Theories and Techniques I – CP 527, 1.5 Units Professional Skills Development I.D. – CP 568, .25 Unit	<b>Fall</b> Cultural Psychology – CP 511, 2 Units Career Development I – CP 608A, .75 Unit Psychopharmacology I – CP 670A, 2 Units Seminar in Directed Research II.B. – CP 651B, 1 Unit Depth Psychology Theory and Practice V: Archetypal Symbols and Dynamics in Psychotherapy B – CP 545, 1 Unit Clinical Practice V – CP 614, 1 Unit
	<b>Winter</b> Psychopharmacology II – CP 670B, 2.5 Units Career Development II – CP 608B, 3.75 Units Depth Psychology Theory and Practice VI: Somatic Psychotherapy – CP 546, 1 Unit Seminar in Directed Research II.C. – CP 651C, 1 Unit Group Counseling Theories and Techniques III – CP 529, 1 Unit Clinical Practice VI – CP 615, 1 Unit
	<p>Some courses are conducted online or have online components. This curriculum may vary depending on evolving academic needs.</p> <p>This program meets the licensure requirements for the State of California. The curriculum may not meet all the requirements that other states have for licensure. Each student is responsible for determining and remaining informed of licensure requirements in their state of residence.</p> <p>This degree program is accredited by the Western Association of Schools and Colleges Senior College and University Commission (WSCUC).</p> <p>For gainful employment information, visit <a href="http://pacifica.edu/gainfulemployment">pacifica.edu/gainfulemployment</a>.</p>



# M.A. IN COUNSELING PSYCHOLOGY

WITH EMPHASIS IN MARRIAGE AND FAMILY THERAPY, PROFESSIONAL CLINICAL COUNSELING, AND DEPTH PSYCHOLOGY



Throughout the program, students are engaged in experiential learning and collaborative processes during residential sessions, in online and hybrid courses, and at their second- and third-year practicum sites.

Collaborative learning reflects Pacifica’s team approach to the assessment and treatment of individuals, couples, families, and groups.

## ACHIEVEMENTS OF PACIFICA COUNSELING PSYCHOLOGY STUDENTS AND GRADUATES INCLUDE:

- Excellent pass rates on California state licensing exams
- Publishing theses and articles in a wide range of professional and depth-oriented journals
- Receiving MFT Consortium Grants
- Successful employment by mental health agencies upon completion of degrees
- Continuing education in doctoral programs
- High levels of job satisfaction, enriched growth, and learning in the field

## STUDENTS IN THE M.A. IN COUNSELING PSYCHOLOGY PROGRAM LEARN TO:

- Be proficient in **theoretical orientations** that offer perspective and provide meaning to systemic patterns and human behavior.
- Demonstrate **process and clinical skills**.
- Identify underlying psychological and systemic dynamics of human interaction.
- Determine and implement **effective interventions** and evidence-based treatment plans while demonstrating knowledge of **Family Systems theories**.
- Apply understanding to **case conceptualization** assessment and treatment in clinical practice.
- Enhance client functioning and well-being via **multiculturally sensitive** referrals and collaborative treatment team consultations.
- Understand individual, systemic, community, political, and biologic aspects of diversity and demonstrate knowledge and **respect for diversity**.
- Assess, diagnose, and treat the symptoms and characteristics of **behavioral addictions**, substance use, and dependence.
- Be knowledgeable, understand, and apply evidence-based assessment procedures to client cases and demonstrate awareness of **community mental health** and diversity-related considerations.
- Apply current **legal and ethical standards** and guidelines while working with diverse populations and demonstrate their knowledge and application in scholarly work and **supervised practicum** as they pertain to marriage and family therapy and professional clinical counseling.
- Identify and integrate **systemic depth psychological perspectives** of human interaction and demonstrate competence in the field of marriage and family therapy and professional clinical counseling.
- Demonstrate an evolving capacity to **self-assess** and articulate one’s own strengths.

## ALUMNI OF THIS PROGRAM



**CARL CHAVEZ**  
M.A. Counseling Psychology  
Associate Marriage Family Therapist (AMFT) serving children and families in the foster care system.



**KYRIE CARPENTER**  
M.A. Counseling Psychology  
Tending the soul of the world to help move aging and dementia out of the shadow of our culture through speaking, consulting, writing, and coaching. Author of *Healing Dementia* (2017).



**MINH TRAN**  
M.A. Counseling Psychology  
Clinician III at a nonprofit partner of the Los Angeles County Department of Mental Health that treats low-income individuals, and families of predominantly Latino descent.



**CIUIN DOHERTY**  
M.A. Counseling Psychology  
Associate Marriage and Family Therapist in private practice with emphasis on holistic, mind-body integration, and EMDR.



# PSY.D. IN COUNSELING PSYCHOLOGY

## WITH EMPHASIS IN DEPTH PSYCHOLOGY




psychologists in a variety of applied settings, including private practice, community mental health, substance abuse and dual diagnosis settings, hospital and inpatient settings, the nonprofit and private sectors, and many other professional contexts.

Pacifica trains students toward an integration of broad and general knowledge in applied counseling psychology with research on the unconscious and relational factors that motivate individual and collective behavior. Depth psychology invites a **curiosity about the psyche and respect for the diversity and resiliency of the human experience**. Interdisciplinary courses exploring literature, mythology, religion, and culture deepen students’ abilities to link collective systems and archetypal themes to sociopolitical issues in the lives of individuals, families, and communities. Although broadly psychodynamic in its orientation, the Psy.D. Program offers particular emphasis in **psychotherapeutic training informed by both psychoanalytic and analytic (Jungian) perspectives**.

This program develops psychologists who are skilled in a broad range of clinical work, including psychotherapy, assessment, supervision, and consultation, as well as integrative approaches to health, which are informed by depth psychological perspectives through a psychodynamic lens. As a Psy.D. Program, this degree offering is dedicated to educating future psychologists who prefer to focus on applied practice rather than research, although appreciation for and fluency with the language and methodology of research also informs the program, culminating in a doctoral dissertation which represents a unique individual contribution to the established research literature. The emphasis on applied

Pacifica’s Psy.D. Program in Counseling Psychology offers a uniquely immersive, experiential, and relationally designed doctoral degree in Counseling Psychology designed to prepare graduates for licensure as licensed psychologists. This exciting new program is deeply informed and organized around principles of psychodynamic psychology, and emphasizes psychotherapy practice informed by an appreciation for the importance of the unconscious life in the individual and in communities, as well as an emphasis on the deeply relational quality of human psychology, both as a philosophy of psychotherapeutic intervention and as an organizing principle for the academic program itself. Following a practitioner-scholar model (also called the “Vail model”), this program represents Pacifica’s commitment to grounding the principles of depth psychology in clinical practice within community settings. Its graduates will be prepared to function as licensed

practice is grounded in the program’s clinical training requirements, including progressively advanced supervised experiences in applied settings gained in practicum and pre-doctoral internship.



The process of psychotherapy mirrors the story of the emergence of the individual psyche within the relational field of intersubjective reality: the internal, ineffable, and primal realities of the emerging self become actualized in the presence of relationship. To be seen by others is to become real. As a healing art, psychotherapy must be an emotionally honest and relationally charged act of co-creation.

~ MATTHEW BENNETT, PSY.D., DEPARTMENT CHAIR

## ACADEMIC FORMAT

Counseling Psychology Psy.D. classes occur in three-day sessions (Friday morning through Sunday afternoon) approximately once each month during Fall, Winter, and Spring quarters, with a seven-day Summer session, over a period of three years. Pre-doctoral internship is expected to take place during the fourth year of training in the program, following the completion of coursework, qualifying and comprehensive exam, and significant progress toward dissertation.

## CURRICULUM OVERVIEW

FIRST YEAR	THIRD YEAR
<p><b>Fall</b></p> <p>Professional and Ethical Development Seminar I – PSY 755, 1.00 unit</p> <p>Introduction to Depth Psychology – PSY 819, 2.00 units</p> <p>Clinical Interview – PSY 940, 1.00 unit</p> <p>Jungian Based Psychotherapy – PSY 810, 2.00 units</p> <p>History and Systems – PSY 700, 2.00 units</p> <p><b>Winter</b></p> <p>Professional and Ethical Development Seminar II – PSY 756, 1.00 unit</p> <p>Psychotherapy with Diverse Populations – PSY 845, 2.00 units</p> <p>Gender and Human Sexuality – PSY 901, 1.00 unit</p> <p>Advanced Psychopathology I – PSY 730, 2.00 units</p> <p>Jungian Based Psychotherapy II – PSY 811, 2.00 units</p> <p><b>Spring</b></p> <p>Professional and Ethical Development Seminar III – PSY 757, 1.00 unit</p> <p>Alcohol, Chemical Dependency, and Addictive Behaviors – PSY 900, 2.00 units</p> <p>Community Mental Health, Public Policy, and Depth Psychology – PSY 825, 2.00 units</p> <p>Developmental Psychology I: Childhood through Adolescence – PSY 830, 2.00 units</p> <p><b>Summer</b></p> <p>Research Design and Methodology I – PSY 950, 3.00 units</p> <p>Legal, Ethical, and Professional Practice – PSY 832, 2.00 units</p> <p>Social Foundations of Human Behavior II: Group Processes – PSY 802, 2.00 units</p>	<p><b>Fall</b></p> <p>Advanced Research Methods in Clinical Psychology I – PSY 956, 3.00 units</p> <p>Psychotherapy Practicum Seminar I – PSY 763, 1.00 unit</p> <p>Psychoanalytic Based Psychotherapy III – PSY 715, 2.00 units</p> <p>Evidence Based Best Practices – PSY 913, 2.00 units</p> <p>Dissertation Completion I – PSY 958A, 2.00 units</p> <p><b>Winter</b></p> <p>Violence and Trauma – PSY 834, 3.00 units</p> <p>Psychotherapy Practicum Seminar II – PSY 764, 1.00 unit</p> <p>Psychoanalytic Based Psychotherapy IV – PSY 716, 2.00 units</p> <p>Principles of Clinical Supervision, Consultation, and Community Assessment – PSY 752, 2.00 units</p> <p>Dissertation Completion II – PSY 958B, 2.00 units</p> <p><b>Spring</b></p> <p>Social Foundations of Human Behavior – PSY 800, 3.00 units</p> <p>Psychotherapy Practicum Seminar III – PSY 765, 1.00 unit</p> <p>Advanced Research Methods in Clinical Psychology II – PSY 957, 2.00 units</p> <p>Post-Jungian Based Psychotherapy – PSY 815, 2.00 units</p> <p>Dissertation Completion III – PSY 958C, 2.00 units</p> <p><b>Summer</b></p> <p>Principles of Psychopharmacology – PSY 873, 2.00 units</p> <p>Biological Foundations of Human Behavior – PSY 735, 3.00 units</p> <p>Affective Foundations of Human Behavior – PSY 838, 2.00 units</p> <p>Dissertation Completion IV – PSY 958D, 2.00 units</p>
SECOND YEAR	FOURTH YEAR
<p><b>Fall</b></p> <p>Objective Personality Assessment – PSY 931, 3.00 units</p> <p>Assessment Practicum Seminar I – PSY 759, 1.00 units</p> <p>Psychoanalytic Based Psychotherapy I – PSY 711, 2.00 units</p> <p>Research Design and Methodology II – PSY 951, 2.00 units</p> <p><b>Winter</b></p> <p>Research Design and Methodology III – PSY 952, 3.00 units</p> <p>Assessment Practicum Seminar II – PSY 760, 1.00 unit</p> <p>Advanced Psychopathology II – PSY 731, 2.00 units</p> <p>Psychoanalytic Based Psychotherapy II – PSY 712, 2.00 units</p> <p><b>Spring</b></p> <p>Cognitive and Intellectual Assessment – PSY 930, 3.00 units</p> <p>Assessment Practicum Seminar III – PSY 761, 1.00 unit</p> <p>Projective Personality Assessment – PSY 938, 2.00 units</p> <p>Dissertation Development – PSY 955, 2.00 units</p> <p><b>Summer</b></p> <p>Cognitive Foundations of Human Behavior – PSY 837, 2.00 units</p> <p>Developmental Psychology II: Adulthood through Old Age – PSY 831, 2.00 units</p> <p>Theories of Psychometric Measurement – PSY 933, 3.00 units</p>	<p>Pre-Doctoral Internship</p> <p>Dissertation Completion V – PSY 959A, 3 units</p> <p>Dissertation Completion VI – PSY 959B, 3 units</p> <p>The required fourth year focuses on internship training and dissertation writing. The program meets the licensure requirements for the State of California.</p> <p>The curriculum may not meet all the requirements that other states have for licensure in clinical psychology. Students are encouraged to regularly check the requirements in the state(s) where they may be practicing.</p> <p>The curriculum may vary depending upon changing academic needs.</p> <p>This degree program is accredited by the Western Association of Schools and Colleges Senior College and University Commission (WSCUC). This degree program is not accredited by the American Psychological Association. Visit <a href="http://pacifica.edu/gainfulemployment">pacifica.edu/gainfulemployment</a> for gainful employment information.</p>



# PSY.D. IN COUNSELING PSYCHOLOGY

## WITH EMPHASIS IN DEPTH PSYCHOLOGY

This program prepares students for licensure in clinical psychology.\*

The Psy.D. in Counseling Psychology Program’s intensive residential learning sessions on the Ladera Lane Campus, its class cohort configuration, and the engaging beauty of the surroundings all lend themselves to an experience of scholarly and personal development. Throughout the program, students are engaged in experiential learning and collaborative processes during residential sessions on campus. Collaborative learning reflects Pacifica’s team approach to the assessment and treatment of individuals, couples, families, and groups.

The Psy.D. program is rooted in the culture and academic methodology of Pacifica’s long-standing and thriving MA Counseling Psychology Program. As an academic degree, it bridges the rich history of teaching depth psychology with the contemporary world of applied counseling psychology. This practical integration emphasizes depth psychological perspectives within current areas of psychological studies such as: relational and intersubjective approaches to psychotherapy; attachment and trauma; evidence-based practices; integrative assessment; interpersonal neurobiology and biopsychosocial approaches to integrative health care; community-based practice approaches; and mental health public policy.



\*The program meets the licensure requirements for the State of California. The curriculum may not meet all the requirements that other states have for licensure in clinical psychology. Students are encouraged to regularly check the requirements in the state(s) where they may be practicing.

# THE PSY.D. IN COUNSELING PSYCHOLOGY IS DESIGNED

## TO DEVELOP GRADUATES WHO ARE ABLE TO:

- Develop literacy in the literature and tradition of classical and emerging depth psychology scholarship that is also guided by psychodynamic theory and the humanities.
- Critically explore Jungian scholarship and practice including classical analytical traditions as well as contemporary archetypal and imaginal approaches to psychology and psychotherapy.
- Apply principles of classical and contemporary psychoanalytic theory to the relational process of psychotherapy, including contributions of object relations, self psychology, and intersubjectivity theory
- Be proficient in theoretical orientations that offer perspective and provide meaning to systemic patterns and human behavior.
- Identify underlying psychological and systemic dynamics of human interaction
- Apply understanding to case conceptualization assessment and treatment in clinical practice.
- Enhance client functioning and well-being via multiculturally sensitive referrals and collaborative treatment team consultations.
- Assess, diagnose, and treat the symptoms and characteristics of behavioral addictions, substance use, and dependence.
- Apply evidence based assessment procedures to client cases and demonstrate awareness of community mental health and diversity-related considerations.
- Apply current legal and ethical standards and guidelines while working with diverse populations and demonstrate their knowledge and application in scholarly work and supervised practicum as they pertain to marriage and family therapy and professional clinical counseling.
- Identify and integrate systemic depth psychological perspectives of human interaction and demonstrate competence in the field of professional clinical counseling.
- Demonstrate an evolving capacity to self-assess and articulate one’s own strengths and organizing principles.
- Understand individual, systemic, community, political, and biologic aspects of diversity and demonstrate knowledge and respect for diversity.
- Advanced practicum seminars conducted as case colloquia that engage psychoanalytic, Jungian/ archetypal/ imaginal, and other evidence based approaches to clinical practice.
- Demonstrate an evolving capacity to self-assess and articulate one’s own strengths.



Anything you do from the soulful self will help lighten the burdens of the world. Anything. You have no idea what the smallest word, the tiniest generosity, can cause to be set in motion. Mend the part of the world that is within your reach.

~ CLARISSA PINKOLA ESTÉS

The Psy.D. Program in Counseling Psychology is comprised of three years of coursework, with practicum training occurring concurrently with years two and three, and pre-doctoral internship comprising a fourth year. The dissertation process is projected to span the third year of coursework and the internship year.

YEAR ONE	Course Work		
YEAR TWO	Course Work	Practicum	
YEAR THREE	Course Work	Practicum	Dissertation
YEAR FOUR	Internship (1500 Hours)		Dissertation



# M.A./PH.D. IN CLINICAL PSYCHOLOGY

## WITH EMPHASIS IN DEPTH PSYCHOLOGY



Pacifica Graduate Institute’s Clinical Psychology Program (M.A./Ph.D.) engages students both intellectually and in terms of the relational capacities crucial to clinical practice, inviting them toward a radically transformative relationship with themselves and the world. The program offers training within the paradigms of both the human sciences and natural sciences, including foundational courses in psychology as well as courses that draw on areas such as the humanities, physics (complexity theory), and the arts. The curriculum is designed to lead to licensure as a clinical psychologist, based on educational requirements for psychologists in the State of California.

Inaugurated in 1987, Pacifica’s M.A./Ph.D. Clinical Psychology Program is dedicated to educating scholar-practitioners who integrate theory, research, and clinical practice within human science and depth psychology traditions. The program is committed to social justice as essential to the roles of clinical psychologist as therapist and researcher, as well as citizen.

The program focuses on the theoretical, clinical, and social dimensions of depth psychology and educates students to become scholars in these areas. Found in multiple cultural contexts and perspectives, including the explorations of Freud and Jung, depth psychologies are distinguished by their recognition of a latent or unconscious dimension of psychological life. This unconscious element, or depth in human experience, is understood as essential to the transformative character of the therapeutic relationship as well as engagement in scholarly inquiry.

Inspired by psychoanalytic, Jungian, and existential-phenomenological perspectives in their historical and contemporary formulations, including relational, archetypal, and hermeneutic psychologies, the curriculum incorporates related approaches such as feminism and gender studies,

liberation and decolonial critical theories, and indigenous perspectives and ecological studies. A critical dialogue is maintained with contemporary developments in brain science and postmodern philosophy, along with examination of historical factors that influence the science and practice of psychology.

Clinical instruction emphasizes the importance of the therapeutic relationship, particularly transference and counter-transference dynamics, the significance of dreams, early development including attachment and trauma, developmental stages across the lifespan, individuation as a process of psychic transformation, mind-body integration, therapeutic presence, and the cultural context of healing.

Our strong research curriculum is guided by depth psychology’s understanding of psychological phenomena. Hence, the courses focus on qualitative research methods that affirm the interpretative dimension of description as well as the unconscious dynamic between researcher and what is being researched. Student research encompasses the pursuit of knowledge, personal transformation, and the practice of social engagement.

### ACADEMIC FORMAT

Clinical Psychology M.A./Ph.D. classes occur in four-day sessions (Thursday evening through Sunday afternoon) once each month during fall, winter, and spring. There is also one week-long summer session each year. Between learning sessions, advising, mentoring, study and instruction continue through individual and group mentorship from faculty, web-enhanced learning, and cohort support groups.



When I was a student and later faculty at a large state university, I thought my inner life and my professional life had to be divided. When I found Pacifica, I was delighted to work in a place where we openly integrate depth psychological principles in all aspects of our lives and work. I believe this integration inspires us to be a community of students, faculty, and staff that share a commitment to tending the soul in and of the world.

~ OKSANA YAKUSHKO, PH.D., Department Chair

### CURRICULUM OVERVIEW

#### FIRST YEAR

##### Practicum Seminars

Professional and Ethical Development Seminar I, II, III  
– CL 755, CL 756, CL 757, 1 Unit each

##### Annual Assessment

1st Year Annual Assessment for Program Advancement – CL 758, 0 Units

##### Depth Psychology Clinical and Foundational Practice Courses

Psychoanalytic-Based Psychotherapy I: Developmental Perspectives  
– CP 711, 2 Units  
Jungian-Based Psychotherapy I: Personality Structure and Function  
– CP 810, 2 Units  
History and Systems of Psychology – CP 700, 2 Units  
Psychological Assessment I, II – CP 930, CP 931, 2 Units each  
Legal, Ethical, and Professional Practice – CP 832, 2 Units  
Advanced Psychopathology I – CP 730, 2 Units  
Biological Foundations of Human Behavior – CP 735, 2 Units

##### Human Science Research And Scholarly Inquiry Courses

Research Designs and Methodology I: Qualitative, Quantitative, and Mixed Methods – CP 932, 2 Units  
Research Designs and Methodology II: Qualitative Methods of Analysis  
– CP 933, 2 Units  
Research Designs and Methodology III: Quantitative Design and Statistical Analysis  
– CP 926, 3 Units

##### Social Justice and Social Activism Courses

History of Depth Psychology and the Human Science Traditions  
– CL 819, 2 Units  
Phenomenological Psychology: Theory and Practice – CL 917, 2 Units  
Emergent Clinical and Social Theories in Depth Psychology  
– CP 799, 2 Units

#### SECOND YEAR

##### Practicum Seminars

Supervision Practicum Seminar I, II, III: Assessment and Diagnosis  
– CL 759, CL 760, CL 761, 1 Unit each

##### Depth Psychology Clinical and Foundational Practice Courses

Psychoanalytic-Based Psychotherapy II: Personality and Psychopathology  
– CP 712, 2 Units  
Jungian-Based Psychotherapy II: Affect, Mind, and Psyche  
– CP 811, 2 Units  
Principles of Psychopharmacology – CP 873, 2 Units  
Developmental Psychology through the Lifespan – CP 830, 3 Units  
Alcohol, Chemical Dependency, and Addictive Behaviors – CL 900, 2 Units  
Cognitive Foundations of Human Behavior – CL 837, 2 Units  
Affective Foundations of Human Behavior – CL 838, 2 Units

##### Human Science Research and Scholarly Inquiry Courses

Depth Psychological Designs and Methods I – CL 928, 2 Units  
Theories of Testing and Measurement – CP 934, 2 Units

##### Social Justice and Social Activism Courses

Indigenous Approaches to Psychology – CP 803, 1 unit  
Archetypal Psychology II: Social Basis of Human Experience  
– CP 840, 2 Units

Social Foundations of Human Behavior – CP 800, 2 units  
Emergent Clinical and Social Theories in Depth Psychology  
– CP 799, 2 units

##### Annual Assessment

2nd Year Annual Assessment for Program Advancement – CL 762, 0 Units

##### Qualifying Exam for M.A. in Clinical Psychology

M.A. Qualifying Exam – CP 890, 0 Units

#### THIRD YEAR

##### Practicum Seminars

Psychotherapy Practicum Seminar I, II, III: Effective Psychological Interventions  
– CL 763, CL 764, CL 765, 1 Unit each

##### Annual Assessment

3rd Year Annual Assessment for Program Advancement – CL 766, 0 Units

##### Depth Psychological Clinical and Foundational Practice Courses

Post-Jungian Psychotherapy: Biological, Ecological, and Cultural Systems  
– CP 745, 2 Units  
Theories of Group Psychotherapy – CP 719, 1 unit  
Archetypal Psychology I: Personality, Psychopathology, and Culture  
– CP 814, 2 Units  
Advanced Psychopathology II – CP 731, 2 Units  
Principles of Clinical Supervision and Consultation – CL 752, 1 Unit  
Evidence-Based Best Psychotherapies – CL 912, 2 Units  
Violence and Trauma: Developmental and Social Theories  
– CP 834, 2 Units

##### Research and Scholarly Inquiry Courses

Advanced Clinical Research Approaches and Dissertation Development II  
– CP 962, 2 Units  
Depth Psychological Designs and Methods II – CL 929, 2 Units  
Advanced Clinical Research Approaches and Dissertation Development III  
– CP 963, 2 Units  
Research Designs and Methodology IV: Advanced Qualitative Methods  
– CL 940, 2 Units

##### Social Justice and Social Activism Courses

Gender and Human Sexuality – CP 901, 1 Unit  
Psychotherapy with Diverse Populations – CP 845, 2 Units  
Emergent Clinical and Social Theories in Depth Psychology – CP 799, 2 Units

##### Capstone Projects and Program Requirements

Comprehensive Exam Portfolio – CP 989, 0 Units (Degree Requirement)  
Dissertation Writing – CP 990, 15 Units (Degree Requirement)  
Pre-doctoral Internship (Degree Requirement)  
Personal Psychotherapy – CP 950, 0 Units (Degree Requirement)

The required fourth and fifth years of study focus on internship training and dissertation writing.

Selected Courses have web-enhanced learning components. The curriculum is not intended to meet all the requirements of each state for licensure in clinical psychology. The curriculum may vary depending upon changing academic needs. The required fourth and fifth years of study focus on internship training and dissertation writing.

The curriculum may vary depending upon changing academic needs.

This degree program is accredited by the Western Association of Schools and Colleges Senior College and University Commission (WSCUC). This degree program is not accredited by the American Psychological Association.

Visit [pacifica.edu/gainfulemployment](http://pacifica.edu/gainfulemployment) for gainful employment information.



# M.A./PH.D. IN CLINICAL PSYCHOLOGY

## WITH EMPHASIS IN DEPTH PSYCHOLOGY

This program prepares students for licensure in clinical psychology.\*

The commitment to a human science model of psychology—a significant addition to conventional psychology’s predominantly natural science orientation—emphasizes **human meaning as the fundamental component of psychological life**. This focus on meaning, carried out by way of the program’s qualitative research orientation, yields an in-depth understanding of how things matter for individuals within their life situations, while also acknowledging the cultural and historical character of meaning, human science psychology is deliberately affiliated with the humanities. Accordingly, our curriculum is infused with the study of mythology, history, religion, philosophy, and the arts.

By emphasizing the **importance of scholarship in the education of psychologists**, the program continues depth psychology’s longstanding approach to clinical training. The clinical orientation that infuses our curriculum facilitates the engagement of **theory and research in addressing individual, community, and global concerns**.

Our goal is to prepare students to become constructively engaged in diverse clinical, academic, and community settings as researchers and clinicians who are grounded in depth traditions. The affecting beauty of the campus, an intense residency format, and class cohort configuration all lend themselves to an experience of scholarly and personal development keenly attuned to Pacifica’s mission of “tending soul in and of the world.”



The Ph.D. program includes three years of coursework, followed by a two-year dissertation clock. The internship may be undertaken before, during, or after the dissertation phase (but after all coursework is completed).

YEAR ONE	Course Work		
YEAR TWO	Course Work	Practicum	
YEAR THREE	Course Work	Practicum	Comps
DOCTORAL CANDIDACY			
YEAR FOUR	Dissertation Clock (Two Years)		Internship (1500 Hours)
YEAR FIVE			

\*The program meets the majority of educational requirements for licensure in the State of California. The curriculum may not meet all the requirements that other states have for licensure in clinical psychology. Students are encouraged to regularly check the requirements in the state(s) where they may be practicing.

### KEY FEATURES OF THE M.A./PH.D. PROGRAM INCLUDE:

- A curriculum rooted in classical and emerging depth psychology scholarship that is also guided by the humanities (myth, literature, and religious studies).
- A human science model of research that relies on phenomenological, interpretive, and constructivist approaches.
- Courses on Jungian scholarship and practice that emphasize classical analytical traditions as well as contemporary archetypal and imaginal approaches to psychology and psychotherapy.
- Coursework emphasizing classic and contemporary psychoanalytic scholarship and practice.
- A phenomenological focus that integrates social and critical psychology in order to reflect a deep appreciation of the cultural and historical character of psychological experience.
- A depth psychological approach to research from a hermeneutic interpretive standpoint that takes the unconscious dimensions of research into account.
- The embrace of multicultural and critical perspectives in understanding gender, sexuality, indigenous psychologies, somatic and non-Western perspectives.
- Advanced practicum seminars conducted as case colloquia that engage psychoanalytic, phenomenological, and Jungian/archetypal/imaginal approaches to clinical practice.

I want psychology to have its base in the imagination of people rather than in their statistics and their diagnostics.

~JAMES HILLMAN

### ALUMNI OF THIS PROGRAM



**JANET BRITO**  
Ph.D. Clinical Psychology  
AASECT-certified sex therapist licensed in clinical psychology and social work. Founder of Center for Sexual and Reproductive Health in Honolulu, Hawaii.

**MICHAEL MOLLURA**  
Ph.D. Clinical Psychology

Psychologist in private practice and award-winning composer whose dreamwork pairs dreams with original music to animate and amplify images in order to access healing.



**INDHUSHREE RAJAN**  
Ph.D. Clinical Psychology  
In private practice in Beverly Hills working with sex trafficking survivors, those in the LGBTQ community, people in the entertainment industry, and immigrants from various cultures.

**JASON BUTLER**  
Ph.D. Clinical Psychology

Licensed clinical psychologist on the faculty of the Holistic Counseling Psychology Program at John F. Kennedy University. Author of *Archetypal Psychotherapy* (CRC Press).





# M.A./PH.D. IN DEPTH PSYCHOLOGY

## WITH SPECIALIZATION IN JUNGIAN AND ARCHETYPAL STUDIES (DJA)



The Jungian and Archetypal Studies Specialization (DJA) is for students interested in exploring what Jung called archetypes: universal principles and organizing patterns that pre-condition and animate human experience from the depths of the collective unconscious, a universal dimension of the psyche common to each of us.

The program curriculum enables students to develop a comprehensive understanding of the process of psychological development and transformation that Jung called “individuation,” which leads to the realization of the deeper Self, the greater universal person within us. This was the main focus of Jung’s study of alchemy. Jungian ideas inspired the polytheism of James Hillman’s archetypal psychology. For Hillman, gods and goddesses pervade everything.

By engaging mythopoetically with life, and recognizing the gods and goddesses in all things, one can participate in the process Hillman called “soul-making.”

This rigorous, creative exploration of Jungian and archetypal psychology provides students with a range of theories, skills, and practices they can apply directly to their professional, personal, and creative lives, while addressing the collective challenges and opportunities of our moment in history. For those called to explore the personal and collective psyche, this program of study provides a unique opportunity to engage with, apply, and advance depth psychological theories and practices within the Jungian and archetypal traditions. Building on the work of C.G. Jung and James Hillman, students will consider approaches to the psyche that foster healing, transformation, self-expression, creativity, and the development of consciousness.

The Jungian and Archetypal Studies specialization moves depth psychology from the clinical consulting room out into the wider world.

The faculty is comprised of esteemed international scholars with a broad range of areas of expertise. They introduce students to foundational theoretical constructs in the field while helping them to engage critically and creatively with the course material. The coursework itself is aligned with Jung’s

emphasis on the “ineluctable psychological necessity” of individuation, the process by which one might attain deep self-knowledge, further the development of consciousness, and better understand the unconscious factors shaping human experience.



By stimulating and supporting the scholarship and creative research of students, this program promotes the crucial task of advancing depth psychological ideas

and practices as catalysts for individual and cultural transformation.

~ KEIRON LE GRICE, PH.D., Specialization Chair

## ACADEMIC FORMAT

This transformative and scholarly degree program takes advantage of online technology to allow students to work and learn in their home environments, while also taking part in engaged community sessions on Pacifica’s Ladera Lane Campus. Classes begin online and meet during four-day residential sessions (Thursday, Friday, Saturday, Sunday) once per quarter. During these on-campus sessions, students have access to the Institute’s extensive resources and are able to engage with their classmates and instructors face-to-face, combining lecture, discussion, and experiential and embodied learning. Residential sessions also allow time for exploration and community building.

## CURRICULUM OVERVIEW

### FIRST YEAR

- Introduction to Depth Psychology – DJA 700, 3 Units
- Jungian Psychology: The Individuation Journey – DJA 720, 3 Units
- C.G. Jung in Context – DJA 710, 3 Units
- Dreamwork: Tending the Living Images – DJA 825, 3 Units
- Archetypes: Universal Patterns of the Psyche – DJA 800, 3 Units
- Mythopoetic Imagination: Viewing Film, Art, and Literature from a Jungian Perspective – DJA 805, 3 Units
- Reflective Studies I: Foundations for Research – DJA 920, 3 Units

### SECOND YEAR

- Archetypal Cosmology and Astrological Hermeneutics – DJA 880, 3 Units
- Imaginal Ways of Knowing: Active Imagination, The Red Book, and Psychic Creativity – DJA 820, 3 Units
- Archetypal Psychology – DJA 730, 3 Units
- Depth Psychology and the Mythic Tradition – DJA 815, 3 Units
- Complexes: Jung’s “Royal Road” to the Unconscious – DJA 810, 3 Units
- Psychoanalytic Openings: Evolving Understandings of the Human Personality in Psychoanalysis and Analytical Psychology – DJA 740, 3 Units (TAKE TWO OF THREE)
- Post-Jungian Critiques and Perspectives – DJA 770, 3 Units (TAKE TWO OF THREE)
- Psychological Types – DJA 835, 3 Units
- The Poetic Basis of Mind – DJA 870, 3 Units (TAKE TWO OF THREE)
- Reflective Studies II – DJA 930, 3 Units

### THIRD YEAR

- Technology and Psyche – DJA 882, 3 Units
- Somatic Studies: The Psyche-Soma Connection – DJA 845, 3 Units
- The Alchemy of Transformation – DJA 865, 3 Units
- Depth Psychology and the Sacred: Approaching the Numinous – DJA 850, 3 Units
- Synchronicity and the New Sciences – DJA 855, 3 Units
- Dissertation Development – DJA 950, 3 Units
- Ecopsychology: The Psyche in Nature – DJA 860, 3 Units
- Reflective Studies III – DJA 940, 3 Units

### CONTINUING

- Self-Directed Studies – DJA 970, 3 Units
- Dissertation Writing – DJA 960, 15 Units
- Our Soul’s Code: Depth Psychological Views of Vocation – DJA 910, 3 Units\* Psyche and Eros: The Psychology and Mythology of Relationships – DJA 840, 3 Units\*

\*These courses may replace any of the above and the curriculum may vary depending upon evolving academic needs.

This curriculum may vary depending upon evolving academic needs. The required fourth and fifth years of study focus on reading, research, and dissertation writing.

This degree program is accredited by the Western Association of Schools and Colleges Senior College and University Commission (WSCUC).

Visit [pacifica.edu/gainfulemployment](https://pacifica.edu/gainfulemployment) for gainful employment information.

The big question is whether you are going to be able to say a hearty yes to your adventure.

~JOSEPH CAMPBELL



# M.A./PH.D. IN DEPTH PSYCHOLOGY

## WITH SPECIALIZATION IN JUNGIAN AND ARCHETYPAL STUDIES (DJA)



People who are enrolled in our academic programs with an online component will tell you that **community and intimacy build quickly in this environment**. While you may not “see” your classmates every month, like students in the residential programs, you will “hear” from them weekly. In fact, online learning is particularly conducive to hearing the voices of all students, as it requires participation from everyone; students who normally may be very quiet in a traditional classroom may be more comfortable “speaking” online.

In this hybrid program, more than half of the direct instruction for each course is meeting face-to-face with your classmates. Over those four days per quarter on campus, you will continue online discussions over shared meals, watch films and have social time, attend classes and guest lectures, and work together in pairs and groups.

Community has been at the heart and soul of this specialization from its inception. In 1948, when Jung gave his dedication speech on the occasion of the founding of the C.G. Jung Institute in Zürich, he called for a community of scholars to come together to imagine extensions “without limit” for depth psychology in the world. This specialization aims to be such a community, one where students and faculty come together to support each other in exploring, applying, and advancing Jungian and archetypal studies “without limit” in the world.

As part of every course, students will share their understanding of how the material is relevant to their lives and their vocational callings, with their classmates and instructors serving as sounding boards and tuning forks who will provide support, share resources, and help refine each other’s theories and practices.

### STUDENTS IN THE JUNGIAN AND ARCHETYPAL STUDIES SPECIALIZATION:

- Critically explore a range of topics central to our understanding of the role of the unconscious psyche in human experience, such as healing, myth, dream, film, soul, spirit, ecology, religion, creativity, personal transformation, individuation, the development of consciousness, and more.
- Deepen the capacity for imaginal, symbolic, mythic, critical, theoretical, and archetypal thinking and being in the world.
- Engage with the creative, dynamic unconscious in both its personal and collective dimensions.
- Hone the expression of their unique voice and vision through courses in research, writing, publication, and presentation.
- Study side by side with Jungian scholars and practitioners interested in envisioning new possibilities for extending contemporary thought and practices into the world.
- Read deeply and broadly from *The Collected Works of C.G. Jung*, Jung’s *The Red Book*, and other core texts in the depth psychological tradition.
- Evaluate the limitations and potentials of Jungian and archetypal psychology within contemporary contexts.



### ALUMNI OF THIS PROGRAM

	<p><b>DIANA ARIAS</b> PH. D. Depth Psychology</p> <p>“My dream was to be at Pacifica. It was not only a personal decision, it was my soul—my meaning in life. Pacifica was a calling.”</p>
	<p><b>SKYLER MADISON</b> PH. D. Depth Psychology</p> <p>“Although I initially came here to deepen an existing career, Pacifica helped me find my true calling and pursue it in an authentic way.”</p>
	<p><b>STACEY SHELBY</b> PH. D. Depth Psychology</p> <p>In private practice in clinical depth psychotherapy. A Registered Clinical Counselor in Canada and certified dream tender who teaches workshops and lectures internationally. Author of <i>Tracking the Wild Woman Archetype: A Guide to Becoming a Whole Indivisible Woman</i>.</p>

**The meeting of two personalities is like the contact of two chemical substances. If there is any reaction, both are transformed.**

~C.G. JUNG



# M.A./PH.D. IN DEPTH PSYCHOLOGY

## WITH SPECIALIZATION IN COMMUNITY, LIBERATION, INDIGENOUS, AND ECO-PSYCHOLOGIES (CLIE)



This specialization seeks to address the critical personal, community, cultural, and ecological challenges of our time. Nourished by depth psychology, students become sensitive to the interdependence of individual, cultural, and collective dynamics, and to dialogue, the arts, and the imaginal as catalysts to vision and transformation. Community and ecological fieldwork and research are designed to help students pursue their distinctive areas of interest, gathering the theoretical understanding, fieldwork, and research skills to deepen their engagement in their work.

This degree program specialization is a bold initiative to forge transdisciplinary and transformative approaches to the critical personal, community, cultural, and ecological challenges of our time. Accomplishing this necessitates a radical engagement in re-conceiving psychology as a potentially liberatory and restorative force in society, one engaged in initiatives to promote social, economic, and environmental justice, peace-building, and ecological sustainability. The specialization is committed to rebuilding fragmented cultural and ecological connections, and to co-creating democratic, dialogical, joyful, sustainable, and nonviolent living.

To study community and ecopsychology in the light of liberation and indigenous psychologies commits us to deeply explore and address the profound effects of injustice, violence, and exploitation on psychological, communal, and ecological well-being. The curriculum places multicultural approaches to depth psychological theories and practices in dynamic dialogue with ecopsychology, indigenous psychologies, critical community psychology, and psychologies of liberation from diverse cultural settings. Students gain an understanding of the interdependence of individual, community, cultural, and ecological well-being.

Coursework nurtures creative approaches to collaboration in organizations, nonprofits, community groups, and educational settings. Through community and ecological

fieldwork and research, students are supported in the pursuit of their distinctive areas of interest, and in strengthening their research and practice skills. Students are able to make their own significant contributions to the attainment of a just and sustainable world, in which—as Paulo Freire said— “it is easier to love.”



SUSAN JAMES, PH.D.  
Specialization Co-Chair



MARY WATKINS, PH.D.  
Specialization Co-Chair

Through their scholar-activism our students are growing their visions for a just, sustainable, and peaceful world. Here they gather the theoretical and practical tools for the work of social and environment justice. In the face of ongoing coloniality, they are co-creating alternatives that welcome a pluriverse of needed knowledges and liberatory action.

~ SUSAN JAMES &  
MARY WATKINS

## ACADEMIC FORMAT

Classes for the Community, Liberation, Indigenous, and Eco-Psychologies (CLIE) specialization take place in nine three-day sessions (Monday, Tuesday, Wednesday), approximately once each month during fall, winter, and spring (October to July). In the first and second summers, students complete fieldwork and research in their home communities or other off-campus sites. In the third summer and subsequent year(s), students are involved in writing their dissertations in their home communities.

## CURRICULUM OVERVIEW

### FIRST YEAR

#### Fall

Introduction to Decolonial Depth Psychology – DPC 730, 2 Units  
Introduction to Critical Community Psychology – DPC 700, 2 Units  
Indigenous Psychologies I – DPC 710, 2 Units  
Council Practice – DPC 871, 2/3 Unit

#### Winter

Psychoanalytic Tradition: Social Psychoanalysis – DPC 760, 2 Units  
Psychologies of Liberation – DPC 781, 2 Units  
Ecopsychology I: Earth Democracy – DPC 732, 2 Units  
Critical Community Inquiry – DPC 872, 2/3 Unit

#### Spring

Jungian Psychology – DPC 761, 2 Units  
Foundations for Research in Depth Psychology: Participatory and Qualitative Inquiry – DPC 881, 2 Units  
Theatre of the Oppressed – DPC 873, 1.33 Units  
Community Dreamwork – DPC 874, 1.33 Units

#### Summer

Community/Ecological Fieldwork Practicum – DPC 783, 5 Units

### SECOND YEAR

#### Fall

Archetypal Psychology – DPC 762, 2 Units  
Phenomenology and Communication of Depth Psychological Cultural and Ecological Work – DPC 880, 2 Units  
Depth Psychology of Violence and Its Prevention – DPC 731, 2 Units  
Practicing Decoloniality and Anti-Racism – DPC 925, 2/3 Unit

#### Winter

Hermeneutic and Phenomenological Traditions – DPC 991, 2 Units  
Liberation Studies and Action – DPC 965, 2 Units  
Indigenous Psychologies II – DPC 860, 2 Units  
Restorative Justice – DPC 875, 2/3 Unit

#### Spring

Community Program and Organization Evaluation – DPC 879, 2 Units  
Ecopsychology II: Environmental and Earth Justice – DPC 847, 2 Units  
Special Topics in Liberatory Qualitative Inquiry – DPC 920, 2 Units  
Somatic Approaches to Trauma Healing – DPC 877, 2/3 Unit

#### Summer

Community/Ecological Fieldwork and Research Practicum – DPC 883, 5 Units  
Depth Transformative Practices – DPC 997, 0 Units

### THIRD YEAR

#### Fall

Participatory Research Practicum: Creating an Interpretive Community – DPC 990, 2 Units  
Community Building and Empowerment – DPC 720, 2 Units  
Social Network Analysis – DPC 878, 1 Unit  
Decolonial Philosophy – DPC 925, 1.66 Units

#### Winter

Advocacy and Policy Development – DPC 886, 2 Units  
Psychosocial and Collective Trauma – DPC 923, 2 Units  
Reconciliation and Peacebuilding – DPC 740, 2 Units  
Dissertation Development I – DPC 932A, 2/3 Unit

#### Spring

Critical Topics in Depth Psychology – DPC 963, 2 Units  
Critical Topics in Liberation Psychology – DPC 964, 1 Unit  
Liberatory Pedagogy – DPC 992, 2 Units  
Critical Topics in Environmental Justice – DPC 832, 1 Unit  
Dissertation Development II – DPC 932B, 2/3 Unit  
Critical Topics in Indigenous Psychologies – DPC 861, 1 Unit

#### Summer

Research Writing: Conceiving the Dissertation – DPC 933, 5 Units

### CONTINUING

Dissertation Writing – DPC 980, 15 Units

This curriculum may vary depending upon evolving academic needs. The required fourth and fifth years of study focus on reading, research, and dissertation writing.

This degree program is accredited by the Western Association of Schools and Colleges Senior College and University Commission (WSCUC).

Visit [pacifica.edu/gainfulemployment](https://pacifica.edu/gainfulemployment) for gainful employment information.



# M.A./PH.D. IN DEPTH PSYCHOLOGY

## WITH SPECIALIZATION IN COMMUNITY, LIBERATION, INDIGENOUS, AND ECO-PSYCHOLOGIES (CLIE)

This specialization is the only graduate program in the U.S. that focuses on liberation psychology, and the only one that places critical community psychology, indigenous psychologies, and ecopsychology into dynamic conversation with one another. In community and ecopsychological fieldwork, students act as bridges between the knowledge developed by ecological and cultural workers and each area of specialization.

Students apply learning to leadership positions in a wide variety of professions:

- Health services (including hospice)
- Youth, secondary, adult, college and alternative education
- Organizational development and transformation
- Prison reform and restorative justice initiatives
- Governmental and nongovernmental organizations
- Social and environmental justice, community building and policy development
- Advocacy and grassroots coalitions
- Arts activism
- Trauma healing
- Peace-building and community dialogue
- Planning and evaluation
- Land preservation
- Ecological sustainability
- Local food initiatives
- Philanthropy
- Microlending and economic alternatives

### ALUMNI OF THIS PROGRAM



**HARRY GRAMMER, M.A. Depth Psychology**  
President and Founder of New Earth, a mentor-based arts, educational, and vocational program that empowers youth in the juvenile justice system. Named as a 2018 Obama Foundation Inaugural Fellow.



**ALISA ORDUÑA**  
M.A. Depth Psychology  
Senior Advisor on Homelessness to the Santa Monica, California City Manager



**ELIZABETH DELIGIO**  
Ph.D. Depth Psychology  
President-Elect to the Society for the Study of Peace, Conflict, and Violence, APA DIVISION 48



**AMBER MCZEAL**  
M.A. Depth Psychology  
Founder and Creative Director, Evolution Muse Healing Arts



**RABBI TIRZAH FIRESTONE, PH.D.**  
Trauma and Ancestral Healing Facilitator, author of *Wounds into Wisdom: Healing Intergenerational Jewish Trauma*.



“Culture Contains the Seed of Resistance Which Blossoms into the Flower of Liberation” by Miranda Bergman and O’Brien Thiele. Mural designed and painted in 1984 and completely restored in 2014. Balmy Alley, Mission District, San Francisco, California.

### STUDENTS IN THE COMMUNITY, LIBERATION, INDIGENOUS, AND ECO-PSYCHOLOGIES SPECIALIZATION:

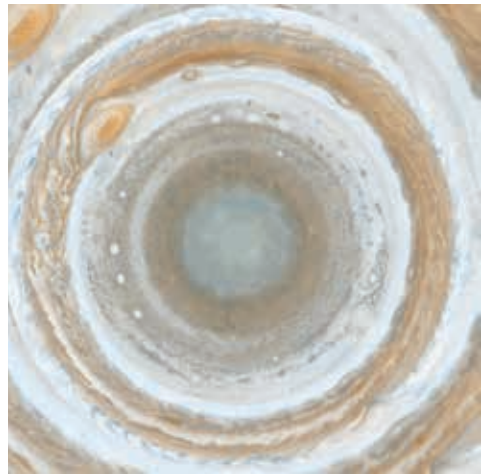
- Deepen insight about individual, group, and cultural life through study of depth psychology
- Develop scholarly and creative writing skills
- Learn innovative and historical approaches to trauma healing, restorative justice, ecological sustainability, community building, economic justice, alternatives to violence and forced migration, peace-building, and reconciliation
- Practice participatory action research and program and organizational evaluation, while deepening ethical discernment of issues of power and privilege
- Train in a wide variety of group approaches to cultural and ecological work
- Heighten sensitivity to the imaginal, the metaphorical, and the mythical
- Develop the capacity to teach in academic and community learning environments

There are a variety of scholarships available for this specialization (see page 58), including Coverdell Fellows Program Scholarships for returned Peace Corps volunteers, Herman Warsh Scholarships, Pacifica Yellow Ribbon Scholarships for veterans, and Pacifica Matching Americorps Scholarship Program.



# PH.D. IN DEPTH PSYCHOLOGY

## WITH SPECIALIZATION IN INTEGRATIVE THERAPY AND HEALING PRACTICES



An innovative doctoral specialization that re-imagines approaches to therapeutic practice, enhances and supports the individuation work of students, and integrates the essential perspectives of depth psychology and applied healing traditions.

Students develop important mentoring relationships with Pacifica’s unique faculty of clinicians, consultants, and scholars that include: Jungian analysts, post-Jungian theorists and therapists, clinical psychologists, indigenous elders, psychiatrists, psychodynamic therapists, systems therapists, humanistic and archetypal psychologists, spiritual counselors, ecotherapists, health and medical professionals, and advanced scholars in research, mythology, consciousness, creativity, complex adaptive systems, and the humanities.

This doctoral specialization cultivates an integrative approach to professional development in the healing arts informed by bridging multidisciplinary frameworks with depth psychological inquiry. **Working with leading faculty, students in this program engage in a journey of personalized education.** The program fosters advanced therapeutic skills and practices that honor the integration of body, mind, spirit, and soul, including alternative and non-linear healing modalities. Individual and group consultations support students in making important and original scholarly contributions to their fields.

We invite you to join a diverse group of academic and practice-oriented professionals who are called to **deepen their therapeutic work** through an integrative study of healing based on the visionary aspects of depth psychology.

Become a part of a learning community that explores the critical connections between psychology, consciousness, spirituality, and healing.

We welcome students with profound curiosity about themselves and the world, and lifelong learners devoted to a **transformative engagement** with the numinous, the psyche, complexity and emergence, artistic intuition, and the natural world.

In three-day residential learning retreats surrounded by the natural landscape of Pacifica’s Lambert campus, students and faculty work together to **integrate essential healing traditions and contemporary research**—drawing from indigenous and ancient practices, ecotherapeutic modalities, multicultural and contemporary perspectives, and emerging science on human experience and consciousness.



As we sit with paradox and uncertainty in our individual and collective lives, it inspires me to be involved in a program that invites deep curiosity as well as interdisciplinary inquiry, diversity, and dialogue. The depth therapy program asks the difficult questions of consciousness while attending to the practical matter of how to address healing and its meaning. The program achieves these goals in tangible ways that are informed by both traditional and current ways of knowing, drawing deeply on the power and relevance of the symbolic. I welcome you to join us in this unique and integrative depth program!

~ JULIET ROHDE-BROWN, PH.D.  
Specialization Chair

## ACADEMIC FORMAT

The residential components of the Ph.D. in Depth Psychology with Specialization in Integrative Therapy and Healing Practices classes take place during three-day sessions (Friday, Saturday, and Sunday) approximately once each month. The web-enhanced learning components occur throughout the program and are amplified during the Summer quarter.

## CURRICULUM OVERVIEW

### FIRST YEAR

#### Fall

- Foundations of Depth Psychology for the Healing Professions – DPT 730, 2 Units
- Jungian Psychology and Contemporary Healing I: Applied Theory and Practice – DPT 761, 2 Units
- Foundations of Scholarly Research and Writing – DPT 784, 2 Units

#### Winter

- Imaginal and Experiential Dimensions of Therapeutic Practice – DPT 962, 2 Units
- Cultural Dimensions of Psychological Life: Engaging Collective Trauma, Cultural Healing, and Social Justice – DPT 830, 2 Units
- Archetypal Psychology: Re-Visioning Approaches to the Psyche – DPT 762, 1.5 Units
- Selected Topics I – DPT 974, 1 Unit

#### Spring

- Dissertation Development I: Imagination, Calling, and Rigor in Doctoral Scholarship – DPT 832, 2 Units
- The Inner Landscape of Dreams and Active Imagination – DPT 780, 1.5 Units
- The Relational Field I: Theoretical Distinctions and Expanded Paradigms – DPT 763, 1.5 Units
- Practice Consultation Groups I – DPT 750, 1.5 Units

#### Summer (online)

- Healing Narratives: Writing Compelling Practice Studies and Client Stories – DPT 785, 2 Units
- Practice Consultation Groups II – DPT 751, 1 Unit

### SECOND YEAR

#### Fall

- Dissertation Development II: Qualitative and Mixed Methods Research – DPT 782, 2 Units
- Interpersonal Neurobiology, Affective Neuroscience, and Depth Psychology – DPT 961, 2 Units
- Practice Consultation Groups III – DPT 850, 1.5 Units
- Psyche, Soma, Cyborg – DPT 732, 2 Units

#### Winter

- Eco-Spirituality and Eco-Therapy – DPT 732, 2 Units
- Depth Approaches to Psychopathology – DPT 760, 2 Units
- Practice Consultation Groups IV – DPT 851, 1 Unit
- Selected Topics II – DPT 992, 1.5 Units

#### Spring

- The Relational Field II: Psychic Pain and the Human Condition – DPT 863, 2 Units
- Psyche and the Sacred: Psychology and Spirituality in Dialogue – DPT 920, 2 Units

- Selected Topics IIA – DPT 990, 1 Unit
- Practice Consultation Groups V – DPT 852, 1.5 Units

#### Summer (online)

- Working with Illness and Death: East-West, Depth, and Indigenous Perspectives on Suffering – DPT 894, 2 Units
- Practice Consultation Groups VI – DPT 950, 1 Unit
- Written Comprehensive Examination – DPT 899, 1 Unit

### THIRD YEAR

#### Fall

- Body, Mind, and Soul in the Healing of Trauma: Somatic, Neurological, and Archetypal Approaches – DPT 975, 2 Units
- Advanced Dissertation Development – DPT 944, 2 Units
- Practice Consultation Groups VII – DPT 951, 1.5 Units

#### Winter

- Jungian Psychology and Contemporary Healing II: Engaging Complexity and Diversity – DPT 861, 2 Units
- Selected Topics III – DPT 993, 2 Units
- Enacting the Oral Tradition: Oral Comprehensive Presentation – DPT 994, 2 Units
- Practice Consultation Groups VIII – DPT 952, 1.5 Units
- Dissertation Writing – DPT 999, 15 Units

### CONTINUING

The program will also feature a series of special seminars and lectures on a range of important practice areas, such as: Addictions, Dream Tending, Family Systems Theories, Organizational and Group Dynamics, Jung and Shamanism, Expressive and Therapeutic Arts, Healing Mythologies, Shadow and Power in the Healing Professions, Joseph Campbell and Mythic Journeys Through the Underworld, Evolution of Jungian Analysis, James Hillman’s Cultural Critique of Psychology, Chinese Healing Arts, Inner Life and Trauma, Jung’s Red Book, Indigenous Healing Traditions, Treating the Soul in the Health and Medical Professions, Yoga Therapy, Therapeutic Vocations and Careers, and other current issues and movements influencing the healing professions.

This curriculum may vary depending upon changing academic needs. Selected courses may have online components. The required two-year dissertation period, following coursework, focuses on scholarly research and writing.

This degree program is accredited by the Western Association of Schools and Colleges Senior College and University Commission (WSCUC).

Visit [pacifica.edu/gainfulemployment](https://pacifica.edu/gainfulemployment) for gainful employment information.



# PH.D. IN DEPTH PSYCHOLOGY

## WITH SPECIALIZATION IN INTEGRATIVE THERAPY AND HEALING PRACTICES

The Ph.D. in Depth Psychology with Specialization in Integrative Therapy and Healing Practices requires Master's-level education and commitment to healing-oriented research and applied work. The program is ideal for diverse practitioners in the following professions, including:

- Psychotherapists and Psychologists
- Marriage and Family Therapists, Social Workers, and Professional Counselors (licensed or pre-licensed)
- Health and Medical Professionals (Nursing, Physicians, Allied Health Providers)
- Jungian Analysts and Psychoanalysts
- Specialized Addiction and Treatment Counselors
- Expressive Arts Therapists
- Spiritual and Pastoral Counselors
- Health and Wellness Practitioners with Advanced Training
- Consciousness Researchers and Educators
- Energy Psychology Researchers and Practitioners
- Other qualified Consultants and Counselors



# STUDENTS IN THE INTEGRATIVE THERAPY AND HEALING PRACTICES SPECIALIZATION:

- Join an advanced doctoral cohort of diverse professionals collaborating and deepening their work with clients and themselves.
- Explore the growing field of depth psychological research and develop perspectives that help address the critical needs of our world.
- Develop a greater capacity to work symbolically with images, dreams, symptoms, complexes, and synchronicity.
- Work towards becoming advanced practitioners, academic educators, supervisors, or scholarly researchers in the field.
- Examine the critical underpinnings of therapeutic processes and the broad range of theoretical approaches to mental, physical, and spiritual well-being.
- Build mentoring relationships with distinguished faculty and experts devoted to supporting students in deepening their practice and their individuation journey.
- Study the works of leading scholars who have bridged psychological, cultural, mythological, historical, and social traditions to advance broader understandings of human experience.
- Develop advanced skills in important practice areas, such as somatic healing, sexuality, dream work, and spirituality.
- Investigate the important connections between the health of an individual or group and the health of their environment and culture through courses that consider ecology, collective trauma, social justice, and cross-cultural dynamics.

The call may have been more like gentle pushings in the stream in which you drifted unknowingly to a particular spot on the bank. Looking back, you sense that fate had a hand in it.

~JAMES HILLMAN

# ALUMNI OF THIS PROGRAM

	<p><b>CRYSTAL RAMIREZ</b> Ph.D., LMFT Depth Psychology</p> <p>Clinical Director of New Beginnings Counseling Center, a nonprofit mental health center providing psychological counseling and support to low-income families and individuals.</p>
<p><b>DOUGLAS THOMAS</b> Ph.D., LCSW Depth Psychology</p> <p>Jungian-based psychotherapist in private practice who presents workshops and talks on LGBTQ issues and dream therapy.</p>	
	<p><b>ANGELA DEVITA</b> Ph.D., LMFT Depth Psychology</p> <p>In private practice in Ventura, California, and a frequent traveler who offers depth-oriented online coaching to expats, business travelers, authors, teachers, and healers worldwide.</p>
<p><b>GINGER SWANSON</b> Ph.D. Depth Psychology</p> <p>Founder of Asarum Retreats, who brings a shamanic history and sensibility to her private hypnotherapy practice and retreat work.</p>	



# M.A./PH.D. IN MYTHOLOGICAL STUDIES

## WITH EMPHASIS IN DEPTH PSYCHOLOGY



As the only doctoral program in the country dedicated to the exploration of human experience through the interdisciplinary and multicultural study of myth, ritual, religion, literature, depth psychology, and art, the Mythological Studies Program cultivates scholarship, self-inquiry, and imagination in those who seek to understand and express the depths of the psyche. The program is richly informed by the pioneering works of Sigmund Freud, C.G. Jung, Marie-Louise von Franz, James Hillman, and the renowned mythologist, Joseph Campbell, who taught that myth has the power to touch our deepest creative energies, and to generate symbolic images that confer significance upon the complexity of modern life and history. Myth thrives on paradox, ambiguity, and the shape-shifting ways that metaphor informs and transforms our lives. Cultivating the mythic imagination leads to self-revelation and a profound and dynamic understanding of cultures—both our own and other’s.

The curriculum is animated by two basic questions: 1) how is this material meaningful in my life and work, and 2) how is it meaningful to the world within which I live?

The sequence of coursework provides a sustained **inquiry into the diverse mythologies of the world**, situating them in the global context of the postmodern world. Throughout the program, students engage in the close reading of classic works of world literature, including Homer’s *Odyssey*, the Greek tragedies, the *Hebrew Bible*, the *Ramayana* and *Mahabharata*, medieval grail legends, and fairy tales. The rituals and contemplative practices of religious traditions are investigated along with mythic and archetypal aspects of modern literature, contemporary events, and popular culture. Several methods of scholarly interpretation are taught with a special emphasis on the hermeneutical approaches of depth psychology.

Students consolidate their learning through a sequence of **special topics courses taught by alumni** who utilize their training in their professional careers as well as by **distinguished faculty members from other Pacifica programs**, including Stephen Aizenstat, Susan Rowland, and Joseph Cambray. A student literary journal provides opportunities for publication. The curriculum is further augmented by an **annual colloquium lecture given by distinguished guest scholars**—such as Robert Segal (University of Aberdeen), Maria Tatar (Harvard University), and Jeffrey Kripal (Rice University)—who address critical issues in the study of myth and contemporary culture. Students are mentored by core faculty throughout their matriculation through course work.

Graduates of the program enrich their personal and professional lives through the transformative power of myth. Alumni utilize their degree in a range of professions such as education, psychology, healthcare, the arts, filmmaking, religion, business, politics, law, and community and environmental affairs.



Myth has the power to touch and exhilarate the deepest creative energies of the psyche, and to generate symbolic images that confer shape and significance upon what often seems

the chaotic anarchy of contemporary life. Engaging those energies in the experience of deep reading, writing, and discussion in the classroom has been the joy of my career as a teacher and writer. To transmit that joy to the next generation, in challenging times of radical change; to tend the soul that animates the world; and to continue the inspired quest for myths to live by—these are the responsibilities that fuel my passionate engagement in the mission of Pacifica.

~ EVANS LANSING SMITH, PH.D., Program Chair

## ACADEMIC FORMAT

The Master of Arts degree is awarded after the first two years of study and successful completion of a comprehensive examination. Students seeking the doctorate degree engage in a third year of coursework that includes a sequence of research courses and the development of a concept paper for the dissertation. The fourth and fifth years of study focus on dissertation writing and research. Continuing supervision is provided for the completion of the dissertation. Mythological Studies classes occur in 3-day sessions (Friday–Sunday) once each month during fall, winter, and spring. There is one five-day summer session each year.

## CURRICULUM OVERVIEW

### FIRST YEAR

#### Fall

- Greek and Roman Mythologies I – MS 505, 2 Units
- Dreams, Visions, Myths – MS 521, 2 Units
- Epic Imagination – MS 604, 2 Units
- Special Topics in Mythological Studies – MS 599a, .5 Unit

#### Winter

- Hindu Traditions – MS 503, 2 Units
- Ritual and the Embodied Imagination – MS 603, 2 Units
- Approaches to the Study of Myth – MS 620, 2 Units
- Special Topics in Mythological Studies – MS 599b, .5 Unit

#### Spring

- Arthurian Romances and the Holy Grail – MS 502, 2 Units
- Jungian Depth Psychology – MS 511, 2 Units
- Myth and Philosophy – MS 515, 2 Units
- Special Topics in Mythological Studies – MS 599c, .5 Unit

#### Summer

- Colloquium – MS 540, 1 Unit
- Mythic Motifs in Cinema – MS 626, 3 Units

### SECOND YEAR

#### Fall

- Personal Myth and Creative Writing – MS 613, 2 Units
- Greek and Roman Mythology II – MS 705, 2 Units
- Buddhist Traditions – MS 605, 2 Units
- Special Topics in Mythological Studies – MS 699a, .5 Unit

#### Winter

- Native Traditions of the Americas – MS 522, 2 Units
- Sex and Gender – MS 609, 2 Units
- Psyche and Nature – MS 615, 2 Units
- Special Topics in Mythological Studies – MS 699b, .5 Unit

#### Spring

- Archetypal Psychology – MS 611, 2 Units
- Comic Books and Modern Mythology – MS 670, 2 Units
- Alchemy and the Hermetic Tradition – MS 616, 2 Units
- Special Topics in Mythological Studies – MS 699c, .5 Unit

#### Summer

- Colloquium – MS 640, 1 Unit
- Myth and the Underworld – MS 619, 3 Units
- Comprehensive Exam – MS 800, 0 Units

### THIRD YEAR

#### Fall

- Methods and Contemporary Issues in Religious Studies – MS 720, 2 Units
- Hebrew and Jewish Mythology – MS 702, 2 Units
- Islamic Traditions – MS 608, 2 Units
- Special Topics in Mythological Studies – MS 799a, .5 Unit

#### Winter

- Cultural Mythologies I – MS 514, 2 Units
- Christian Traditions – MS 703, 2 Units
- Egyptian Mythology – MS 717, 2 Units
- Special Topics in Mythological Studies – MS 799b, .5 Unit

#### Spring

- Evolving God-Images and Postmodernity – MS 711, 2 Units
- Research Strategies for Dissertation Writing – MS 730, 2 Units
- Dissertation Formulation – MS 733, 2 Units
- Special Topics in Mythological Studies – MS 799c, .5 Unit

#### Summer

- Colloquium – MS 740, 1 Unit
- Myths of the Self: Memoir and Autobiography – MS 726, 3 Units

### CONTINUING

- Dissertation Writing\* – MS 900, 15 Units
- Self-Directed Studies – MS 970, 3.5 Units

\*Writing projects for this course take place away from campus.

This curriculum may vary depending upon evolving academic needs.

The required fourth and fifth years of study focus on reading, research, and dissertation writing.

Curriculum subject to change.

This degree program is accredited by the Western Association of Schools and Colleges Senior College and University Commission (WSCUC).

Visit [pacific.edu/gainfulemployment](http://pacific.edu/gainfulemployment) for gainful employment information.



M.A./PH.D. IN MYTHOLOGICAL STUDIES  
WITH EMPHASIS IN DEPTH PSYCHOLOGY

At the cusp of a paradigm shift in which outmoded mechanistic, reductive modes of thinking are being replaced by a more complex, reanimated worldview, the study of myth, story, and fable has an exciting new relevance. The study of myth can help guide us with its storehouse of narratives and images, facilitating our personal and collective transition into a more vibrant reality.

Myth reveals the unconscious narratives of past and present, making the study of myth vitally important to our times. Issues of faith and violence, sexuality and gender, the sacred and the secular, all co-mingle in the history of world religions and literature to comprise the interdisciplinary tapestry that is mythological studies.

Pacifica's degree program in Mythological Studies invites students to understand the mythological, folkloric, and archetypal structures of the stories that play out in many different arenas all around us—culture and the arts, the environment, education, and religion. The Program explores new ways to detect and study the mythic and folkloric motifs revealed in current events, tell stories, and mentor others in the use of storytelling as a tool of cultural transformation and renewal. Drawing inspiration from the works of Joseph Campbell, Sigmund Freud, and C.G. Jung, and guided by internationally recognized scholars, authors, and educators, students craft research projects specific to their interests and concerns.



Story was our ancestors' most sacred possession. They knew what we do not: that without a founding story, you haven't got a nation, a culture, or a civilization. And without a story of your own, you haven't got a life of your own.

—TOM BLUE WOLF  
CREE ELDER AND STORYTELLER

INQUIRY IN THE CURRICULUM IS SUSTAINED  
THROUGH COURSEWORK THAT INVESTIGATES:

- Similarities and differences that may be discerned within and between Hindu and Buddhist traditions in the East, and Abrahamic traditions of Judaism, Christianity, and Islam in the West.
- The relationship between ritual, oral traditions, and indigenous cultures.
- Literature courses focusing on the Arthurian romances, alchemy, epics, mythologies of the underworld, and folklore that begin with the classics of the canon and progress towards contemporary and postmodern re-visionings in literature, film, music, and art history.
- Personal development courses on dreams, visions, and myths; personal mythology and creative writing; evolving God-images in the context of postmodernity; and memoir and autobiography.
- Depth psychological courses devoted to perspectives of C.G. Jung, Joseph Campbell, and James Hillman.
- Research courses on theoretical approaches to the study of myth, myth and philosophy, methods, and contemporary issues in religious studies and dissertation writing.

MYTHOLOGICAL STUDIES CAREER  
APPLICATIONS HAVE INCLUDED:

- |              |                    |                |
|--------------|--------------------|----------------|
| Educator     | Consultant         | Graphic Artist |
| Therapist    | Organizational     | Video Game     |
| Screenwriter | Storyteller        | Producer       |
| Playwright   | Literary and       | Environmental  |
| Novelist     | Film Critic        | Activist       |
| Life Coach   | Performance Artist |                |

ALUMNI OF THIS PROGRAM



MARY LOUNSBURY  
Ph.D. Mythological  
Studies

Founder of  
Mythos-Sphere,  
a multi-  
dimensional  
structure that  
brings people  
together to share in the joy of creative  
expression in community.



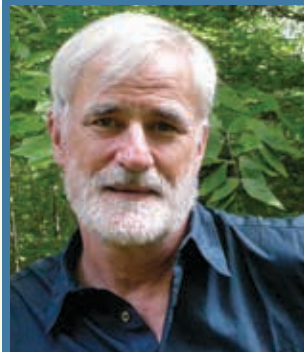
CLARA OROPEZA  
Ph.D. Mythological  
Studies

Professor  
of English  
Composition  
and Literature at  
Santa Barbara  
City College and  
the author of  
*Ana's Nin: A Myth of Her Own.*



KWAME SCRUGGS  
Ph.D. Mythological  
Studies

Founder and  
Director of  
Alchemy, Inc.  
a nonprofit  
organization  
helping urban  
adolescents learn to “become the hero in  
their own story.”



SELDEN EDWARDS  
Ph.D. Mythological  
Studies

English teacher  
and independent  
school  
headmaster, and  
the author of two  
bestselling novels,  
*The Little Book*  
and *The Lost Prince.*



# M.A. IN ENGAGED HUMANITIES AND THE CREATIVE LIFE

## WITH EMPHASIS IN DEPTH PSYCHOLOGY



The Engaged Humanities program is a unique low-residency Masters of Arts program that invites students to discover for themselves—and within themselves—the eternally rich sources of inspiration long-associated with the humanities; including the study of psychology, mythology, philosophy, history, literature, and ecology as they inform the art and craft of living and working with deep purpose and devoted attention and artistry.

Students in this program learn strategies for tapping into the deep well of the collective unconscious as the ultimate source of creativity. In addition, students discover the value and necessity of working together in creative collaboration, which as reflected in the concept of emergence, inspires and influences new, and unexpected creative expression. Students learn to enhance their generativity and aesthetic sensibility through serious and prolonged engagement with the archetypal energies of creativity. We delve deeply into great literature, visual art, film, performance, new media and other modes of expression spanning diverse genres, cultures, and periods of time, including the enduring creativity found in many sciences. Students

completing this Masters of Arts program will present two substantial creative projects and reflect upon their creative processes as they take their experiences out into the world at large.

In today’s rapidly changing world, we are constantly called to yield to a new creative movement—as Joseph Campbell writes—to recreate all fields and invent new forms, structures, designs, and products that address the needs of our era. Campbell says, “we are participating in one of the very greatest leaps of the human spirit,” fueled by the creative impulses manifested by new sciences, technology, the arts, and humanities, and democratized by the internet. Never before has it been so easy to share in the creative process and products of humanity. **The wisdom traditions of the humanities and depth psychology influence the arts and digital media, informing and enriching the creative life.** In fact, the world itself has its own creativity, manifested in the archetypes of the collective unconscious, whose symbols, images, metaphors, and movements are all the *prima materia* for this creative movement.

This M.A. program’s approach is broad, highly interdisciplinary, and satisfying **for those who seek to combine intellectual exploration with creativity.** Honoring Pacifica’s mission to tend soul in and of the world, the program merges art-making and soul-making, supporting students in tending to their souls by tending to their creative lives. **Intellectual rigor is uniquely combined with creative expression,** encouraging dialogue among students and faculty with a focus on expanding individual and collective potential to contribute to the humanities. **The program is**

**designed for those who seek to live and work more creatively, or foster creativity in themselves and others—including anyone in the visual, performing, narrative, studio, and media arts; the creative side of advertising, marketing, and product development; teachers of art, literature, and the humanities; or professionals in fields such as architecture, interior design, fashion, and the film, television, and music industries.** A previous professional creative background is not required for this program.



MARY A. WOOD, PH.D.  
Program Co-Chair

SUSAN ROWLAND, PH.D.  
Program Co-Chair

How can the psychology of the creative unconscious help you find the numinous, offer spiritual inspiration, and deepen your creative instincts? The M.A. in Engaged Humanities and the Creative Life is a unique program designed to develop creativity through a potent combination of the soul of the imagination, humanities resources, and arts practice.

~ SUSAN ROWLAND & MARY A. WOOD

## ACADEMIC FORMAT

This hybrid degree program takes advantage of online distance-learning technology that allows students to work and learn in online classrooms in their home environments. Additionally, once each quarter, students gather on Pacifica’s Ladera Lane Campus for a four-day weekend (Thursday, Friday, Saturday, and Sunday) in a retreat-style residential. During these on-campus sessions, students have access to the Institute’s extensive resources and are able to deepen community involvement and professional collaboration. They join classmates from around the world in forming professional relationships and networks of like-minded creative individuals. This convenient format brings Pacifica’s graduate degree programs to global citizens and the life-long learners who otherwise might not be able to fulfill their educational calling.

The M.A. program in Engaged Humanities and the Creative Life provides an education in the humanities informed by depth psychology, literature, mythology, philosophy and creative practice. The program’s unique learning format combines the best aspects of a connected, heartfelt, interpersonal experience with the convenience of distance-learning technology.

## CURRICULUM OVERVIEW

### FIRST YEAR

- Creativity and Aesthetic Sensibility – HMC 100, 3 Units
- Joseph Campbell and the Mythmaker’s Path – HMC 110, 3 Units
- The Complex Nature of Inspiration – HMC 120, 3 Units
- Creative Influence Across the Humanities – HMC 130, 3 Units
- The Expressive Power of Archetypes – HMC 140, 3 Units
- C.G. Jung, Individuation, and the Symbolic Life – HMC 150, 3 Units
- The Purpose and Power of Image – HMC 160, 3 Units
- Project Workshop I: Creative Dialogue and Design – HMC 170, 3 Units
- The Multicultural, Multimedia, Transformative Fairy Tale – HMC 190, 3 Units



### SECOND YEAR

- Active Imagination, Dreams, and Psychic Creativity – HMC 200, 3 Units
- Mythic Narratives: Eternal Sources and Contemporary Inflections – HMC 210, 3 Units
- Time, Place, Space, and the Ecology of Creative Expression – HMC 220, 3 Units
- The Healing Power of Creativity – HMC 230, 3 Units
- The Artist as Activist and Agent of Social Change – HMC 240, 3 Units OR
- The Purpose and Power of the Moving Image – HMC 3 Units
- Technology and the Psyche – HMC 250, 3 Units
- Creativity, Vocation, and Alchemical Work – HMC 260, 3 Units
- Project Workshop II: Creative Expression and Reflection – HMC 270, 3 Units
- Selected Topics in Engaged Humanities – HMC 280, 3 Units\*

\*This course may replace any of the above, and the curriculum may vary depending upon evolving academic needs.

This degree program is accredited by the Western Association of Schools and Colleges Senior College and University Commission (WSCUC).

For gainful employment information, visit [pacifica.edu/gainfulemployment](http://pacifica.edu/gainfulemployment).

**Your life is much deeper and broader than you conceive it to be. What you are living is but a fractional inkling of what is really within you, what gives you life, breadth, and depth. But you can live in terms of that depth. And you can experience it.**

~JOSEPH CAMPBELL



# M.A. IN ENGAGED HUMANITIES AND THE CREATIVE LIFE

## WITH EMPHASIS IN DEPTH PSYCHOLOGY

### WHY “ENGAGED” HUMANITIES?

How does this adjective reflect and inflect this degree program?

“Engage” is actually a late Middle English term that means “to pledge oneself to do something.” This is no ivory tower program where we sequester ourselves away to look down upon the humanities from a distance. Instead, we promise an engagement with the humanities, and pledge ourselves to offer the fruits of our studies and creative investigations back to the world. This pledge can be summarized in Pacifica’s motto—*anima mundi colendae gratia*—for the sake of tending soul in and of the world. **We engage with the humanities to tend to our souls, and the souls of those around us.** We engage with the humanities to see how soul has been tended by those around the world for millennia, and we pledge to continue to tend the soul of the world.

And how do we do that? We do it through engaging with our creative life, both our personal creative life and the creative life of humanity, as expressed through literature, history, religion, mythology, art, healing practices, etc. **We cultivate our inner life through creative practice facilitated through depth psychology and find the art of living well as well as the living that makes art.** You don’t have to be an artist to join us—this is not an MFA program (though artists are certainly welcome). You do have to be committed to artful living, to **exploring the art of living in full partnership with the creative, dynamic unconscious that lives within and around you.**

In this sense, it could be called Engaged Humanities and the Co-Creative Life, because this program is all about providing students with both an academic and an experiential knowledge of, and engagement with, the creative, dynamic unconscious which seeks expression through them.



And as imagination bodies forth  
The forms of things unknown, the poet’s pen  
Turns them to shapes, and gives to airy nothing  
A local habitation and a name.

~WILLIAM SHAKESPEARE

### ALUMNI OF THIS PROGRAM



**LISA PONDERS**  
M.A. Engaged Humanities  
Fine art painter, lecturer, workshop leader in visual arts and writing, and Jungian-oriented mentor.



**IDA M. COVI**  
M.A. Engaged Humanities  
Founder and Director of a microfund in Haiti providing interest-free microloans to women so they can start small businesses. Previously, she was CEO of Radius Steel, an industrial manufacturer.



**GELAREH KHOIE**  
M.A. Engaged Humanities  
An artist, writer, DJ, impresario and budding Jungian scholar.  
“The Humanities program at PGI is nothing short of a two-year project of transformation. I was one person when I entered,

and a vastly different, and better, person when I left. The growth and learning I experienced were exponential, with each new quarter doubling the ante, leading to more and more insights and awakenings. The scholarship is fierce and beautiful, the environment, sublime. I am now living the cohesively integrated creative and professional life I always dreamed of because of the extraordinary two years I spent in this program.”



# CORE FACULTY

The members of Pacifica’s Core, Adjunct, and Visiting Faculty bring a wealth of knowledge and practical experience to the classroom. They include internationally known authors and lecturers, practicing psychologists and psychotherapists, theologians, and philosophers who share a passion for their vocation and dedication to mentoring students.

### Stephen Aizenstat, Ph.D.



Pacifica’s chancellor and founding president. He is a professor of depth psychology, licensed marriage and family therapist, and a credentialed professor and counselor.

### Avrom Altman, M.A.



Counseling psychology and somatic psychotherapy professor. He is a Licensed Marriage and Family Therapist, licensed professional counselor, and certified Hakomi therapist.

### Matthew Bennett, Psy.D.



Chair of the Counseling Psychology Department. A licensed psychologist, interested in community mental health, personality disorders, and integrative approaches to models of psyche.

### Fanny Brewster, Ph.D.



Core faculty, a Jungian analyst, and writer. Her books include *African Americans and Jungian Psychology: Leaving the Shadows* and *Archetypal Grief: Slavery’s Legacy of Intergenerational Child Loss* (2018).

*animae mundi  
colendae gratia—  
for the sake of  
tending soul in and  
of the world*

### Joseph Cambray, Ph.D.



Pacifica’s president and CEO. He is past-president of the International Association for Analytical Psychology, and has edited a number of academic journals.

### Nuria Ciofalo, Ph.D.



Core faculty in the Community, Liberation, Indigenous, and Eco-psychologies specialization. Interested in indigenous psychologies and action research in partnership with communities.

### Lionel Corbett, M.D.



Professor of depth psychology, who founded a program series that integrates spirituality with depth psychology. Extensive study of spiritual disciplines.

### Jorge De La O, M.A.



Professor in Counseling Psychology Program. Teaches The Art of Listening, Process of Psychotherapy, Law and Ethics, and Multicultural Counseling Theories.

### Christine Downing, Ph.D.



A professor in the Mythological Studies Department, she has made extensive scholarly contributions to the fields of Religious Studies, Mythology, and Gender Studies.

### Michael Elliott, Ph.D.



Professor in Counseling Psychology program, and past president of the Academic Senate. He teaches in the Clinical Psychology program.

### Jemma Elliot, M.A.



Co-Chair of Counseling Psychology. A Licensed Marriage and Family Therapist and Licensed Professional Clinical Counselor, with a focus on the lifelong process of adoption and numinous aspects of trauma.

### Susan James, Ph.D.



Co-chair of Community, Liberation, Indigenous, and Eco-psychologies Specialization. Focuses on understanding cultural ecologies and disseminating social science research findings.

### Rae Johnson, Ph.D.



A somatic movement therapist, educator, and researcher, she is the author of *Elemental Movement, Knowing in our Bones* and *Embodied Social Justice*.

### Patricia Katsky, Ph.D.



Professor at Pacifica for over 15 years. She is a certified Jungian analyst, and has practiced as a psychotherapist for more than 30 years.

### Keiron Le Grice, Ph.D.



Chair of the Jungian and Archetypal Studies specialization. He is the author of four books, including *The Archetypal Cosmos: Rediscovering the Gods in Myth, Science, and Astrology*

### Patrick Mahaffey, Ph.D.



Co-Founder of Pacifica’s Mythological Studies Program and its chair for 18 years. Interested in Hindu and Buddhist traditions, comparative philosophy, and mysticism.

### Kathee Miller, M.A.



A depth psychotherapist who integrates Jungian/ Archetypal psychology, Hakomi Somatic Therapy, self psychology, trauma work, eco-psychology, contemplative practices, and the creative arts.

### Elizabeth Nelson, Ph.D.



Pacifica’s Chair of the Graduate Research Council. Specializes in scholarly writing, research process and dissertation, development. She is a professor of courses on dream, imagery, and cultural studies.

### David Odorisio, Ph.D.



The founding Director of The Retreat at Pacifica. His academic interests focus on the hermeneutic intersections of depth psychology and Religious Studies.

### Avedis Panajian, Ph.D.



Psychoanalyst, researcher, lecturer, and licensed psychologist. He served on the Western Regional Board for Diplomates in Clinical Psychology of the American Board of Professional Psychology.



### Juliet Rohde-Brown, Ph.D.



Chair of Pacifica’s Integrative Therapies and Healing Practices Specialization. Her writings have been published in a number of journals.

### Safron Rossi, Ph.D.



Teaches mythology, archetypal symbolism, and scholarly praxis. For many years she was Curator at Opus Archives, home of the Joseph Campbell, James Hillman, and Marja Gimbutas collections.

### Susan Rowland, Ph.D.



Co-Chair of Pacifica’s Engaged Humanities Program. She has written on Jung, literary theory, and gender, including *C.G. Jung and the Humanities*.

### Michael Sipiora, Ph.D.



Areas of Dr. Sipiora’s teaching and publication include existential-phenomenological psychology and philosophy, archetypal psychology, hermeneutics, classical rhetoric, and narrative theory.

### Glen Slater, Ph.D.



A professor in Pacifica’s Jungian and Archetypal Studies Specialization, and Mythological Studies Program for more than 20 years.

### Evans Lansing Smith, Ph.D.



Chair of Pacifica’s Mythological Studies Program. The author of ten books on comparative literature and mythology. He has taught in Switzerland, Maryland, Texas, and California.

### Mary Watkins, Ph.D.



Co-chair of Community, Liberation, Indigenous, and Eco-psychologies Specialization. She writes at the confluence of depth psychology and liberation psychologies.

### Mary A. Wood, Ph.D.



Co-Chair of Pacifica’s Engaged Humanities program. She is a visual artist, writer, and artist’s mentor. Focuses on Jungian and archetypal approaches to creativity.

### Oksana Yakushko, Ph.D.



Chair of the Clinical Psychology Program with training and interests that span depth psychology, women and gender studies, and psychology. Her clinical research focuses on immigration, human trafficking, and diversity.

### Willow Young, M.A.



A professor at the graduate level for 19 years, who has taught analytical psychology, clinical practice, cross cultural mores and values, and crisis intervention.



# VISITING FACULTY

**Harald Atmanspacher, Ph.D.**  
is an author and physicist. He is a department head at the Institute for Frontier Areas of Psychology and Mental Health in Freiburg, Germany.

**John Beebe, M.D.**  
is a Jungian analyst in practice in San Francisco. He lectures internationally on the theory and applications of analytical psychology.

**Patricia Berry, Ph.D.**  
has been active in the Jungian world for nearly half a century. She is one of the founders of archetypal psychology, and was Pacifica's first Scholar in Residence in 1991.

**Allen Bishop, Ph.D., Emeritus**  
is a licensed psychologist, certified psychoanalyst, and performing concert pianist. He served as chair of Pacifica's Clinical Psychology Program for ten years.

**Christopher Bollas, Ph.D.**  
Is a psychotherapist with a clinical career with autistic and schizophrenic children. Author of *When the Sun Bursts: The Enigma of Schizophrenia*.

**Edward Casey, Ph.D.**  
is Distinguished Professor of Philosophy at SUNY, Stony Brook, where he was chairman of the Philosophy Department for a decade. He works in aesthetics, philosophy of space and time, ethics, perception, and psychoanalytic theory.

**Joseph Coppin, Ph.D., Emeritus**  
has taught at Pacifica since 1996, focusing on archetypal psychology, research, and depth psychotherapy. He chaired the Depth Psychology and Depth Psychotherapy Programs.

**Veronica Goodchild, Ph.D., Emerita**  
has been on the Pacifica faculty for over 15 years. She taught Jungian and imaginal psychology, dreamwork, alchemy, the grail myth, depth psychology and quantum physics, and depth psychology and the sacred.

**Gary Groth-Marnat, Ph.D., Emeritus**  
is an author, lecturer, researcher, and a practicing clinical psychologist and neuropsychologist. He is a leading expert in the field of psychological assessment.

**James Hollis, Ph.D.**  
taught courses in the humanities at various colleges and universities for 26 years before retraining as a Jungian analyst at the Jung Institute in Zurich, Switzerland.



**Geoffrey Jacques, Ph.D.**  
is a poet, essayist, editor, and critic whose writing on literature, the visual arts, and other subjects have appeared in numerous scholarly journals. His work explores poetics, modernist literature, African Americans and the visual arts, and the nuts and bolts of creativity.

**Donald Kalsched, Ph.D.**  
is a Jungian psychoanalyst and clinical psychologist who teaches and leads workshops internationally. His work has explored the interface between contemporary psychoanalytic theory and Jungian theory as it relates to survivors of early childhood trauma.

**Jeffrey Kiehl, Ph.D.**  
is a Jungian analyst who holds a doctorate in atmospheric science and serves as a senior scientist at the National Center of Atmospheric Research in Boulder, Colorado.

**Aaron Kipnis, Ph.D., Emeritus**  
has taught at Pacifica for 17 years. He is a licensed clinical psychologist in private practice, and is recognized as an expert on juvenile justice and gender issues.

**Allen Koehn, D. Min., Emeritus**  
has over 30 years experience as both a Presbyterian minister and a Jungian analyst. His areas of interest include trickster mythology, typology, relationships, alchemy, and the creative process.

**Lynne Layton, Ph.D.**  
is a psychoanalyst and assistant professor of psychology at Harvard Medical School. She has taught courses on gender, popular culture, and culture and psychoanalysis.

**Ginette Paris, Ph.D., Emerita**  
is a psychologist, therapist and the author of many books. She trained as a psychologist in Montréal, Canada, where she was a tenured professor at the University of Québec in Montréal.

**Robert Romanyshyn, Ph.D., Emeritus**  
is an internationally recognized scholar in depth psychology. He has published seven books, contributed 25 chapters in edited volumes, and written numerous journal articles related to the study of depth psychology.

**Helene Shulman Lorenz, Ph.D., Emerita**  
has had a long history as a community activist in the Civil Rights, Anti-War, Farmworkers, Women's, and African and Latin American Solidarity movements.

**Dennis Patrick Slattery, Ph.D., Emeritus**  
helped shape Pacifica's Mythological Studies Program. He has been teaching for 44 years, and achieved the rank of Distinguished Core Faculty at Pacifica Graduate Institute.

**Robert Stolorow, Ph.D.**  
is a psychoanalyst and philosopher who has written and edited many books, and authored or co-authored more than 200 articles.

**Richard Tarnas, Ph.D.**  
is the founding director of the graduate program in Philosophy, Cosmology, and Consciousness at the California Institute of Integral Studies in San Francisco, where he is currently a professor.

**Meg Wilbur, Ph.D.**  
is a Jungian Analyst in private practice. She is a founding member of the C.G. Jung Study Center of Southern California, and was a professor at UCLA's School of Theater, Film, and Television.

**Beverley Zabriskie, MSW**  
is a Jungian Analyst in New York City, where she is a founding member of the Jungian Psychoanalytic Association (JPA). She is an international lecturer, and the author of numerous journal articles and book chapters.

# BOARD OF TRUSTEES

Pacifica is guided by a gifted and hard-working Board of Trustees. They have fiduciary responsibility for the Institute, approving and monitoring the budget, as well as overseeing policy and long-range planning. Their contributions and ongoing involvement are invaluable to the school's growth and wellbeing.

**Thyonne Gordon, Ph.D.**  
**Board Chair**



brings an extensive background in organizational structure and management to Pacifica's Board. She is a business profit strategist, producer, and writer who works with business executives to accelerate their growth.

**Russ Revlin, Ph.D.**  
**Board Vice-Chair**



was an early faculty member in Pacifica's Clinical Psychology Program and is an Emeritus Professor of Psychology at the University of California at Santa Barbara. His research focuses on how adults and children imagine possible worlds.

**Nancy Swift Furlotti, Ph.D.**  
**Corporate Secretary**



is a Jungian Analyst and past president of the C.G. Jung Institute of Los Angeles. She has been published extensively and lectures internationally on Jungian topics, mythology, the environment, and narcissism.

**Kate Hogensen**  
**Trustee**



is a strategic consultant in experiential and retention marketing for Fortune 500 companies across a variety of industries. She also does pro bono work for the International Association of Analytical Psychology and the C.G. Jung Institute of Chicago.

**Frank McMillan**  
**Trustee**



is an award-winning author, educator, and speaker—and the founder of the McMillan Institute for Jungian Studies in Houston, Texas. He currently lectures in Physical and World Geography at Texas A&M University in Corpus Christi.

**Paul Hudson, J.D.**  
**Trustee**



is the founder and managing director of a financial advisory firm that assists nonprofit organizations. He is also an executive coach who conducts seminars and workshops on understanding financial statements and strategic restructuring.

**Thomas Steding, Ph.D.**  
**Trustee**



has been CEO of over ten high-tech companies. He is the founder and chairman of Quadrix Partners, a leadership organization that provides consultation and intervention for creating high execution organizations.

**Stephen Aizenstat, Ph.D.**  
**Ex-Officio Board Member**



is Pacifica's chancellor and founding president. He is a professor of depth psychology, a licensed therapist, and a public school teacher and counselor. His own research has explored the healing potential of dreams for more than 35 years.

**Maren Hansen, M.Div., Ph.D.**  
**Ex-Officio Board Member**



is a founding member of Pacifica Graduate Institute. She teaches in the Counseling Psychology and Humanities Programs, and serves on the Institutional Management Council.

**Joseph Cambray, Ph.D.**  
**Ex-Officio Board Member**



is the president and CEO of Pacifica Graduate Institute. He is also a member of the C. G. Jung Institute of San Francisco's Board of Governors, on the editorial boards of numerous academic journals, and is past-president of the International Association for Analytical Psychology.

# EXECUTIVE ADMINISTRATION

**President and CEO —**  
**Joseph Cambray, Ph.D.**

**Chancellor and**  
**Founding President —**  
**Stephen Aizenstat, Ph.D.**

**Provost —**  
**Peter Rojcewicz, Ph.D.**

**General Counsel —**  
**Franklyn Michaelson**

**CFO/Controller —**  
**Larry Byer**



# APPLICATION AND ADMISSIONS PROCESS

## 1 SUBMIT AN ONLINE APPLICATION

Open your application file by submitting an online application at [pacifica.edu](https://pacifica.edu). You will be asked to provide general information, prior degrees, and pay a \$75 application fee. When the Admissions Office receives this information, an application file will be created and you will be prompted to submit additional documents to complete the admissions process.

## 2 COMPLETE YOUR APPLICATION FILE

### DOCUMENTS REQUIRED TO COMPLETE THE APPLICATION FILE

DEGREE PROGRAM	Personal Statement	Resumé or CV	Academic Writing Sample	Letters of Recommendation	Official Transcripts
M.A. in Counseling Psychology*	Yes	Yes	4-7 page Academic Writing Sample	2 Letters with Recommendation Form	Yes
Psy.D. in Counseling Psychology*	Yes	Yes	8-10 page Academic Writing Sample	3 Letters with Recommendation Form	Yes
M.A./Ph.D. in Clinical Psychology*	Yes	Yes	Minimum 10 page Academic Writing Sample and Additional 1-to-2 pages on your interest in Depth Psychology	3 Letters with Recommendation Form	Yes
M.A./Ph.D. in Depth Psychology with Specialization in Jungian and Archetypal Studies	Yes	Yes	8-10 page Academic Writing Sample	3 Letters with Recommendation Form	Yes
M.A./Ph.D. in Depth Psychology with Specialization in Community, Liberation, Indigenous, and Eco-Psychologies	Yes	Yes	Minimum 10 page Academic Writing Sample	3 Letters with Recommendation Form	Yes
Ph.D. in Depth Psychology with Specialization in Integrative Therapy and Healing Practices	Yes	Yes	8-10 page Academic Writing Sample	3 Letters with Recommendation Form	Yes
M.A./Ph.D. in Mythological Studies	Yes	Yes	8-10 page Academic Writing Sample	3 Letters with Recommendation Form	Yes
M.A. in Engaged Humanities and the Creative Life	Yes	Yes	4-7 page Academic Writing Sample	2 Letters with Recommendation Form	Yes

\*Programs preparing students for licensure also require an Acknowledgement of Licensure Requirements Information Form. Pacifica accepts GRE and TOEFL results, but neither are a required part of the admissions process.

## 3 REVIEW BY ADMISSIONS COMMITTEE

After you have submitted the required application documents, your completed application file will be sent to the Admissions Committee for review and consideration for an interview. Upon recommendation by the committee, you will be invited to interview.

## 4 INTERVIEW

Interviews are a required step in the Pacifica admissions process. The interview addresses a number of important topics concerning the applicant’s potential to engage in graduate studies. They include past educational experience, emotional maturity, personal readiness, and experience related to the applicant’s chosen program of study and future goals.

Applicants to the M.A. in Counseling Psychology Program and the Psy.D. in Counseling Psychology Program are invited to interview in person at the Ladera Lane Campus. Candidates for the Clinical Psychology Programs are invited to interview at the Lambert Road Campus. For all other programs, if you do not live locally, you may be able to interview via phone or video conference.

Notifications of the Admissions Committee’s decision will be sent after the interview.

## 5 ACCEPTANCE

Applicants who have been accepted submit a non-refundable deposit of \$250 and enrollment agreement forms for confirmation. The deposit and forms must be received within 14 days of receipt of acceptance. Those who are unable to attend the current academic year must submit a new application and updated documents in order be considered for acceptance at a later date.

**Pacifica’s Office of Admissions has designated advisors for each degree program who are happy to assist throughout the application and admissions process.**

**The Office of Admissions will notify you each step of the way as application file documents are received, and will keep you advised of upcoming deadlines.**

**Admissions advisors are always available to answer questions and provide information on academic calendars, program start dates, suggested reading lists, and scheduling a campus tour.**

**Email [admissions@pacifica.edu](mailto:admissions@pacifica.edu) or call 805.879.7305.**





# FINANCIAL AID

While financing an education can be challenging, the Financial Aid Office is committed to making this process manageable. The purpose of financial aid is to provide financial assistance to students enrolled on at least a half-time basis (minimum of three units/quarter) in an eligible program at Pacifica Graduate



Institute. Pacifica offers a number of scholarships each year to those applicants who show high financial need and academic merit. Scholarship applications are available by request and on the Financial Aid Office website beginning January 1st. To be considered, all new applicants must be accepted to a program of study, complete the annual Free Application for Federal Student Aid (FAFSA) form using Pacifica’s school code (G31268), and submit the scholarship application and essay by the deadlines. International students, instead of the FAFSA, must complete the International Student Addendum with the scholarship application by the deadline. Refer to the scholarship application for details and instructions.

Some students have been successful in their search for outside scholarships. We recommend internet researching

other sources of educational assistance, including foundations, community organizations, your employer, and state agencies for higher education. Be aware you should not have to pay for a scholarship search. To begin your search, go to [pacifica.edu](http://pacifica.edu) and click on Types of Financial Aid.

At the graduate level, the primary sources of funding are loan programs. Pacifica participates in the U.S. Department of Education’s Federal Direct Loan program. The Direct Loan program provides students with access to federally Unsubsidized Stafford loans as well as Graduate PLUS loans by allowing students to borrow directly from the U.S. Department of Education rather than a private lender.

For more details regarding loan options, visit [www.studentloans.gov](http://www.studentloans.gov).



# PACIFICA SCHOLARSHIPS

## COMMUNITY, LIBERATION, INDIGENOUS, AND ECO-PSYCHOLOGIES PROGRAM MATCHING GRANT:

Offered to newly admitted students in the M.A./Ph.D. Depth Psychology with Specialization in Community, Liberation, Indigenous and Eco-Psychologies program. Pacifica will match (through tuition grant) tuition support offered by an incoming student’s employer, non-profit organization, sponsoring member of the community (not a family member), or foundation. The number and amount of individual awards is contingent upon the number of eligible applications received. Applicants should have experience in and commitment to working in community-based settings or on environmental or cultural issues. The matching funds awarded will be **renewable** throughout a student’s course of study in conjunction with their sponsoring source.

**EDUCATION ASSISTANCE:** Offered to new and returning students based on financial need and strong academic excellence. This scholarship is **not renewable** and students must apply each academic year.

**FOUNDERS SCHOLARSHIP:** Offered to newly admitted students entering the M.A. Counseling Psychology program. The scholarship will be awarded to four students and is **renewable**, provided recipients meet the required grade point average. Applicants should show high financial need and strong academic excellence.

**GLOBAL INNOVATORS SCHOLARSHIP:** Offered to newly admitted students entering into one of the following programs: M.A. in Engaged Humanities and the Creative Life, or M.A./Ph.D. Depth Psychology with Specialization in Jungian and Archetypal Studies. The number and amount of individual awards is contingent upon the number of eligible applications received. This scholarship is **renewable**, provided recipients meet the required grade point average.

**HERMAN WARSH SCHOLARSHIP:** Offered to newly admitted students entering the M.A./Ph.D. in Depth Psychology with Specialization in Community, Liberation, Indigenous and Eco-Psychologies program. The number and amount of individual awards is contingent upon the number of eligible applications received. This scholarship is **renewable**, provided recipients meet the required grade point average.



**JOSEPH CAMPBELL SCHOLARSHIP:** Offered to newly admitted students entering into the M.A./Ph.D. in the Mythological Studies program. The number and amount of individual awards is contingent upon the number of eligible applications received. This scholarship is **renewable**, provided recipients meet the required grade point average.

**C.G. AND EMMA JUNG SCHOLARSHIP:** Offered to newly admitted students entering the Ph.D. Depth Specialization in Integrative Therapy and Healing Practices.

The number and amount of individual awards is contingent upon the number of eligible applications received. This scholarship is **renewable**, provided recipients meet the required grade point average.

**JUNG/FREUD CLINICAL PSYCHOLOGY SCHOLARSHIP:** Offered to newly admitted students entering the Ph.D. Clinical Psychology program. The number and amount of individual awards is contingent upon the number of eligible applications received. This scholarship is **renewable**, provided recipients meet the required grade point average.

**PEACE CORPS PAUL D. COVERDELL FELLOW PROGRAM:** The Peace Corps, in partnership with Pacifica, is pleased to offer the Paul D. Coverdell Fellowship Program to returned Peace Corps volunteers.

**PSY.D. COUNSELING PSYCHOLOGY PROGRAM SCHOLARSHIP:** WASC approved, Department of Education and State of California under review. Watch for future updates and scholarship opportunities.

**POST 9/11 GI BILL–YELLOW RIBBON SCHOLARSHIP:** Yellow Ribbon Scholarships are offered for qualifying Veterans under the Post 9/11 Bill.

**SEGAL AMERICORPS MATCHING SCHOLARSHIP:** Offered to qualified AmeriCorps Alumni enrolled in one of our Master or Doctoral programs. A total of five new scholarships will be available on a first-come, first-served basis.

Students are encouraged to apply for all applicable scholarships. However, scholarships cannot be combined with other Pacifica Graduate Institute Scholarships. Only one scholarship can be awarded per student.



# VISIT PACIFICA ON CAMPUS

The best way to learn more about Pacifica is to attend The Pacifica Experience, a one-day introduction to the Institute's degree programs held on our campuses. These special events are held throughout the year. For a schedule of upcoming one-day introductions and to register online visit [pacifica.edu](http://pacifica.edu).

We cordially invite you visit our campuses at your convenience. For additional information on application and admissions procedures, or to arrange a personal tour, call the Pacifica Admissions Office at 805.879.7305 or email [admissions@pacifica.edu](mailto:admissions@pacifica.edu).

# VISIT PACIFICA ONLINE at [pacifica.edu](http://pacifica.edu)

Read about topics related to depth psychology in Pacifica's Blog, The Pacifica Post

Access Pacifica's Social Media Channels

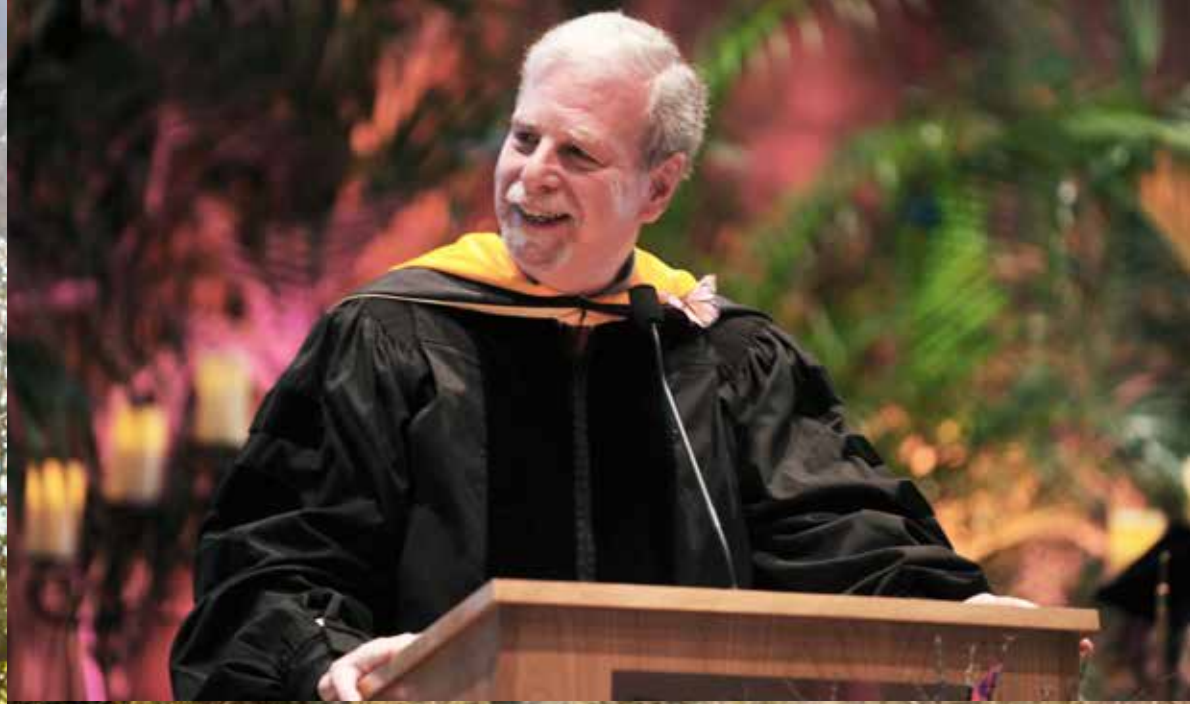
View a schedule of upcoming Retreat Programs

Download Pacifica's current Course Catalog and Financial Aid Guide

Submit an Online Application







ANIMAE  
MUNDI  
COLENDAE  
GRATIA

For the sake  
of tending soul  
in and of  
the world

PACIFICA  
GRADUATE INSTITUTE