

2023-2024
PACIFICA
GUIDE

PACIFICA
GRADUATE INSTITUTE
Santa Barbara, California



WELCOME

We invite you to explore this Guide and learn more about Pacifica Graduate Institute and its master's and doctoral degree programs.

THE PACIFICA GUIDE

Depth Psychological Orientation	2
Pacifica Alumni Stories	4
A Personalized Education	8
Exceptional Academic Resources	10
A Unique Setting	12
The Lambert Road Campus	14
The Ladera Lane Campus	16
Continuing Education	18
Degree Programs Overview	22
M.A. in Counseling Psychology	24
Psy.D. in Counseling Psychology	28
M.A./Ph.D. in Clinical Psychology	32
M.A./Ph.D. in Depth Psychology with Specialization in Jungian and Archetypal Studies	36
M.A./Ph.D. in Depth Psychology with Specialization in Community, Liberation, Indigenous, and Eco-Psychologies	40
Ph.D. in Depth Psychology with Specialization in Integrative Therapy and Healing Practices	44
M.A./Ph.D. in Mythological Studies	48
M.A. in Depth Psychology and Creativity with Emphasis in the Arts and Humanities	52
Faculty and Administration	56
Board of Trustees	58
Application and Admissions Process	60
Scholarships and Financial Aid	62
Student Services and Diversity	64
Why Pacifica Now?	66
Visit Pacifica	68



Tell me, what is it you plan to do
with your one wild and precious life?
~MARY OLIVER

THE PACIFICA STORY

Pacifica Graduate Institute is an innovative, employee-owned graduate school dedicated to the purpose expressed in its motto: *animae mundi colendae gratia*—for the sake of tending soul in and of the world.

Pacifica's genesis was in response to the Vietnam War and cultural upheaval of the 1970s. In the university town of Isla Vista, California, a group of concerned individuals saw returning veterans, families, and young people in distress. They gathered resources and developed a community counseling outreach program to aid those around them.

That community initiative evolved into a graduate program in counseling psychology. What was then known as the Human Potential Movement influenced both the degree program and its founders. Following the push of the times and their own calling, they attended workshops and trainings at the Esalen Institute in Big Sur, California. There they came to know Joseph Campbell, James Hillman, and the work of Marion Woodman. These pioneering thinkers made frequent trips to Santa Barbara and offered support as the school and its programs evolved.

These mentors helped what was then The Human Relations Institute grow into Pacifica Graduate Institute—a respected and accredited graduate school firmly rooted in the traditions of depth psychology.

Today the world is quite different, yet with important parallels. A war in Afghanistan ending in frustration with much soul searching and intense partisan polarization in society. A lingering multiyear pandemic, marked by grief, social unrest, systemic racism, and on-going gender inequalities and sexual harassment. The mental health needs of our world have never been greater.

ACADEMIC EXCELLENCE WITH A DEPTH PSYCHOLOGICAL ORIENTATION



C.G. JUNG

JOSEPH CAMPBELL

PAULO FREIRE

MARION WOODMAN

JAMES HILLMAN

WHAT IS DEPTH PSYCHOLOGY?

Through the study of dreams, images, symptoms (personal and collective), ecological and social justice crises, and meaningful coincidences as well as interpersonal engagements, depth psychologists attempt to understand **the language and the dynamics of unconscious processes** as they manifest in their work with clients, in culture, and in the world.

Depth psychological approaches to psychological suffering attempt to help us become aware of what has been cast out of consciousness, suppressed or not yet able to be known and acknowledged. Healing is associated with allowing what has been repressed, rejected, denied, or ignored to come forward so that we can explore its significance and integrate it, **allowing for a transformation in consciousness for individuals and societies**. After more than a century of psychological exploration of the unconscious, we have increasingly come to recognize that we are all interconnected and our well-being depends on communal wellness.

Evidence for the effectiveness of depth approaches to psychotherapy demonstrates that **depth-informed treatments have a longer-lasting and more profound impact on clients than cognitive or behavioral psychologies alone**.

Depth Psychology also attends to the way unconscious processes express themselves in society and culture, and reciprocally how culture shapes expressions of the psyche. **Depth psychological studies include developing psychotherapy skills as well as researching community, cultural, and ecological issues**. Pacifica students and graduates help the field evolve through their scholarship, creative work, and actions in the world.

EXPANDING ON A DYNAMIC TRADITION

The tradition of depth psychology is rooted in ancient and indigenous forms of knowledge and communication, as exemplified by storytellers, dramatists, and philosophers—those individuals from all walks of life who sought to record the workings of the human imagination. From their work we learned that **the multiple dimensions of psychic reality are revealed in the art and literature of different cultures, as well as in the maladies of individuals and communities**.

The modern academic and practical field of depth psychology originated with the work of **C.G. Jung and Sigmund Freud** in the early 20th century. They highlighted the importance of what lies below the level of conscious awareness, and they pioneered methods of association, amplification, and active imagination in order to explore it. Their work was advanced and expanded upon by original thinkers of the next generation such as Joseph Campbell, Marion Woodman, Paulo Freire, and James Hillman.

LETTER FROM THE PRESIDENT AND CEO

Welcome, and thank you for choosing Pacifica Graduate Institute for your graduate studies. At Pacifica, we honor our past, celebrate our present, and prepare for the future.

In honoring our past, we remain committed to living our motto of tending the soul of and in the world and offering distinctive graduate degrees rooted in the traditions of depth psychology and mythological studies through Jungian practice.

We celebrate what is exceptional about the Institute today — our educational environment, distinguished by dedicated staff and faculty and transformative learning experiences that foster a spirit of free and open inquiry.

We take bold actions for a future where transformed learners imagine, innovate, and impact their homes, communities, and the world.

Originating as a center to serve the mental health needs of Santa Barbara County residents, the Institute has always been rooted in the mission of tending the soul. Almost 50 years later, our mission is as strong as ever to foster creative learning and research in the fields of psychology and mythological studies framed in the traditions of depth psychology.

Today, our eight transformative graduate degrees and certificate programs integrate diverse perspectives on the human psyche and multiple evidence-based understandings of the complexity of our world to enrich soul-centered knowledge through transformative learning experiences and disciplined practice. Our world-renowned faculty, administrators, and staff, and the unique settings of our two campuses, nourish respect for cultural diversity and individual differences. We have over 5,000 active alumni who serve in a variety of capacities, including but not limited to therapists, counselors, psychologists, artists, community leaders, and entrepreneurs.

Our increasingly complex, rapid, and uncertain world needs more Pacifica graduates now than ever, and we are delighted that you have decided to pursue your educational journey with us. As you read this guidebook, you will find a rich array of degree and professional development programs to plan your transformative educational experience. We welcome your leadership, scholarship, service, creativity, and impact in tending the soul of and in the world.

Your unwavering partner in collective transformation,

Dr. Leonie H. Mattison, Ed.D.
President & CEO, Pacifica Graduate Institute



LEONIE H. MATTISON, ED.D.
PACIFICA PRESIDENT / CEO

PACIFICA ALUMNI STORIES: TENDING SOUL IN THE WORLD

“Through Soul, Community Thrives”
Per Animam, Communitas Crescit

Over the past 45 years, nearly 5,000 graduates have received degrees from Pacifica. A great many have gone on to meaningful and rewarding careers in fields as varied as psychology and medicine, education, writing and the creative arts, community activism, government service, commerce, film and television production, and the law.

All of them carry forward the intention expressed in Pacifica’s motto—*anima mundi colendae gratia*—for the sake of tending soul in and of the world.

The accomplishments of Pacifica graduates are shown on these pages. More can be found in the descriptions of the Institute’s degree programs.



KELLY CARLIN
M.A. Depth Psychology
with Specialization in
Jungian Psychology
and Archetypal
Studies

Created Women on the Verge, a year-long coaching program where accomplished women find something deeper, wider, and more meaningful in the next chapter of their lives. She also has a podcast, “Waking from the American Dream.”



JUANA OCHOA
M.A. Depth Psychology
with Specialization in
Community, Liberation,
Indigenous, and Eco-
Psychologies

Grew up in the Pico-Gardens housing project in Los Angeles, a first-generation Mexican American. Eager to peel back multi-generational layers of pain, fear, neglect, and abuse, Ms. Ochoa earned an undergraduate degree in psychology and today is a Ph.D. candidate.



AAQILAH ISLAM
M.A. Depth Psychology
with Specialization in
Community, Liberation,
Indigenous, and Eco-
Psychologies

Teaches pro-bono in the Prison University Project at San Quentin Prison, which strives “to provide excellent higher education programs to incarcerated people to create a replicable model for such programs; and to stimulate public awareness about criminal justice in California.” Currently pursuing her Ph.D. at Pacifica.



JOHN BUCHER
Ph.D. in Mythological
Studies with Emphasis
in Depth Psychology

Consults as a writer, strategist, and communicator based out of Hollywood, California. He is the author of six books, including the best-selling *Storytelling for Virtual Reality*, named by BookAuthority as one of the best storytelling books of all time.



NELY GALÁN
Ph.D. Clinical Psychology

Immigrated to the U.S., became a self-made media mogul, and the first Latina president of Telemundo. Her *New York Times* bestselling book, *SELF MADE: Becoming Empowered, Self-Reliant, and Rich in Every Way*, aims to unite all women on a quest for an economic future they control.



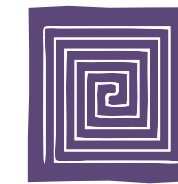
NORLAND TELLEZ
Ph.D. Mythological Studies

Teaches and writes about art, with a background in film animation. His core artistic and intellectual life centers on the study of the *Popol-Wuh*, the K’iche’ Maya epic of creation.



BETH ANNE BOARDMAN
Ph.D. Mythological Studies

Travels and lectures on the Mythology of Sport, Women and Myth, and the Alchemy of Adolescence. Writer and editor to websites, including pgiaa.org. Author of *Songs from the Depths*, a book of poetry with an introduction by Dennis Patrick Slattery.



**ALUMNI
ASSOCIATION**

PACIFICA GRADUATE INSTITUTE

Pacifica Graduate Institute Alumni Association (PGIAA) is an independent, non-profit educational and charitable organization that supports Pacifica alumni and the wider community

in developing intellectual, spiritual, altruistic, and professional capabilities.

Through annual scholarships and awards recognizing alumni accomplishments, and through its programs, website, and social media presence, PGIAA’s Board of Directors are creating positive change in the world.

PGIAA is dedicated to idea sharing, personal growth, professional development, mentoring, and public service.



Dianne Travis-Teague
Pacifica’s Senior Director of Alumni Relations



STEPHANIE ZAJCHOWSKI, JOANNA GARDNER
Ph.D. Mythological Studies

The Fates and Graces Mythologium is a conference and retreat for mythologists and mythophiles led by Pacifica alumnae Joanna Gardner and Stephanie Zajchowski. Scholars of mythology present their work and spark inspiration through panels, presentations, and social gatherings. Think Plato’s symposium meets mythological studies. A gymnasium for the mythic mind.

YOU DO NOT NEED TO STRUGGLE ALONE . . .

Our world is challenged these days: Covid-19 Pandemic, Racial Strife, and Natural Disaster. Please know that YOU ARE NOT ALONE – PGIAA is here for you.

Do not hesitate to call us!

pgiaa.org/pgiaa-voices-through-the-crisis

PGIAA CARELINE

When a crisis arises, we need one another.
PGIAA maintains a CARELINE just in case you need to talk.

Call us at 805.679.6163



ALUMNI IN ACTION



KWAME SCRUGGS

Ph.D. Mythological Studies

Kwame is the founder and director of Alchemy, Inc., a non-profit organization in Akron, Ohio, established in 2003. To date, Alchemy has served nearly 2,000 urban adolescents from Akron and surrounding communities. The organization has received numerous national and regional awards and accolades, including the nation's highest honor for youth-serving programs, the National Arts and Humanities Youth Program Award (2012). This award was handed to Kwame at the White House by the First Lady, Michelle Obama. In 2020, the Association of Teaching Artists (with Lincoln Center Education) announced that Kwame was the winner of their Innovation in Teaching Artistry award. The profound impact of Alchemy's programs was also documented in the national film, *Finding the Gold Within*. Alchemy's mission is "to cultivate urban adolescent males to develop a sense of purpose in life and to thrive as members of a family, school, and community." Of Pacifica, Kwame has said, "Having a degree from Pacifica provided me with instant credibility. However, what it really provided was an example of how I 'walked my talk' and followed my bliss, which in turn, allowed the youth of Alchemy to use me as a model for dreams coming true."



INDHUSHREE RAJAN

Ph.D. Clinical Psychology

For the past 13 years, Dr. Rajan has been doing research and clinical work with sex trafficking survivors in California and India. In 2008, Dr. Rajan founded Project Satori and has since been working to realize its mission to provide comprehensive mental

health care to survivors of human trafficking and their families worldwide; to promote education and advocacy around the global sex trafficking crisis, and to offer training services about sex trafficking prevention and treatment in California, and through global partner programs worldwide.

"At Pacifica I was encouraged to embrace my authenticity and allow it to illuminate my path forward. I finally came home to myself. From this space of Soul, I was fully empowered to connect with my life purpose, and move forward in service to it." -Indhushree Rajan

SATYA DOYLE BYOCK

M.A. Counseling Psychology

Satya is the founder and director of The Salome Institute of Jungian Studies, a small institute with accessible, online seminars and salons focused on "socially relevant psychology." The Salome Institute focuses seminars on ways Jung's psychology can support us to heal from various social ills, including patriarchy, racism, and the loss of empathy and connection. Satya is also a psychotherapist in private practice focusing on Jung's "first half of life" with quarterlife clients, and a writer finishing a manuscript. Her book *Quarterlife: The Search for Self in Early Adulthood* was published by Random House in 2021.

"Attending Pacifica helped me believe that another world is possible, and gave me the tools and degree I needed to help create that other world." -Satya Doyle Byock



DEVON DEIMLER

Ph.D. Mythological Studies

Devon Deimler is an artist, writer, and mythologist. She is Curatorial Assistant at OPUS Archives and Research Center—home to the collections of James Hillman, Joseph Campbell, and Marion Woodman, among others—and is Scholar in Residence, Special

Editions Editor, and Founder/Curator of the Cinemyth Film Series at the Philosophical Research Society in Los Angeles. She earned her doctorate in Mythological Studies with an Emphasis in Depth Psychology from Pacifica Graduate Institute with her dissertation, "Ultraviolet Concrete: Dionysos and the Ecstatic Play of Aesthetic Experience," which received the institute's Dissertation of Excellence award. Devon earned her BA in Interdisciplinary Sculpture from the Maryland Institute College of Art, where she focused on event-based work and modern through contemporary art and film history. Her professional experience in art and music includes founding an independent record label and collaborative event project, *Wildfire Wildfire Productions*, working as Assistant to the Director at the Dennis Hopper Art Trust, and teaching photography and modern art history.



HARRY GRAMMER Ph.D. Depth Psychology with Specialization in Community, Liberation, Indigenous, and Eco-Psychologies

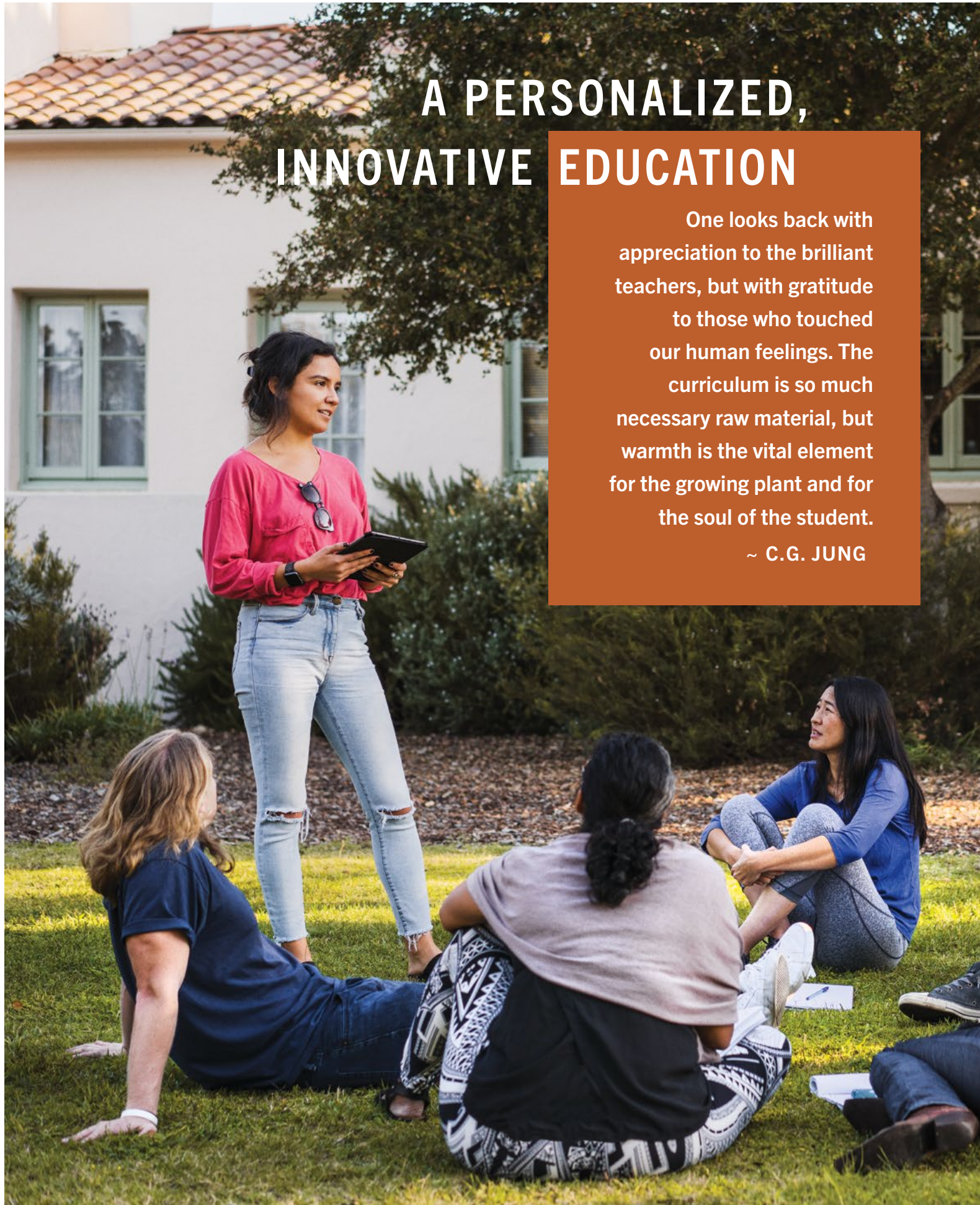
Dr. Grammer is the founder of New Earth. For the last sixteen years, New Earth, one of the few Black-founded and Black-led juvenile justice non-profits in Los Angeles County, has provided case management, arts, education, and job programs to juvenile justice, foster care, and youth at risk. Since the onset of the COVID-19 pandemic, New Earth's doors have remained open as a crucial resource to young people with either very little, or no support amidst the shifting social and global landscape. The organization's focus has expanded to include the offering of immediate essential resources to the most economically vulnerable youth and families in Los Angeles. Currently New Earth is feeding more than 250 families per week while continuing to provide its long-standing programs and case management services to their young members. Since the start of the pandemic, New Earth has served over 16,000 people with fresh, organic, locally sourced produce.



Voices Through the Crisis

In response to the pandemic, Pacifica Graduate Institute Alumni Association created the Covid-19 Scholarship Initiative with a matching tuition waiver from Pacifica Graduate Institute, as part of the PGIAA CARES Project. We awarded ten scholarships ranging from \$500–\$1000, to alleviate the affects of the pandemic on our students. PGIAA is working on a second round of scholarships and will remain supportive of our community during this time.

"We are caught in a constellated moment brought together by death, race, and sorrow. Let us use this moment for the deepening and betterment of ourselves as soulful human beings." ~ DR. FANNY BREWSTER



A PERSONALIZED, INNOVATIVE EDUCATION

One looks back with appreciation to the brilliant teachers, but with gratitude to those who touched our human feelings. The curriculum is so much necessary raw material, but warmth is the vital element for the growing plant and for the soul of the student.

~ C.G. JUNG

PACIFICA'S UNIQUE APPROACH TO GRADUATE EDUCATION

A DIVERSE COMMUNITY

Students come to Pacifica from across the country, and sometimes around the world. Most are working adults, from a variety of ethnic, socioeconomic, and age groups.

A TRANSDISCIPLINARY CURRICULUM

Pacifica's academic programs are transdisciplinary endeavors, drawing on literature, philosophy, mythology, the arts, and critical studies, in order to enliven and deepen the integration of ideas and experience.

INNOVATIVE ACADEMIC FORMATS

Most of Pacifica's degree programs are held monthly in three or four day residential learning sessions. Two degree programs have been offered in a hybrid (i.e., blended) low-residency format, with only four residential sessions convened annually. Both configurations allow adult learners to pursue graduate studies while maintaining other commitments at home and work.

THE COHORT MODEL

At Pacifica, students learn in collaborative, close-knit cohort groups that become genuine communities, sustaining the growth of their members. The relationships formed are often lifelong. The cohort becomes a family where one is known, supported, and welcomed.

A TRANSFORMATIONAL EXPERIENCE

Pacifica students often reflect on their time here as a profound transformational journey. They share their enthusiasm for an experiential education of the mind, heart, and soul.

The Pacifica faculty has found that those with an affinity for the work done at Pacifica share some significant qualities:

- A desire to integrate different aspects of their lives
- A tendency to inquire beyond the literal and concrete
- A calling to develop a career that benefits the well-being of others
- An open-hearted curiosity about exploring themselves, their community, and the larger world



“Good questions live in Pacifica. Good, wild, fantastic questions. They live in the eyes, the faces, the smiles, the rituals, the humility, and the teeming everyday of this fine institution. To learn, teach, and mentor here, no matter your specification, is to become part of a collective inquiry for unspoken depths, for discarded memories, for lingering ancestries, for new political imaginaries, for exquisitely new ways of saying and doing things. For justice beyond justice. We need that today, don't we? If you have a question that has nowhere else to live, bring it to this community. Together, we will cultivate the conditions for it to blossom *into surprise*. That is why Pacifica works. That is why it should work. *That is its premise and promise.*”

~ BAYO AKOMOLAFE, PH.D.

EXCEPTIONAL ACADEMIC RESOURCES

OPUS ARCHIVES AND RESEARCH CENTER

ON THE CAMPUS OF PACIFICA GRADUATE INSTITUTE

OPUS Archives and Research Center is an independent nonprofit organization with facilities on both Pacifica campuses. OPUS preserves, develops, and extends the collections and libraries that have been placed in its care by eminent scholars in the fields of depth psychology, mythology, and the humanities. Extremely valuable as tools for research, the collections are made available to students and scholars. OPUS also offers scholarships, research grants, educational programs, and hosts community events.

Learn more at opusarchives.org



OPUS Archives and Research Center holds personal collections of these scholars:

Joseph Campbell

Marija Gimbutas

James Hillman

Marion Woodman

Christine Downing

Katie Sanford

Jane Hollister and

Joseph Wheelwright

Adolf Guggenbühl-Craig

OPUS holds the private libraries of Joseph Campbell, Marija Gimbutas, and Marion Woodman.

GRADUATE RESEARCH LIBRARY

Pacifica's Graduate Research Library holds special collections related to each of the Institute's degree programs. With branches on both campuses, the library offers access to over 25,000 books and dissertations, as well as audio, video, and psychological testing materials, 200,000 e-books, and thousands of academic journals. Reference librarians are available every day to assist with your library research questions: reference@pacifica.edu.



PACIFICA BOOKSTORE

The Pacifica Bookstore, on Pacifica's Ladera Lane Campus and online, stocks over 5,000 titles, including works by Pacifica faculty and alumni. It also offers clothing, jewelry, and unique objects.

Browse the Pacifica Bookstore
pacificabookstore.com



TWO BEAUTIFUL CAMPUSES BETWEEN THE OCEAN AND COASTAL MOUNTAINS NEAR SANTA BARBARA

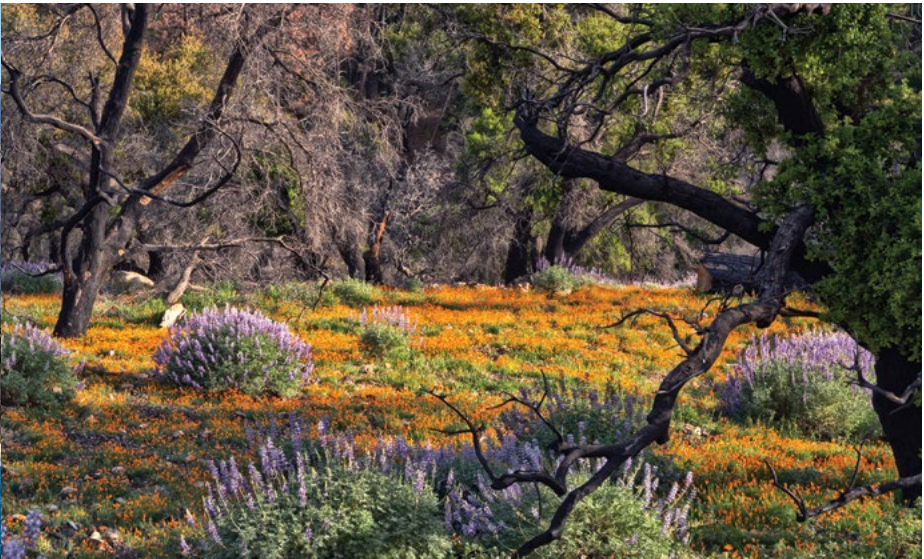


NINETY MILES NORTH OF LOS ANGELES

Pacifica's **Lambert Road Campus** is near the ocean just south of Santa Barbara. The **Ladera Lane Campus** sits in the coastal foothills approximately two miles away.

Both **Pacifica Campuses** have been designed and are carefully maintained with special consideration for the beautiful settings they occupy. Landscaping and people paths are arranged in a way that invites the birds, insects, and other animals of the area to make their homes in these places. Gardens and orchards on the properties are cultivated with organic methods, moving Pacifica closer to its goal of environmental sustainability.

The **Santa Barbara** area has many charms that enrich students' experiences—from the Pacific Ocean with its broad, sandy beaches and the coastal foothills, to the town's Mediterranean architecture and its many cultural, dining, and entertainment offerings.



LAMBERT ROAD CAMPUS

A 13-ACRE EDUCATIONAL AND ADMINISTRATIVE CENTER NEAR THE PACIFIC OCEAN



Pacifica's Lambert Road Campus is on the restored and expanded former site of a philanthropist's 1920's-era estate. The campus is graciously shaded by large oaks and sycamores, with soulful pathways, and inspiring views of the Pacific Ocean and the Santa Ynez Mountains.

The Lambert Road Campus houses classrooms, lecture halls, faculty and administrative offices, the Joseph Campbell and Marija Gimbutas Library, and a Graduate Research Library.



We invite you to gain a sense of place with us. Discover all our Lambert Road Campus has to offer by taking a virtual tour of campus. Visit our website at pacifica.edu or scan the QR code below with your phone to visit us.



LADERA LANE CAMPUS

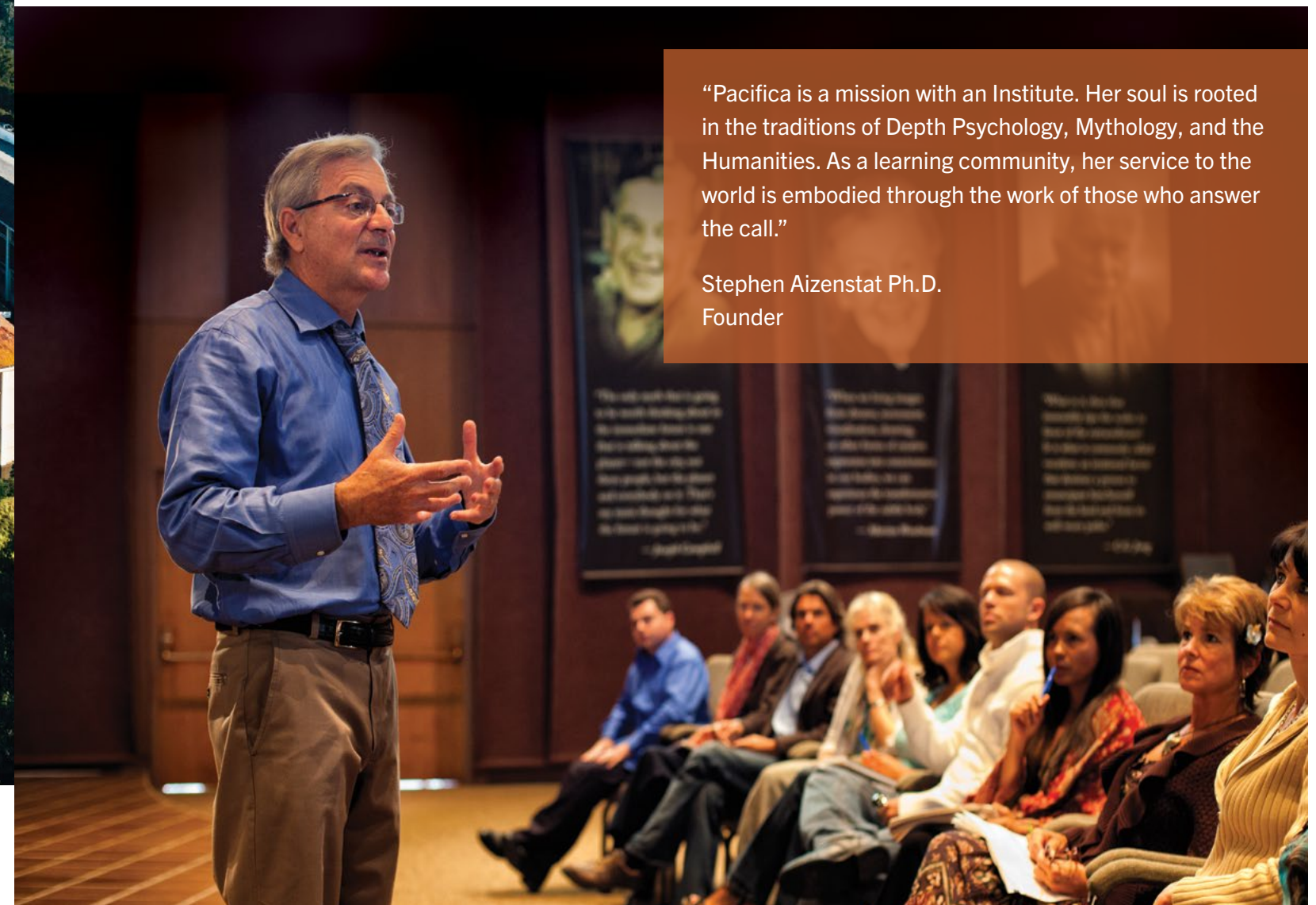
A 35-ACRE EDUCATIONAL AND RETREAT CENTER IN THE COASTAL FOOTHILLS



A short drive from its sister campus on Lambert Road, Pacifica's Ladera Lane Campus is home to a retreat center, classrooms, administrative offices, the Graduate Research Library, and the Pacifica Bookstore. The OPUS Archives and Research Center's rare collections are housed on this campus.



Residential buildings offer lodging for students when classes are in session, and healthful meals are shared in the large communal dining hall. Spacious lawns present views of the Pacific Ocean, Santa Barbara Channel Islands, and surrounding Santa Ynez Mountains. Gardens, fountains, and wooded pathways afford spaces for quiet contemplation and conversation.



"Pacifica is a mission with an Institute. Her soul is rooted in the traditions of Depth Psychology, Mythology, and the Humanities. As a learning community, her service to the world is embodied through the work of those who answer the call."

Stephen Aizenstat Ph.D.
Founder

CONTINUING EDUCATION COURSES & CERTIFICATES



Pacifica Live & On-Demand reimagines the adult learning experience to connect you with internationally recognized subject matter experts and interactive communities of adult learners to offer you exceptional depth-oriented courses that will expand your professional skill base and further your personal development.

Whether it's an on-campus event, an online webinar series, or an Advanced Training Certificate, our vision is to make the depth-oriented, soul-based and forward-thinking scholarship that is reflective of Pacifica Graduate Institute available to a broader world in a way that is relevant and accessible for today's global professional and lifelong learner. This means that we offer you an extensive menu of learning communities and learning formats to choose from, so you can customize the approach and the themes that best fit your personal and professional goals.



For a complete list of Pacifica Online current program offerings, visit retreat.pacifica.edu or call 805.969.3626.

Please Note: Programs are subject to change.



Advanced Training Certificate: Ecopsychology

January 23rd – April 29th, 2023

This Advanced Training Certificate in Ecopsychology, offered online over 13 weeks, has the distinct advantage of combining four perspectives from four internationally renowned authors, educators, and transformational leaders in the fields of Ecopsychology and Ecotherapy. Ecopsychology brings ecology and psychology together to create novel and exciting approaches to the urgent needs of our time.



Memoir Madness: The Art & Psychology of Writing Memoir

March 3rd – 5th, 2023

Do you have a story that is insisting on being told, yet you're wrestling with self-doubt or questions as to where and how to begin? Writing memoir is as much a psychological journey as it is an artistic process. There is no single path to follow, rather every memoirist seems to have to blaze their own trail in what many would agree, often evolves as a type of heroic journey of the soul. While there seems to be some common mile markers along this path, each person's journey is unique.



Imagination, Creativity and Spirituality in Psychotherapy: An Introduction

February 1st, 8th, 15th, 22nd, 2023

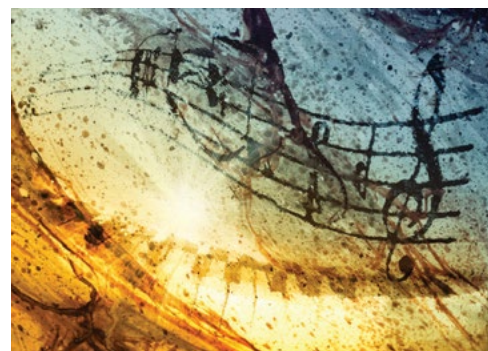
This course is designed to awaken creative desire and expand the imagination of the clinician and in turn, her patient. It could also appeal to anyone looking for creative ways to solve everyday problems. Many varieties of imagination will be explored — the spiritual, the relational, the dreamworld, the aesthetic, and the adaptive.



Decolonizing Jungian Psychology

March 7th, 14th, 21st, 28th, 2023

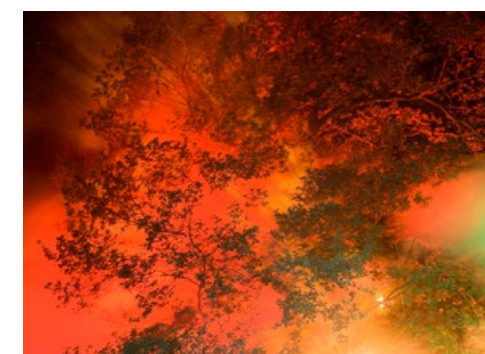
This course is designed to offer the participants an overview of C. G. Jung's thoughts while exploring what some call a "decolonial option" to his work. It is in a sense a form of epistemological resistance to the colonialist and imperialist aims that prevent underrepresented minorities from flourishing in the academic community. This course aims to offer a decolonial option to the traditional view of Jungian Studies.



Archetypal Music Psychotherapy: An Introduction

February 1st, 8th, 15th, 22nd, 2023

Music is everywhere in our lives, both waking and sleeping, inside and out. It is a dynamic, living domain that is an expression of nature itself, which is capable of reflecting back our own phases of growth and development in a myriad of ways. The objective psyche is continuously offering communication through sound-based symbols, but like an unopened letter or a lone tree falling in the forest, most of this communication goes unheard and remains in a state of non-representation.



The Suffering of Ghosts: Working with Traumatic Cultural Histories that Continue to Haunt Us

March 7th, 14th, 21st, 28th, 2023

The Suffering of Ghosts is a four-week webinar series with Jungian analyst, Samuel L. Kimbles, Ph.D., that will explore how the cultural unconscious is organized by complexes that manifest in archetypal story formations, which Samuel calls phantom narratives. Drawing from his newly released book: *Intergenerational Complexes in Analytical Psychology*, this series will focus on how human suffering relates to unacknowledged traumatic cultural histories that continue to haunt us in the present.

CONTINUING EDUCATION COURSES & CERTIFICATES



Advanced Training Certificate: Applied Archetypal Astrology

March 23rd – July 7th, 2023

The times they are a changing, and we need a new language for a new era. Archetypal astrology offers a navigational tool for seeing through personal and global chaos to the deeper currents that influence individuals and nations. This Advanced Training Certificate brings together internationally recognized experts—an experienced Jungian analyst, an archetypal astrologer, and a Jungian scholar—who will introduce students to the language of archetypal astrology.



Precognitive Dreamwork and the Long Self

April 5th, 12th, 19th, 26th, 2023

Every culture on Earth, except for ours, accepts that dreams sometimes foretell future events or experiences. This reality has been excluded from Western science and scholarship since the Enlightenment, but the barriers around this taboo topic are beginning to erode, thanks to new scientific developments (e.g. in quantum physics) and to an informal “citizen science” facilitated by the internet—people sharing their precognitive dream experiences. Precognitive dreams are real, and they are not occasional or rare.



Misogyny in Psychoanalysis

April 6th, 13th, 20th, 27th, 2023

The story of psychoanalysis began with men trying to understand women through the study of hysteria and more significantly through the lens of male experience, with male experience being seen as the “norm.” In the hundred years since the inception of psychoanalysis, many of Freud’s theories have been challenged, re-described, abandoned, and indeed defended in bitter battles.



The Paradoxical Meeting of Depth Psychology and Physics

May 3rd, 10th, 17th, and 24th, 2023

This course journeys through the remarkable union of quantum physics and Jung’s psychology. It was Nobel physicist Wolfgang Pauli who, in extensive discussion with Jung, sought to unify these two extreme fields. The hope was a resolution to the neurotic split we all carry where our inner spiritual life is denied its expression in a rational scientific description of the outer world. The resolution for Pauli would come from a psycho-physically neutral description of reality.



Shadow-Work: Finding Gold in Your Dark Side

June 7th, 14th, 21st, 28th, 2023

C.G. Jung coined the term “Shadow” to refer to the personal unconscious, that part of the mind/body that carries our rejected, unacceptable feelings, beliefs, aspirations, and behaviors. These unconscious forbidden parts—rage, jealousy, shame, addiction, resentment, lust, un-lived talents and fantasies—often erupt in repeating patterns and sabotage our conscious desires. We will explore the individual shadow and how it blocks our aspirations, how it erupts in relationships and destroys intimacy, how it’s banished into the un-lived life and narrows our possibilities, and how it emerges in our spiritual lives, often leaving us disillusioned.



Advanced Training Certificate: Applied Mythology

June 29th – August 10th, 2023

The Advanced Training Certificate in Applied Mythology brings together expert myth practitioners with participants eager to understand the multiple ways in which myth structures not only storytelling, but psyche itself. Recorded learning sessions will usher you into the world of mythology, where deep sources of wisdom can illuminate contemporary turns of life and fate. Live, weekly interactive sessions with master teachers will help you learn to recognize the mythologic patterns that are influencing not only world events, but your own individuation process.



Singing Over Bones: Creative Responses to Grieving

October 4th, 11th, 18th, 25th, 2023

Dr. Bateman discusses how the end of a material relationship can be seen as the beginning of an imaginal one. She describes the creation of imaginal integrities through Storymaking—authoring your loved one’s story and your own in relation to them; and, Symbolmaking—the process of forging a tangible means of connection between the living and the deceased. The class will illustrate creative outcomes to grieving that allow one to recognize presence in absence, reflect and release complex dynamics, and yet stay in relationship and keep loving.



For a complete list of Pacifica Online current program offerings, visit retreat.pacifica.edu or call 805.969.3626.

Please Note: Programs are subject to change.

PACIFICA GRADUATE DEGREE PROGRAM

AND ACADEMIC FORMAT OVERVIEW



THE QUESTION OF VOCATION IS CRUCIAL

And choosing the right one requires listening to the voice within. The root of the word “vocation” is Latin for “voice.” Learning to trust that inner voice is an act of courage.

At Pacifica, students span a wide range of ages, and come from a spectrum of diverse backgrounds. They are all committed—not just to getting an education—but to doing something important that carries real meaning for them.

DEGREE PROGRAM	M.A. Degree	M.A./Ph.D. Degree	Ph.D. Degree	Psy.D. Degree	Preparation for Licensure	Start Date	Campus	3-Day Residential Sessions*	4-Day Residential Sessions*	Hybrid Online/Low-Residency*	Residential Weekend Sessions*	Residential Weekday Sessions*
M.A. in Counseling Psychology	●				●	Fall	Ladera	Monthly			●	●
Psy.D. in Counseling Psychology				●	●	Fall & Spring◊	Lambert	Monthly			●	
M.A./Ph.D. in Clinical Psychology		●			●	Fall	Lambert		Monthly		●	
M.A./Ph.D. in Depth Psychology with Specialization in Jungian and Archetypal Studies		●				Fall & Spring	Ladera		Quarterly	●	Mid-week through the weekend	
M.A./Ph.D. in Depth Psychology with Specialization in Community, Liberation, Indigenous and Eco-Psychologies		●				Fall	Ladera	Monthly				●
Ph.D. in Depth Psychology with Specialization in Integrative Therapy and Healing Practices			●			Fall	Lambert**	Monthly**			●	
M.A./Ph.D. in Mythological Studies		●				Fall	Lambert	Monthly			●	Summer
M.A. in Depth Psychology and Creativity with Emphasis in the Arts and Humanities	●					Fall & Spring	Ladera		Quarterly	●	Mid-week through the weekend	

** Students entering the DPT program in fall 2023 will attend via the residential model until fall 2024 when in their second year they will attend via a hybrid model.

◊ Spring Quarter enrollment to the Psy.D. Counseling Psychology program is available only for students who have successfully completed the M.A. Counseling Psychology program within the past five academic years, have fully completed the admissions process, and been offered admission to the program.

For six of Pacifica’s degree programs, students come to campus once a month for three- or four-day learning sessions. Between sessions, students continue reading, research, writing, and practicum experiences. The two hybrid low-residency programs allow students to learn in their home environment in online classrooms with residential campus sessions four times a year.

Pacifica Graduate Institute is regionally accredited by the Western Association of Schools and Colleges Senior College and University Commission (WSCUC).

The M.A. is a Master of Arts Degree. Depending on the program, it is a two or two-and-a-half year program, and the final project may be a thesis or a creative project.

The Ph.D. is a Doctor of Philosophy Degree, requiring two-and-a-half or three years of coursework followed by a dissertation.

The Psy.D. is a Doctor of Psychology Degree, requiring three years of coursework and a dissertation, followed by a one-year internship.

M.A. IN COUNSELING PSYCHOLOGY

WITH EMPHASIS IN MARRIAGE AND FAMILY THERAPY, PROFESSIONAL CLINICAL COUNSELING, AND DEPTH PSYCHOLOGY



The M.A. Counseling Psychology Program with Emphasis in Marriage and Family Therapy, Professional Clinical Counseling, and Depth Psychology is dedicated to offering students unique and evidence-based comprehensive training in the art of marriage, family, and individual psychotherapy and professional clinical counseling with an appreciation for the systemic and immeasurable dimensions of the psyche.

Depth psychology invites a curiosity about the psyche and respect for the diversity and resiliency of the human experience. Transdisciplinary courses in literature, mythology, religion, and culture deepen students' abilities to link collective systems and archetypal themes to sociopolitical issues in the lives of individuals, families, and communities.

As preparation for professional licensure in Marriage and Family Therapy (LMFT) and Professional Clinical Counseling (LPCC), a rigorous two-and-a-half year academic program emphasizes theoretical understanding and experiential training in clinical skills, inclusive of a supervised practicum traineeship experience. Research studies and thesis writing prepare students to explore and contribute to the tradition of scholarship within the depth psychological tradition to further Pacifica's dedication to thoughtful and soulful practice.



The California Association of Marriage and Family Therapists honored Pacifica's Counseling Psychology program with its **2018 Outstanding School or Agency Award**.



MATTHEW BENNETT, PSY.D.
Department Co-chair

At its core, the M.A. Counseling Psychology Program honors the distinctive call to the service of the individual and collective psyche.



JEMMA ELLIOT, M.A.
Department Co-chair

Founded on a deep relational ethic, a commitment to experiential academia, and a focus on the integration of the imaginal, this program prepares future depth psychotherapists for the rigors of professional licensure.

ACADEMIC FORMAT

M.A. Counseling Psychology classes occur in three-day sessions approximately once each month during the fall, winter, and spring quarters. There is a seven-day summer session each of the first two years.

CURRICULUM OVERVIEW

FIRST YEAR

Fall

- Counseling and Psychotherapeutic Theories and Techniques – CP 501, 2.5 Units
- Introduction to the Theories of the Depth Tradition – CP 534, 2 Units
- Counseling Skills: Process of Psychotherapy I – CP 515, 3 Units
- Professional Skills Development I.A. – CP 565, .25 Unit

Winter

- Human Growth and Development – CP 520, 2 Units
- Geropsychology and Long Term Care – CP 526, 1 Unit
- Ethics and the Law: Child Abuse Assessment and Treatment – CP 525, 1 Unit
- Depth Psychology Theory and Practice I: Analytical Psychology – CP 541, 2 Units
- Counseling Skills: Process of Psychotherapy II – CP 516, 3 Units
- Professional Skills Development I.B. – CP 566, .25 Unit

Spring

- Psychopathology – CP 502, 4.5 Units
- Family Systems and Domestic Violence – CP 605, 1.5 Units
- Depth Psychology Theory & Practice II: Imaginal/Archetypal Psychology – CP 542R, 1.5 Units
- Counseling Skills: Process of Psychotherapy III – CP 517, 3 Units
- Professional Skills Development I.C. – CP 567, .25 Unit

Summer

- Multicultural Counseling Theories and Techniques – CP 530, 2.5 Units
- Professional Orientation: Ethics and the Law – CP 523, 3.5 Units
- Research in Psychology – CP 620, .75 Unit
- Group Counseling Theories and Techniques I – CP 527, 1.5 Units
- Professional Skills Development I.D. – CP 568, .25 Unit

SECOND YEAR

Fall

- Clinical Practice I – CP 610, 3 Units
- Child Psychotherapy – CP 532, 1.5 Units
- Counseling in Substance Use Disorders, Co-occurring Disorders and Behavioral Addictions I – CP 660A, 3 Units
- Community Mental Health Counseling I – CP 607A, 3 Units
- Seminar in Directed Research I.A. – CP 650A, .3 Unit
- Professional Skills Development II.A. – CP 665, .2 Unit

Winter

- Clinical Practice II – CP 611, 3 Units
- Marriage, Family, and Relationship Counseling I – CP 601, 3 Units
- Depth Psychology Theory & Practice III: Psychoanalytic Psychotherapy – CP 543R, 1 Unit
- Psychological Assessment I – CP 630A, 2.5 Units
- Seminar in Directed Research I.B. – CP 650B, .45 Unit
- Professional Skills Development II.B. – CP 666, .25 Unit

Spring

- Clinical Practice III – CP 612, 3 Units
- Counseling in Substance Use Disorders, Co-occurring Disorders and Behavioral Addictions II – CP 660B, 1.5 Units
- Marriage, Family, and Relationship Counseling II – CP 602, 3 Units
- Community Mental Health Counseling II – CP 607B, 1.5 Units
- Seminar in Directed Research I.C. – CP 650C, .3 Unit
- Professional Skills Development II.C. – CP 667, .25 Unit

Summer

- Seminar in Directed Research II.A. – CP 651A, .75 Unit
- Advanced Theories and Techniques: Human Sexuality – CP 522, 1 Unit
- Psychological Assessment II – CP 630B, 2 Units
- Depth Psychology Theory & Practice IV: Attachment and Trauma – CP 544R, 1 Unit
- Group Counseling Theories and Techniques II – CP 528, 2 Units
- Clinical Practice IV – CP 613, 1 Unit
- Professional Skills Development II.D. – CP 668, .25 Unit

THIRD YEAR

Fall

- Cultural Psychology – CP 511, 2 Units
- Career Development I – CP 608A, .75 Unit
- Psychopharmacology I – CP 670A, 2 Units
- Seminar in Directed Research II.B. – CP 651B, 1 Unit
- Depth Psychology Theory & Practice V: Environmental Psychology – CP 545R, 1 Unit
- Clinical Practice V – CP 614, 1 Unit

Winter

- Psychopharmacology II – CP 670B, 2.5 Units
- Career Development II – CP 608B, 3.75 Units
- Depth Psychology Theory and Practice VI: Somatic Psychotherapy – CP 546, 1 Unit
- Seminar in Directed Research II.C. – CP 651C, 1 Unit
- Group Counseling Theories and Techniques III – CP 529, 1 Unit
- Clinical Practice VI – CP 615, 1 Unit

Some courses are conducted online or have online components. This curriculum may vary depending on evolving academic needs.

This program meets the licensure requirements for the State of California. The curriculum may not meet all the requirements that other states have for licensure. Each student is responsible for determining and remaining informed of licensure requirements in their state of residence.

This degree program is accredited by the Western Association of Schools and Colleges Senior College and University Commission (WSCUC).

For gainful employment information, visit pacifica.edu/gainfulemployment.

M.A. IN COUNSELING PSYCHOLOGY

WITH EMPHASIS IN MARRIAGE AND FAMILY THERAPY, PROFESSIONAL CLINICAL COUNSELING, AND DEPTH PSYCHOLOGY



What an educator does in teaching is to make it possible for the students to become themselves.

~ PAULO FREIRE

Throughout the program, students are engaged in experiential learning and collaborative processes during quarterly sessions, in online and hybrid courses, and at their second- and third-year practicum sites.

Collaborative learning reflects Pacifica's team approach to the assessment and treatment of individuals, couples, families, and groups.

ACHIEVEMENTS OF PACIFICA COUNSELING PSYCHOLOGY STUDENTS AND GRADUATES INCLUDE:

- Excellent pass rates on California state licensing exams
- Publishing theses and articles in a wide range of professional and depth-oriented journals
- Receiving MFT Consortium Grants
- Successful employment by mental health agencies upon completion of degrees
- Continuing education in doctoral programs
- High levels of job satisfaction, enriched growth and learning in the field

STUDENTS IN THE M.A. IN COUNSELING PSYCHOLOGY PROGRAM LEARN TO:

- Be proficient in **theoretical orientations** that offer perspective and provide meaning to systemic patterns and human behavior.
- Demonstrate **process and clinical skills**, both face-to-face and via telehealth.
- Identify underlying psychological and systemic dynamics of human interaction.
- Determine and implement **effective interventions** and evidence-based treatment plans while demonstrating knowledge of **Family Systems theories**.
- Apply understanding to **case conceptualization** assessment and treatment in clinical practice.
- Enhance client functioning and well-being via **multiculturally sensitive** referrals and collaborative treatment team consultations.
- Understand individual, systemic, community, political, and biologic aspects of diversity and demonstrate knowledge and **respect for diversity**.
- Assess, diagnose, and treat the symptoms and characteristics of **behavioral addictions**, substance use, and dependence.
- Be knowledgeable, understand, and apply evidence-based assessment procedures to client cases and demonstrate awareness of **community mental health** and diversity-related considerations.
- Apply current **legal and ethical standards** and guidelines while working with diverse populations and demonstrate their knowledge and application in scholarly work and **supervised practicum** as they pertain to marriage and family therapy and professional clinical counseling.
- Identify and integrate **systemic depth psychological perspectives** of human interaction and demonstrate competence in the field of marriage and family therapy and professional clinical counseling.
- Demonstrate an evolving capacity to **self-assess** and articulate one's own strengths.

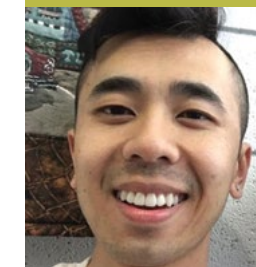
ALUMNI OF THIS PROGRAM



CARL CHAVEZ
M.A. Counseling Psychology
Associate Marriage Family Therapist (AMFT) serving children and families in the foster care system.



KYRIE CARPENTER
M.A. Counseling Psychology
Tending the soul of the world to help move aging and dementia out of the shadow of our culture through speaking, consulting, writing, and coaching. Author of *Healing Dementia* (2017).



MINH TRAN
M.A. Counseling Psychology
Clinician III at a nonprofit partner of the Los Angeles County Department of Mental Health that treats low-income individuals, and families of predominantly Latino descent.



CIÚIN DOHERTY
M.A. Counseling Psychology
Associate Marriage and Family Therapist in private practice with emphasis on holistic mind-body integration, and EMDR.

PSY.D. IN COUNSELING PSYCHOLOGY

WITH EMPHASIS IN DEPTH PSYCHOLOGY



Pacifica's Psy.D. Program in Counseling Psychology offers a uniquely immersive, experiential and relationally designed doctoral degree in Counseling Psychology designed to prepare graduates for licensure as licensed psychologists. This exciting new program is deeply informed and organized around principles of psychodynamic psychology, and emphasizes psychotherapy practice informed by an appreciation for the importance of the unconscious life in the individual and in communities, as well as an emphasis on the deeply relational quality of human psychology, both as a philosophy of psychotherapeutic intervention and as an organizing principle for the academic program itself. Following a practitioner-scholar model (also called the "Vail model"), this program represents Pacifica's commitment to grounding the principles of depth psychology in clinical practice within community settings. Its graduates will be prepared to function as licensed psychologists in a variety of applied settings, including private practice, community mental health, substance abuse and dual diagnosis settings, hospital and inpatient settings, the nonprofit and private sectors, and many other professional contexts.

Pacifica trains students toward an integration of broad and general knowledge in applied counseling psychology with research on the unconscious and relational factors that motivate individual and collective behavior. Depth psychology invites a curiosity about the psyche and respect for the diversity and resiliency of the human experience. Transdisciplinary courses exploring literature, mythology, religion, and culture deepen students' abilities to link collective systems and archetypal themes to sociopolitical issues in the lives of individuals, families, and communities. Although broadly psychodynamic in its orientation, the Psy.D. Program offers particular emphasis in psychotherapeutic training informed by both psychoanalytic and analytic (Jungian) perspectives.

This program develops psychologists who are skilled in a broad range of clinical work, including psychotherapy, assessment, supervision, and consultation, as well as integrative approaches to health, which are informed by depth psychological perspectives through a psychodynamic lens. As a Psy.D. Program, this degree offering is dedicated to educating future psychologists who prefer to focus on applied practice rather than research, although appreciation for and fluency with the language and methodology of research also informs the program, culminating in a doctoral dissertation which represents a unique individual contribution to the established research literature. The emphasis on applied

practice is grounded in the program's clinical training requirements, including progressively advanced supervised experiences in applied settings gained in practicum and pre-doctoral internship.



~ MATTHEW BENNETT, PSY.D.



~ JEMMA ELLIOT, M.A.

The process of psychotherapy mirrors the story of the emergence of the individual psyche within the relational field of intersubjective reality: the internal, ineffable, and primal realities of the emerging self become actualized in the presence of relationship. To be seen by others is to become real. As a healing art, psychotherapy must be an emotionally honest and relationally charged act of co-creation.

DEPARTMENT CO-CHAIRS

ACADEMIC FORMAT

Counseling Psychology Psy.D. classes occur in three-day sessions (Friday morning through Sunday afternoon) approximately once each month during Fall, Winter, and Spring quarters, with a seven-day Summer session, over a period of three years. Pre-doctoral internship is expected to take place during the fourth year of training in the program, following the completion of coursework, qualifying and comprehensive exam, and significant progress toward dissertation.

CURRICULUM OVERVIEW

FIRST YEAR

Fall

Professional and Ethical Development Seminar I – PSY 755, 1 Unit
Introduction to Depth Psychology – PSY 819, 2 Units
Clinical Interview – PSY 940, 1 Unit
Jungian Based Psychotherapy I – PSY 810, 2 Units
History and Systems – PSY 700, 2 Units

Winter

Professional and Ethical Development Seminar II – PSY 756, 1 Unit
Psychotherapy with Diverse Populations – PSY 845, 2 Units
Gender and Human Sexuality – PSY 901, 1 Unit
Advanced Psychopathology I – PSY 730, 2 Units
Jungian Based Psychotherapy II – PSY 811, 2 Units

Spring

Professional and Ethical Development Seminar III – PSY 757, 1 Unit
Alcohol, Chemical Dependency, and Addictive Behaviors – PSY 900, 2 Units
Community Mental Health, Public Policy, and Depth Psychology – PSY 825, 2 Units
Developmental Psychology I: Childhood through Adolescence – PSY 830, 2 Units

Summer

Research Design and Methodology I – PSY 950, 3 Units
Legal, Ethical, and Professional Practice – PSY 832, 2 Units
Social Foundations of Human Behavior I: Group Processes – PSY 800, 2 Units

SECOND YEAR

Fall

Objective Personality Assessment – PSY 931, 3 Units
Assessment Practicum Seminar I – PSY 759, 1 Unit
Psychoanalytic Based Psychotherapy I – PSY 711, 2 Units
Research Design and Methodology II – PSY 951, 2 Units

Winter

Research Design and Methodology III – PSY 952, 3 Units
Assessment Practicum Seminar II – PSY 760, 1 Unit
Advanced Psychopathology II – PSY 731, 2 Units
Psychoanalytic Based Psychotherapy II – PSY 712, 2 Units

Spring

Cognitive and Intellectual Assessment – PSY 930, 3 Units
Assessment Practicum Seminar III – PSY 761, 1 Unit
Projective Personality Assessment – PSY 932, 2 Units
Dissertation Development – PSY 955, 2 Units

Summer

Cognitive Foundations of Human Behavior – PSY 837, 2 Units
Developmental Psychology II: Adulthood through Old Age – PSY 831, 2 Units
Theories of Psychometric Measurement – PSY 933, 3 Units

THIRD YEAR

Fall

Advanced Research Methods in Clinical Psychology I – PSY 956, 3 Units
Psychotherapy Practicum Seminar I – PSY 763, 1 Unit
Psychoanalytic Based Psychotherapy III – PSY 713, 2 Units
Evidence Based Best Practices – PSY 913, 2 Units
Dissertation Completion I – PSY 958A, 2 Units

Winter

Violence and Trauma – PSY 834, 3 Units
Psychotherapy Practicum Seminar II – PSY 764, 1 Unit
Psychoanalytic Based Psychotherapy IV – PSY 714, 2 Units
Principles of Clinical Supervision, Consultation, and Community Assessment – PSY 752, 2 Units
Dissertation Completion II – PSY 958B, 2 Units

Spring

Social Foundations of Human Behavior II – PSY 801, 3 Units
Psychotherapy Practicum Seminar III – PSY 765, 1 Unit
Advanced Research Methods in Clinical Psychology II – PSY 957, 2 Units
Post-Jungian Based Psychotherapy – PSY 815, 2 Units
Dissertation Completion III – PSY 958C, 2 Units

Summer

Principles of Psychopharmacology – PSY 873, 2 Units
Biological Foundations of Human Behavior – PSY 735, 3 Units
Affective Foundations of Human Behavior – PSY 838, 2 Units
Dissertation Completion IV – PSY 958D, 2 Units

FOURTH YEAR

Pre-Doctoral Internship
Dissertation Completion V – PSY 959A, 3 Units
Dissertation Completion VI – PSY 959B, 3 Units

The required fourth year focuses on internship training and dissertation writing. The program meets the licensure requirements for the State of California.

The curriculum may not meet all the requirements that other states have for licensure in clinical psychology. Students are encouraged to regularly check the requirements in the state(s) where they may be practicing.

The curriculum may vary depending upon changing academic needs.

This degree program is accredited by the Western Association of Schools and Colleges Senior College and University Commission (WSCUC). This degree program is not accredited by the American Psychological Association. Visit pacifica.edu/gainfulemployment for gainful employment information.

PSY.D. IN COUNSELING PSYCHOLOGY WITH EMPHASIS IN DEPTH PSYCHOLOGY

This program prepares students for licensure in clinical psychology.*

The Psy.D. in Counseling Psychology Program's intensive learning sessions and its class cohort configuration lend themselves to an experience of scholarly and personal development. Throughout the program, students are engaged in experiential learning and collaborative processes during quarterly sessions. Collaborative learning reflects Pacifica's team approach to the assessment and treatment of individuals, couples, families, and groups.

The Psy.D. program is rooted in the culture and academic methodology of Pacifica's long-standing and thriving M.A. Counseling Psychology Program. As an academic degree, it bridges the rich history of teaching depth psychology with the contemporary world of applied counseling psychology. This practical integration emphasizes depth psychological perspectives within current areas of psychological studies such as: relational and intersubjective approaches to psychotherapy; attachment and trauma; evidence-based practices; integrative assessment; interpersonal neurobiology and biopsychosocial approaches to integrative health care; community-based practice approaches; and mental health public policy.



* The program meets the licensure requirements for the State of California. The curriculum may not meet all the requirements that other states have for licensure in clinical psychology. Students are encouraged to regularly check the requirements in the state(s) where they may be practicing.

THE PSY.D. IN COUNSELING PSYCHOLOGY IS DESIGNED TO DEVELOP GRADUATES WHO ARE ABLE TO:

- Develop literacy in the literature and tradition of classical and emerging depth psychology scholarship that is also guided by psychodynamic theory and the humanities.
- Critically explore Jungian scholarship and practice including classical analytical traditions as well as contemporary archetypal and imaginal approaches to psychology and psychotherapy.
- Apply principles of classical and contemporary psychoanalytic theory to the relational process of psychotherapy, including contributions of object relations, self psychology, and intersubjectivity theory.
- Be proficient in theoretical orientations that offer perspective and provide meaning to systemic patterns and human behavior.
- Identify underlying psychological and systemic dynamics of human interaction.
- Apply understanding to case conceptualization assessment and treatment in clinical practice.
- Enhance client functioning and well-being via multiculturally sensitive referrals and collaborative treatment team consultations.
- Assess, diagnose, and treat the symptoms and characteristics of behavioral addictions, substance use, and dependence.
- Apply evidence-based assessment procedures to client cases and demonstrate awareness of community mental health and diversity-related considerations.
- Apply current legal and ethical standards and guidelines while working with diverse populations and demonstrate their knowledge and application in scholarly work and supervised practicum as they pertain to professional clinical counseling.
- Identify and integrate systemic depth psychological perspectives of human interaction and demonstrate competence in the field of professional clinical counseling.
- Demonstrate an evolving capacity to self-assess and articulate one's own strengths and organizing principles.
- Understand individual, systemic, community, political, and biologic aspects of diversity and demonstrate knowledge and respect for diversity.
- Advanced practicum seminars conducted as case colloquia that engage psychoanalytic, Jungian/ archetypal/imaginal, and other evidence based approaches to clinical practice.
- Demonstrate an evolving capacity to self-assess and articulate one's own strengths.



Anything you do from the soulful self will help lighten the burdens of the world. Anything. You have no idea what the smallest word, the tiniest generosity, can cause to be set in motion. Mend the part of the world that is within your reach.

~ CLARISSA PINKOLA ESTÉS

The Psy.D. Program in Counseling Psychology is comprised of three years of coursework, with practicum training occurring concurrently with years two and three, and pre-doctoral internship comprising a fourth year. The dissertation process is projected to span the third year of coursework and the internship year.

YEAR ONE	Course Work		
YEAR TWO	Course Work	Practicum	
YEAR THREE	Course Work	Practicum	Dissertation
YEAR FOUR	Internship (1500 Hours)		Dissertation

M.A./PH.D. IN CLINICAL PSYCHOLOGY

WITH EMPHASIS IN DEPTH PSYCHOLOGY

This program prepares students for licensure in clinical psychology.*



Pacifica Graduate Institute's Clinical Psychology Program (M.A./Ph.D.) engages students both intellectually and in terms of the relational capacities crucial to clinical practice, inviting them toward a radically transformative relationship with themselves and the world. The program offers training within the paradigms of both the human sciences and natural sciences, including foundational courses in psychology as well as courses that draw on areas such as the humanities and the arts. The curriculum is designed to lead to licensure as a clinical psychologist, based on educational requirements for psychologists in the State of California.

Inaugurated in 1987, Pacifica's M.A./Ph.D. Clinical Psychology Program is dedicated to educating scholar-practitioners who integrate theory, research and clinical practice within human science and depth psychology traditions. The program is committed to social justice as essential to the roles of clinical psychologist as therapist and researcher, as well as citizen.

The program focuses on the theoretical, clinical, and social dimensions of depth psychology and educates students to become scholars in these areas. Found in multiple cultural contexts and perspectives, including the explorations of Freud and Jung, depth psychologies are distinguished by their recognition of a latent or unconscious dimension of psychological life. This unconscious element, or depth in human experience, is understood as essential to the transformative character of the therapeutic relationship as well as engagement in scholarly inquiry.

Inspired by psychoanalytic, Jungian, and existential-phenomenological perspectives in their historical and contemporary formulations, including relational, archetypal, and hermeneutic psychologies, the curriculum incorporates related approaches such as feminism and gender studies,

liberation and decolonial critical theories, and indigenous perspectives and ecological studies. A critical dialogue is maintained with contemporary developments in brain science and postmodern philosophy, along with examination of historical factors that influence the science and practice of psychology.

Clinical instruction emphasizes the importance of the therapeutic relationship, particularly transference and counter-transference dynamics, the significance of dreams, early development including attachment and trauma, developmental stages across the lifespan, individuation as a process of psychic transformation, mind-body integration, therapeutic presence, and the cultural context of healing.

Our strong research curriculum is guided by depth psychology's understanding of psychological phenomena. Hence, the courses focus on qualitative research methods that affirm the interpretative dimension of description as well as the unconscious dynamic between researcher and what is being researched. Student research encompasses the pursuit of knowledge, personal transformation, and the practice of social engagement.

What if we radically underestimate the potency of psychology, of holding a psychological attitude? In my life I have been asking and answering this question. I am continually finding new ways to bring this attitude into my personal relationships, with my private practice clients, and in my political practice with community activists and leaders. This is the soul-work of psychology, psychology as a calling, to support healing, justice, and human development. At Pacifica I have found a diverse community of learners equally passionate about using psychology to support these goals. The administration and staff, the faculty and students, and the alumni embody the spirit of psychology; we are rising to its full potency. We follow our own unique paths and bend them toward one another for the sake of shared inquiry and study, developing our self-awareness, and finding our unique paths of service.

~ PETER T. DUNLAP, PH.D., Department Chair



CURRICULUM OVERVIEW

FIRST YEAR

Practicum Seminars

Professional and Ethical Development Seminar I, II, III
– CL 755, CL 756, CL 757, 1 Unit each

Annual Assessment

1st Year Annual Assessment for Program Advancement
– CL 758, 0 Units

Depth Psychology Clinical and Foundational Practice Courses

Psychoanalytic-Based Psychotherapy I: Developmental Perspectives
– CP 711, 2 Units
Jungian-Based Psychotherapy I: Personality Structure and Function
– CP 810, 2 Units
History and Systems of Psychology – CP 700, 2 Units
Psychological Assessment I, II – CP 930, CP 931, 2 Units each
Legal, Ethical, and Professional Practice – CP 832, 2 Units
Advanced Psychopathology I – CP 730, 2 Units
Biological Foundations of Human Behavior – CP 735, 2 Units

Human Science Research and Scholarly Inquiry Courses

Research Designs and Methodology I: Qualitative, Quantitative, and Mixed Methods – CP 932, 2 Units
Research Designs and Methodology II: Qualitative Methods of Analysis – CP 933, 2 Units
Research Designs and Methodology III: Quantitative Design and Statistical Analysis – CP 926, 3 Units

Social Justice and Social Activism Courses

History of Depth Psychology and the Human Science Traditions
– CL 819, 2 Units
Phenomenological Psychology: Theory and Practice
– CL 917, 2 Units
Emergent Clinical and Social Theories in Depth Psychology
– CP 799, 2 Units

SECOND YEAR

Practicum Seminars

Supervision Practicum Seminar I, II, III: Assessment and Diagnosis
– CL 759, CL 760, CL 761, 1 Unit each

Depth Psychology Clinical and Foundational Practice Courses

Psychoanalytic-Based Psychotherapy II: Personality and Psychopathology – CP 712, 2 Units
Jungian-Based Psychotherapy II: Affect, Mind, and Psyche
– CP 811, 2 Units
Principles of Psychopharmacology – CP 873, 2 Units
Developmental Psychology through the Lifespan – CP 830, 3 Units
Alcohol, Chemical Dependency, and Addictive Behaviors
– CL 900, 2 Units
Cognitive Foundations of Human Behavior – CL 837, 2 Units
Affective Foundations of Human Behavior – CL 838, 2 Units

Human Science Research and Scholarly Inquiry Courses

Depth Psychological Designs and Methods I – CL 928, 2 Units
Theories of Testing and Measurement – CP 934, 2 Units
Research and Scholarly Inquiry Courses Advanced Clinical Research Approaches and Dissertation Development – CP 961, 1 Unit

Social Justice and Social Activism Courses

Indigenous Approaches to Psychology – CP 803, 1 unit
Archetypal Psychology II: Social Basis of Human Experience
– CP 840, 2 Units
Social Foundations of Human Behavior – CP 800, 2 units

Emergent Clinical and Social Theories in Depth Psychology
– CP 799, 2 units

Annual Assessment

2nd Year Annual Assessment for Program Advancement
– CL 762, 0 Units

Qualifying Exam for M.A. in Clinical Psychology

M.A. Qualifying Exam – CL 890, 0 Units

THIRD YEAR

Practicum Seminars

Psychotherapy Practicum Seminar I, II, III: Effective Psychological Interventions – CL 763, CL 764, CL 765, 1 Unit each

Annual Assessment

3rd Year Annual Assessment for Program Advancement
– CL 766, 0 Units

Depth Psychological Clinical and Foundational Practice Courses

Post-Jungian Psychotherapy: Biological, Ecological, and Cultural Systems – CP 745, 2 Units
Theories of Group Psychotherapy – CP 719, 1 unit
Archetypal Psychology I: Personality, Psychopathology, and Culture
– CP 814, 2 Units
Advanced Psychopathology II – CP 731, 2 Units
Principles of Clinical Supervision and Consultation – CL 752, 1 Unit
Evidence-Based Psychotherapies – CL 912, 2 Units
Violence and Trauma: Developmental and Social Theories
– CP 834, 2 Units

Research and Scholarly Inquiry Courses

Advanced Clinical Research Approaches and Dissertation Development II – CP 962, 2 Units
Depth Psychological Designs and Methods II – CL 929, 2 Units
Advanced Clinical Research Approaches and Dissertation Development III – CP 963, 2 Units
Research Designs and Methodology IV: Advanced Qualitative Methods – CL 940, 2 Units

Social Justice and Social Activism Courses

Gender and Human Sexuality – CP 901, 1 Unit
Psychotherapy with Diverse Populations – CP 845, 2 Units
Emergent Clinical and Social Theories in Depth Psychology
– CP 799, 2 Units

Capstone Projects and Program Requirements

Comprehensive Exam Portfolio
– CP 989, 0 Units (Degree Requirement)
Dissertation Writing – CP 990, 15 Units (Degree Requirement)
Pre-doctoral Internship (Degree Requirement)
Personal Psychotherapy
– CP 950, 0 Units (Degree Requirement)

The required fourth and fifth years of study focus on internship training and dissertation writing.

Selected Courses have web-enhanced learning components. The curriculum is not intended to meet all the requirements of each state for licensure in clinical psychology. The curriculum may vary depending upon changing academic needs. The required fourth and fifth years of study focus on internship training and dissertation writing.

This degree program is accredited by the Western Association of Schools and Colleges Senior College and University Commission (WSCUC). This degree program is not accredited by the American Psychological Association.

Visit pacifica.edu/gainfulemployment for gainful employment information.

M.A./PH.D. IN CLINICAL PSYCHOLOGY

WITH EMPHASIS IN DEPTH PSYCHOLOGY

This program prepares students for licensure in clinical psychology.*

The commitment to a human science model of psychology—a significant addition to conventional psychology’s predominantly natural science orientation—emphasizes **human meaning as the fundamental component of psychological life**. This focus on meaning, carried out by way of the program’s qualitative research orientation, yields an in-depth understanding of how things matter for individuals within their life situations, while also acknowledging the cultural and historical character of meaning. Accordingly, our curriculum is infused with the study of mythology, history, religion, philosophy, and the arts.

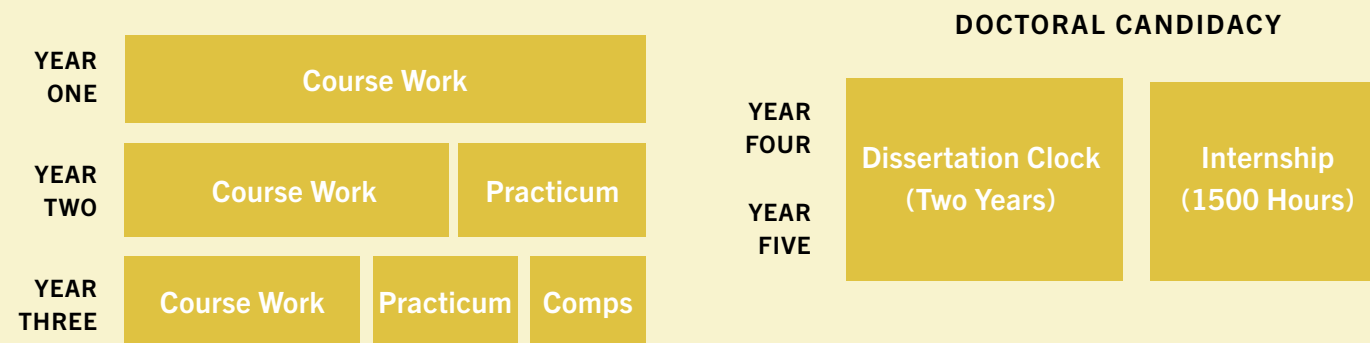
By emphasizing the **importance of scholarship in the education of psychologists**, the program continues depth psychology’s longstanding approach to clinical training. The clinical orientation that infuses our curriculum facilitates the engagement of **theory and research in addressing individual, community, and global concerns**.

Our goal is to prepare students to become constructively engaged in diverse clinical, academic, and community settings as researchers and clinicians who are grounded in depth traditions. The affecting beauty of the campus, an intense residency format, and class cohort configuration all lend themselves to an experience of scholarly and personal development keenly attuned to Pacifica’s mission of “tending soul in and of the world.”



The M.A./Ph.D. program includes three years of coursework, followed by a two-year dissertation clock.

The internship may be undertaken before, during, or after the dissertation phase (but after all coursework is completed).



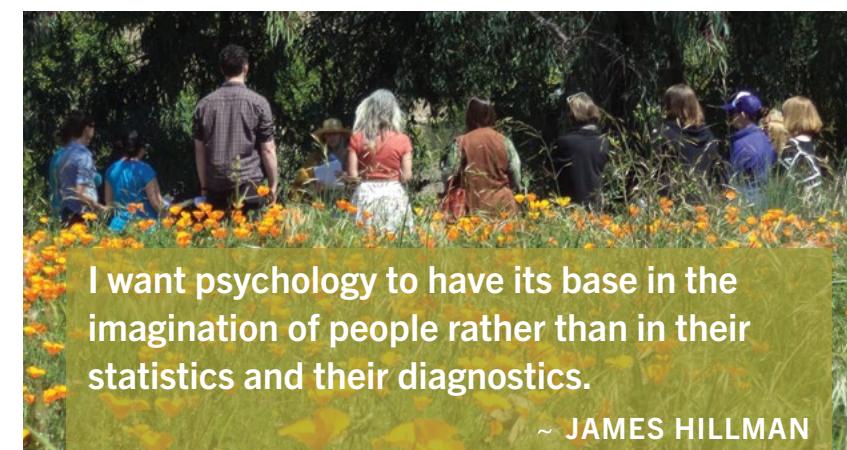
*The program meets the majority of educational requirements for licensure in the State of California. The curriculum may not meet all the requirements that other states have for licensure in clinical psychology. Students are encouraged to regularly check the requirements in the state(s) where they may be practicing.

KEY FEATURES OF THE M.A./PH.D. PROGRAM:

- A curriculum rooted in classical and emerging depth psychology scholarship, guided by the humanities.
- A human science model of research that relies on phenomenological, interpretive, and constructivist approaches.
- Courses on Jungian scholarship and practice that emphasize classical analytical traditions as well as contemporary archetypal and imaginal approaches to psychology and psychotherapy.
- Coursework emphasizing classic and contemporary psychoanalytic scholarship and practice.
- A phenomenological focus that integrates social and critical psychology in order to reflect a deep appreciation of the cultural and historical character of psychological experience.
- A depth psychological approach to research from a hermeneutic interpretive standpoint that takes the unconscious dimensions of research into account.
- The embrace of multicultural and critical perspectives in understanding gender, sexuality, indigenous psychologies, somatic and non-Western perspectives.
- Advanced practicum seminars conducted as case colloquia that engage psychoanalytic, phenomenological, and Jungian/archetypal/imaginal approaches to clinical practice.

ACADEMIC FORMAT

Clinical Psychology classes occur in four-day sessions (Thursday evening through Sunday afternoon) once each month during fall, winter, and spring. There is also one week-long summer session each year. Between learning sessions, advising, mentoring, study and instruction continue through individual and group mentorship from faculty, web-enhanced learning, and cohort support groups.



I want psychology to have its base in the imagination of people rather than in their statistics and their diagnostics.

~ JAMES HILLMAN

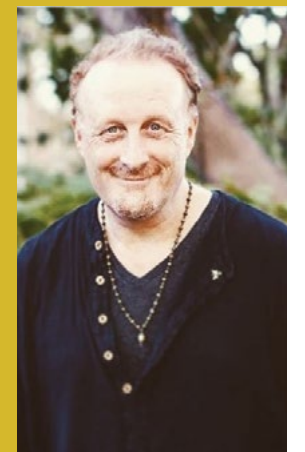


JANET BRITO
Ph.D. Clinical Psychology

AASECT-certified sex therapist licensed in clinical psychology and social work. Founder of Center for Sexual and Reproductive Health in Honolulu, Hawaii.

MICHAEL MOLLURA
Ph.D. Clinical Psychology

Psychologist in private practice and award-winning composer whose dreamwork pairs dreams with original music to animate and amplify images in order to access healing.



INDHUSHREE RAJAN
Ph.D. Clinical Psychology

In private practice in Beverly Hills, working with sex trafficking survivors, the LGBTQ community, the entertainment industry, and immigrants.

JASON BUTLER
Ph.D. Clinical Psychology

Licensed clinical psychologist and Associate Professor of Integral Counseling Psychology, School of Professional Psychology and Health at CIIS. Author of Archetypal Psychotherapy.



M.A./PH.D. IN DEPTH PSYCHOLOGY

WITH SPECIALIZATION IN JUNGIAN AND ARCHETYPAL STUDIES



The Jungian and Archetypal Studies Specialization (DJA) is for students interested in exploring what Jung called “archetypes”: universal principles and organizing patterns that pre-condition and animate human experience from the depths of the collective unconscious, a dimension of the psyche common to each of us.

The program curriculum enables students to develop a comprehensive understanding of the process of psychological transformation C. G. Jung called “individuation,” which leads to the realization of a greater personality or what he termed “the Self.”

This process was the focus of Jung’s study of religious and alchemical symbolism. Inspired by Jung’s understandings, James Hillman went on to develop archetypal psychology, which emphasizes the way mythic figures provide root metaphors for

understanding the psyche. By engaging life with a mythopoetic vision, we can perceive the gods and goddesses as present to all things and take up the work Hillman called “soul-making.”

This rigorous, creative exploration of Jungian and archetypal psychology provides students with a range of theories, skills, and practices they can apply directly to their professional, personal, and creative lives, while addressing the collective challenges and opportunities at this moment in history. For those called to explore the personal and collective psyche, this program of study provides a unique opportunity to engage with, apply, and advance depth psychological theories and practices within the Jungian and archetypal traditions. Building on the work of C.G. Jung and James Hillman, students consider approaches to the psyche that foster healing, transformation, self-expression, creativity, and the development of consciousness.

The Jungian and Archetypal Studies specialization moves depth psychology from the clinical consulting room out into the wider world.

The faculty is comprised of esteemed international scholars with a broad range of areas of expertise. They introduce students to foundational theoretical constructs in the field while helping them to engage critically and creatively with the course material. The coursework itself is aligned with Jung’s emphasis on the “ineluctable psychological necessity” of individuation, the process by which one might attain deep self-knowledge, further the development of consciousness, and better understand the unconscious factors shaping human experience.



~ KEIRON LE GRICE, PH.D., Specialization Co-chair

“By stimulating and supporting the scholarship and creative research of students, this program promotes the crucial task of advancing depth psychological ideas and practices as catalysts for individual and cultural transformation.”



~ GLEN SLATER, PH.D., Specialization Co-chair

“More than ever before, with so many collective problems facing us, we need to follow the ‘prime directive’ of depth psychology, which is to become conscious of the psychological forces shaping our perceptions and actions.”

ACADEMIC FORMAT

This transformative and scholarly degree program takes advantage of online technology to allow students to work and learn in their home environments, while also taking part in engaged community sessions on Pacifica’s Ladera Lane Campus. Classes begin online and meet during four-day residential sessions (Thursday, Friday, Saturday, Sunday) once per quarter. During these on-campus sessions, students have access to the Institute’s extensive resources and are able to engage with their classmates and instructors face-to-face, combining lecture, discussion, and experiential and embodied learning. Residential sessions also allow time for exploration and community building.

CURRICULUM OVERVIEW

FIRST YEAR

Introduction to Depth Psychology – DJA 700, 3 Units

Jungian Psychology: The Individuation Journey
– DJA 720, 3 Units

C.G. Jung in Context – DJA 710, 3 Units

Dreamwork: Tending the Living Images – DJA 825, 3 Units

Archetypes: Universal Patterns of the Psyche
– DJA 800, 3 Units

Mythopoetic Imagination: Viewing Film, Art, and Literature from a Jungian Perspective – DJA 805, 3 Units

Reflective Studies I: Foundations for Research
– DJA 920, 3 Units

Complexes: Jung’s “Royal Road” to the Unconscious
– DJA 810, 3 Units

SECOND YEAR

Archetypal Cosmology and Astrological Hermeneutics
– DJA 880, 3 Units

Imaginal Ways of Knowing: Active Imagination, The Red Book, and Psychic Creativity – DJA 820, 3 Units

Archetypal Psychology – DJA 730, 3 Units

Depth Psychology and the Mythic Tradition – DJA 815, 3 Units

Psychoanalytic Openings: Evolving Understandings of the Human Personality in Psychoanalysis and Analytical Psychology
– DJA 740, 3 Units

Psychological Types – DJA 835, 3 Units

Reflective Studies II – DJA 930, 3 Units

Synchronicity and the New Sciences – DJA 855, 3 Units

THIRD YEAR

Technology and Psyche – DJA 882, 3 Units

Somatic Studies: The Psyche-Soma Connection
– DJA 845, 3 Units

The Poetic Basis of Mind – DJA 870, 3 Units

The Alchemy of Transformation – DJA 865, 3 Units

Depth Psychology and the Sacred: Approaching the Numinous
– DJA 850, 3 Units

Dissertation Development – DJA 950, 3 Units

Ecopsychology: The Psyche in Nature – DJA 860, 3 Units

Reflective Studies III – DJA 940, 3 Units

CONTINUING

Self-Directed Studies – DJA 970, 3 Units

Dissertation Writing – DJA 960, 15 Units

This curriculum may vary depending upon evolving academic needs. The required fourth and fifth years of study focus on reading, research, and dissertation writing.

This degree program is accredited by the Western Association of Schools and Colleges Senior College and University Commission (WSCUC).

Visit pacifica.edu/gainfulemployment for gainful employment information.

The big question is whether you are going to be able to say a hearty yes to your adventure.

~ JOSEPH CAMPBELL

M.A./PH.D. IN DEPTH PSYCHOLOGY WITH SPECIALIZATION IN JUNGIAN AND ARCHETYPAL STUDIES



People who are enrolled in our academic programs with an online component will tell you that **community and intimacy build quickly in this environment**. While you may not “see” your classmates every month, you will “hear” from them weekly. In fact, online learning is particularly conducive to hearing the voices of all students, as it requires participation from everyone; students who normally may be very quiet in a traditional classroom may be more comfortable “speaking” online.

In the Jungian and Archetypal Studies specialization, about half of the instruction takes place online and half in the classroom, during four-day residential sessions on campus held once per quarter. Here you will gather with your course instructors and classmates for lectures, discussions, presentations, and group work. The two modes of learning—online and classroom—complement each other perfectly.

Community has been at the heart and soul of this specialization from its inception in 2010, taking up and advancing C. G. Jung’s own aspiration for the field. In 1948, when Jung gave his dedication speech on the occasion of the founding of the C.G. Jung Institute in Zürich, he called for a community of scholars to come together to imagine extensions for depth psychology in the world. This specialization aims to be such a community, one where students and faculty come together to support each other in exploring, applying, and advancing Jungian and archetypal studies “without limit” in the world.

As an integral part of the program, students will engage in ongoing reflection on the relevance of the material to their own lives, personal and vocational. The program also seeks to foster strong writing skills and supports students in the skills they will need for publishing and presenting their work to outside audiences.

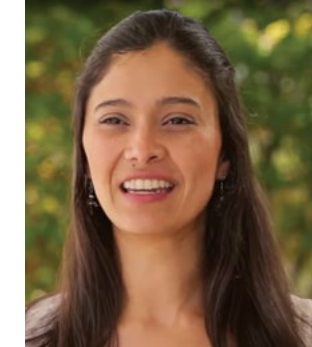
STUDENTS IN THE JUNGIAN AND ARCHETYPAL STUDIES SPECIALIZATION:

- Critically explore a range of topics central to our understanding of the role of the unconscious psyche in human experience, such as healing, myth, dream, art, soul, spirit, ecology, religion, creativity, personal transformation, individuation, the development of consciousness, and more.
- Deepen the capacity for imaginal, symbolic, mythic, critical, theoretical, and archetypal thinking and being in the world, in order to better confront our present collective challenges.
- Engage with the creative, dynamic unconscious in both its personal and collective dimensions.
- Hone the expression of their unique voice and vision through courses in research, writing, publication, and presentation.
- Study side by side with Jungian scholars and practitioners interested in envisioning new possibilities for depth psychological understanding and transformative practice, both individually and culturally.
- Read deeply and broadly from The Collected Works of C.G. Jung, Jung’s *The Red Book*, and other core texts in the depth psychological tradition.
- Evaluate the limitations and potentials of Jungian and archetypal psychology within contemporary contexts.



The meeting of two personalities is like the contact of two chemical substances. If there is any reaction, both are transformed.
~ C.G. JUNG

ALUMNI OF THIS PROGRAM



DIANA ARIAS, PH. D.
“My dream was to be at Pacifica. It was not only a personal decision, it was my soul—my meaning in life. Pacifica was a calling.”

EVIJA VOLFA VESTERGAARD PH.D.

Has a background in international banking and is President of the Jungian Society for Scholarly Studies. Her book on Latvian folktales, *Trauma, Cultural Complexes, and Transformation: Folk Narratives and Present Realities*, was based on her dissertation research.



STACEY SHELBY, PH. D.
In private practice in clinical depth psychotherapy. A Registered Clinical Counselor in Canada and certified dream tender who teaches workshops and lectures internationally. Author of *Tracking the Wild Woman Archetype: A Guide to Becoming a Whole Indivisible Woman*.

ERIK JENSEN, PH. D.

Now on the faculty of Adler University, Vancouver, BC, where he integrates his Pacifica research on Nietzsche and depth psychology into his teaching. He is also a board member of the Jungian Society for Scholarly Studies.



M.A./PH.D. IN DEPTH PSYCHOLOGY

WITH SPECIALIZATION IN COMMUNITY, LIBERATION, INDIGENOUS, AND ECO-PSYCHOLOGIES



This specialization seeks to address the critical personal, community, cultural, and ecological challenges of our time. Nourished by depth psychology, students become sensitive to the interdependence of individual, cultural, and collective dynamics, and to dialogue, the arts, and the imaginal as catalysts to vision and transformation. Community and ecological fieldwork and research are designed to help students pursue their distinctive areas of interest, gathering the theoretical understanding and the fieldwork and research skills to deepen their engagement in their work.

This degree program specialization is a bold initiative to forge transdisciplinary and transformative approaches to the critical personal, community, cultural, and ecological challenges of our time. Accomplishing this necessitates a radical engagement in re-conceiving psychology as a potentially liberatory and restorative force in society, one engaged in initiatives to promote social, economic, and environmental justice, peacebuilding, and ecological sustainability. The specialization is committed to rebuilding fragmented cultural and ecological connections, and to co-creating democratic, dialogical, joyful, sustainable, and nonviolent living.

To study community and ecopsychology in the light of liberation and indigenous psychologies commits us to deeply explore and address the profound effects of injustice, violence, and exploitation on psychological, communal, and ecological well-being. The curriculum places multicultural approaches to depth psychological theories and practices in dynamic dialogue with ecopsychology, indigenous psychologies, critical community psychology, and psychologies of liberation from diverse cultural settings. Students gain an understanding of the interdependence of individual, community, cultural, and ecological well-being.

Coursework nurtures creative approaches to collaboration in organizations, nonprofits, community groups, and educational settings. Through community and ecological

fieldwork and research, students are supported in the pursuit of their distinctive areas of interest, and in strengthening their research and practice skills. Students are able to make their own significant contributions to the attainment of a just and sustainable world, in which—as Paulo Freire said—“it is easier to love.”



SUSAN JAMES, PH.D.
Specialization Co-Chair

Through their scholar-activism our students are growing their visions for a just, sustainable, and peaceful world. Here they gather the theoretical and practical tools for the work of social and environment justice. In the face of ongoing coloniality, they are co-creating alternatives that welcome a pluriverse of needed knowledges and liberatory action.

~ SUSAN JAMES

ACADEMIC FORMAT

Classes for the Community, Liberation, Indigenous and Eco-Psychologies (CLIE) the specialization take place in nine three-day sessions (Monday, Tuesday, Wednesday), approximately once each month during fall, winter, and spring (October to July). In the first and second summers, students complete fieldwork and research in their home communities or other off-campus sites. In the third summer and subsequent year(s), students are involved in writing their dissertations in their home communities.

CURRICULUM OVERVIEW

FIRST YEAR

Fall

- Introduction to Decolonial Depth Psychology – DPC 730, 2 Units
- Introduction to Critical Community Psychology – DPC 700, 2 Units
- Indigenous Psychologies I – DPC 710, 2 Units
- Council Practice – DPC 871, 2/3 Unit

Winter

- Psychoanalytic Tradition: Social Psychoanalysis – DPC 760, 2 Units
- Psychologies of Liberation – DPC 781, 2 Units
- Ecopsychology I: Earth Democracy – DPC 732, 2 Units
- Critical Community Inquiry – DPC 872, 2/3 Unit

Spring

- Jungian Psychology – DPC 761, 2 Units
- Foundations for Research in Depth Psychology: Participatory and Qualitative Inquiry – DPC 881, 2 Units
- Theatre of the Oppressed – DPC 873, 1.33 Units
- Community Dreamwork – DPC 874, 1.33 Units

Summer

- Community/Ecological Fieldwork Practicum – DPC 783, 5 Units

SECOND YEAR

Fall

- Archetypal Psychology – DPC 762, 2 Units
- Phenomenology and Communication of Depth Psychological Cultural and Ecological Work – DPC 880, 2 Units
- Depth Psychology of Violence and Its Prevention – DPC 731, 2 Units
- Practicing Decoloniality and Anti-Racism – DPC 926, 2/3 Unit

Winter

- Hermeneutic and Phenomenological Traditions – DPC 991, 2 Units
- Liberation Studies and Action – DPC 965, 2 Units
- Indigenous Psychologies II – DPC 860, 2 Units
- Restorative Justice – DPC 875, 2/3 Unit

Spring

- Community Program and Organization Evaluation – DPC 879, 2 Units
- Ecopsychology II: Environmental and Earth Justice – DPC 847, 2 Units
- Special Topics in Liberatory Qualitative Inquiry – DPC 930, 2 Units
- Somatic Approaches to Trauma Healing – DPC 877, 2/3 Unit

Summer

- Community/Ecological Fieldwork and Research Practicum – DPC 883, 5 Units
- Depth Transformative Practices – DPC 997, 0 Units

THIRD YEAR

Fall

- Participatory Research Practicum: Creating an Interpretive Community – DPC 990, 2 Units
- Community Building and Empowerment – DPC 720, 2 Units
- Social Network Analysis – DPC 878, 1 Unit
- Decolonial Philosophy – DPC 925, 1.66 Units

Winter

- Advocacy and Policy Development – DPC 886, 2 Units
- Psychosocial and Collective Trauma – DPC 923, 2 Units
- Reconciliation and Peacebuilding – DPC 740, 2 Units
- Dissertation Development I – DPC 932A, 2/3 Unit

Spring

- Critical Topics in Depth Psychology – DPC 963, 2 Units
- Critical Topics in Liberation Psychology – DPC 964, 1 Unit
- Liberatory Pedagogy – DPC 992, 2 Units
- Critical Topics in Environmental Justice – DPC 832, 1 Unit
- Dissertation Development II – DPC 932B, 2/3 Unit
- Critical Topics in Indigenous Psychologies – DPC 861, 1 Unit

Summer

- Research Writing: Conceiving the Dissertation – DPC 933, 5 Units

CONTINUING

- Dissertation Writing – DPC 980, 15 Units

This curriculum may vary depending upon evolving academic needs. The required fourth and fifth years of study focus on reading, research, and dissertation writing.

This degree program is accredited by the Western Association of Schools and Colleges Senior College and University Commission (WSCUC).

Visit pacific.edu/gainfulemployment for gainful employment information.

M.A./PH.D. IN DEPTH PSYCHOLOGY

WITH SPECIALIZATION IN COMMUNITY, LIBERATION, INDIGENOUS, AND ECO-PSYCHOLOGIES

This specialization is the only graduate program in the U.S. that focuses on liberation psychology, and the only one that places critical community psychology, indigenous psychologies, and ecopsychology into dynamic conversation with one another. In community and ecopsychological fieldwork, students act as bridges between the knowledge developed by ecological and cultural workers and each area of specialization.

Students apply learning to leadership positions in a wide variety of professions:

- Health services (including hospice)
- Youth, secondary, adult, college and alternative education
- Organizational development and transformation
- Prison abolition and restorative justice initiatives
- Governmental and nongovernmental organizations
- Social and environmental justice, community building and policy development
- Advocacy and grassroots coalitions
- Arts activism
- Trauma healing
- Peacebuilding and community dialogue
- Planning and evaluation
- Land preservation
- Ecological sustainability
- Local food initiatives
- Philanthropy
- Microlending and economic alternatives

ALUMNI OF THIS PROGRAM



HARRY GRAMMER, Ph.D. Depth Psychology
President and Founder of New Earth, a mentor-based arts, educational, and vocational program empowering youth in the juvenile justice system. Named as a 2018 Obama Foundation Inaugural Fellow.



ALISA ORDUÑA
Ph.D. Depth Psychology
Senior Advisor on Homelessness, City of Santa Monica, CA.



ELIZABETH DELIGIO
Ph.D. Depth Psychology
Member, Board of Directors, Chicago Justice Torture Center.



AMBER MCZEAL
Ph.D. Depth Psychology
Writer, vocalist, and sacred scholar, Amber utilizes sound therapy and guided somatic imagery to engage the knowledge of the body within an interactive and liberatory arts practice. In 2018, Amber launched her organization, Decolonizing the Psyche, where she weaves somatic praxis with Afro-Indigenous spiritual technologies and social justice—deep decoloniality—in efforts to end oppression and create more humane social relationships.



RABBI TIRZAH FIRESTONE
Ph.D. Depth Psychology
Trauma and Ancestral Healing Facilitator, author of *Wounds into Wisdom: Healing Intergenerational Jewish Trauma*.



“Culture Contains the Seed of Resistance Which Blossoms into the Flower of Liberation” by Miranda Bergman and O'Brien Thiele. Mural designed and painted in 1984 and completely restored in 2014. Balmy Alley, Mission District, San Francisco, California.

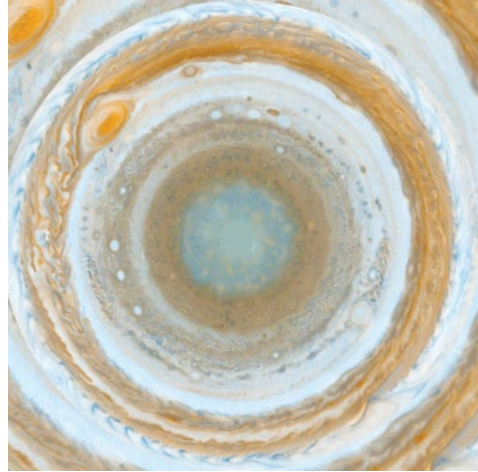
STUDENTS IN THE COMMUNITY, LIBERATION, INDIGENOUS, AND ECO-PSYCHOLOGIES SPECIALIZATION:

- Study individual, group, and cultural life through critical analysis of depth psychology, decolonial theories, as well as local resistance movements
- Engage anti-racism theory and practice reconciliation
- Learn to apply innovative approaches to trauma healing, restorative justice, ecological sustainability, community building, economic justice, alternatives to violence, peace-building, and reconciliation
- Develop scholarly and creative writing skills to inform social and environmental transformation
- Practice participatory action research and evaluation, while deepening ethical discernment about power and privilege
- Train in a wide variety of group approaches to cultural and ecological work
- Heighten sensitivity to the imaginal, the metaphorical, and the symbolic
- Develop the capacity to teach in academic and community learning environments

There are a variety of scholarships available for this specialization (see page 62), including Coverdell Fellows Program Scholarships for returned Peace Corps volunteers, Herman Warsh Scholarships, Pacifica Yellow Ribbon Scholarships for veterans, Pacifica Matching Americorps Scholarship Program, and Abakanowicz Community and Ecological Fieldwork and Research Fellowships.

PH.D. IN DEPTH PSYCHOLOGY

WITH SPECIALIZATION IN INTEGRATIVE THERAPY AND HEALING PRACTICES



An innovative doctoral specialization that re-imagines approaches to therapeutic practice, enhances, and supports the individuation work of students, and integrates the essential perspectives of depth psychology and applied healing traditions.

Students develop important mentoring relationships with Pacifica's unique faculty of clinicians, consultants, and scholars that include: Jungian analysts, post-Jungian theorists and therapists, clinical psychologists, indigenous elders, psychiatrists, psychodynamic therapists, systems therapists, existential/humanistic and archetypal therapists, constructivist therapists, spiritual counselors, ecotherapists, nurses and other health and medical professionals, and advanced scholars in research, mythology, consciousness, integrative health, multiculturalism, complex adaptive systems, and the humanities.

This doctoral specialization cultivates an integrative approach to professional development in the healing arts informed by bridging transdisciplinary frameworks with depth psychological inquiry. Working with leading faculty, students in this program engage in a deeply personalized experience with special consultation groups embedded into the curriculum and individual mentoring. The program fosters advanced therapeutic skills and practices that honor the contextualization and integration of body, mind, spirit, soul, and culture, including alternative and non-linear healing modalities.

We invite you to join a unique group of academic and practice-oriented professionals who are called to deepen their therapeutic work through an integrative study of healing based on the visionary aspects of depth psychology. Become a part of a learning community that explores the many ways

of knowing and relating, nonlinearity and the intersubjective field, and addresses critical connections between psychology, consciousness, culture, spirituality, and wellness.

We welcome students with profound curiosity about themselves and the world, and lifelong learners devoted to transformative engagement with the numinous, the psyche, the relational, complexity and emergence, artistic intuition, somatic engagement, multiculturalism, and the natural world.

Students and faculty work together to integrate essential healing traditions and cutting edge research—drawing from indigenous and ancient practices, mythological and transdisciplinary frameworks, ecotherapeutic and somatic modalities, multicultural and contemporary perspectives, and emerging science on affect, implicit/somatic contexts, intersubjectivity, contemplative practice, consciousness, creativity and the arts.

Our lives are full of paradox and uncertainty. This program invites deep compassion and curiosity about what is called for in current systems of healing. Students share that the program facilitates both personal and professional transformation and profound understandings about individuation processes and cultural and collective contexts. Grounded in the wisdom of depth psychology and its foundational meanings and applications, the program ventures into transdisciplinary inquiry, engaging dialogue, and contemplative and creative processes. We ask the difficult questions of consciousness while attending to current ways of addressing therapy and healing in this rapidly changing world. Honoring the many ways of knowing and holding a stance of equity and inclusion, drawing deeply on the power and relevance of the symbolic, we meet each other where we are and open to emergent possibilities.

~ JULIET ROHDE-BROWN, PH.D.
Specialization Chair



ACADEMIC FORMAT

Students matriculating in the Ph.D. in Depth Psychology with Specialization in Integrative Therapy and Healing Practices in fall 2022, will come to campus for 3 weekend residential sessions each quarter (fall, winter, spring) for their first year of coursework. In their second and third years, residential sessions will take place once each quarter for 5 days from Monday through Friday. The web-enhanced learning components occur throughout the program.

CURRICULUM OVERVIEW

FIRST YEAR

Fall

- Foundations of Depth Psychology for the Healing Professions – DPT 730, 2 Units
- Jungian Psychology and Contemporary Healing I: Applied Theory and Practice – DPT 761, 2 Units
- Foundations of Scholarly Research and Writing – DPT 784, 2 Units

Winter

- Imaginal and Experiential Dimensions of Therapeutic Practice – DPT 962, 2 Units
- Cultural Dimensions of Psychological Life: Engaging Collective Trauma, Cultural Healing, and Social Justice – DPT 830, 2 Units
- Archetypal Psychology: Re-Visioning Approaches to the Psyche – DPT 762, 1.5 Units
- Selected Topics I – DPT 974, 1 Unit

Spring

- Dissertation Development I: Imagination, Calling, and Rigor in Doctoral Scholarship – DPT 832, 2 Units
- Healing Narratives: Writing Compelling Practice Studies and Client Stories – DPT 785, 2 Units
- The Relational Field I: Theoretical Distinctions and Expanded Paradigms – DPT 763, 1.5 Units
- Practice Consultation Groups I – DPT 750, 1.5 Units

SECOND YEAR

Fall

- Psyche and the Sacred: Psychology and Spirituality in Dialogue – DPH 920, 2 Units
- The Inner Landscape of Dreams and Active Imagination – DPH 780, 1.5 Units
- Depth Approaches to Psychopathology – DPH 760, 2 Units
- Practice Consultation Groups II – DPH 751A, 1.5 Units

Winter

- Interpersonal Neurobiology, Affective Neuroscience, and Depth Psychology – DPH 870, 2 Units
- Eco-Spirituality and Eco-Therapy – DPH 732, 2 Units
- Practice Consultation Groups III – DPH 850, 1.5 Units
- Selected Topics II – DPH 992, 1.5 Units

Spring

- The Relational Field II: Psychic Pain and the Human Condition – DPH 863, 2 Units
- Written Comprehensive Examination – DPH 899, 1.5 Units
- Dissertation Development II: Qualitative and Mixed Methods Research – DPH 782, 2 Units
- Practice Consultation Groups IV – DPT 851A, 1.5 Units

THIRD YEAR

Fall

- Body, Mind, and Soul in the Healing of Trauma: Somatic, Neurological, and Archetypal Approaches – DPH 975, 2 Units
- Working with Illness and Death: East-West, Depth, and Indigenous Perspectives on Suffering – DPH 894, 2 Units
- Advanced Dissertation Development – DPH 944, 2 Units
- Practice Consultation Groups V – DPH 852, 1.5 Units

Winter

- Jungian Psychology and Contemporary Healing II: Engaging Complexity and Diversity – DPH 861, 2 Units
- Selected Topics IIA – DPH 990, 1 Unit
- Selected Topics III – DPH 993, 2 Units
- Practice Consultation Groups VI – DPH 950, 1.5 Units

Spring

- Psyche, Soma, Cyborg – DPH 781, 2 Units
- Enacting the Oral Tradition: Oral Comprehensive Presentation – DPH 994, 2 Units
- Practice Consultation Groups VII – DPH 951, 1.5 Units

CONTINUING

- Dissertation Writing – DPH 999, 15 Units

The program also features a series of selected seminars and lectures on a range of important practice areas, including but not limited to the following possible topics: Dream Tending, Systemic Racism and Healthcare Disparity, Organizational and Group Dynamics, Jung and Shamanism, Expressive and Therapeutic Arts, Healing Mythologies, Sexuality and Gender, Addictions, Sociopolitical Contexts and Cultural Complexes, Family Constellations, Adverse Childhood Experiences and Wellness, Shadow and Power in the Healing Professions, The Meaning of Integration, Evolution of Jungian Analysis, James Hillman's Cultural Critique of Psychology, Traditional African and Mesoamerican Healing Perspectives, Interspiritual Contexts and Contemplative Practice, Alternative Healing Arts, Inner Life and Trauma, Mindfulness, Psychodrama, Implicit Processes, Jung's Red Book, Indigenous Healing Traditions, Treating the Soul in the Health and Medical Professions, Somatic Therapy, Yoga Philosophy, Intersubjectivity and the Quantum Field, Solastalgia in the Face of Climate Change, Earth-Based Modalities, Energy Medicine, Neurophenomenology, Non-Local Consciousness, the Biofield, Bibliotherapy, Therapeutic Vocations and Careers, East-West Frameworks and/or Restorative Justice, and other current issues and movements influencing the healing professions.

This curriculum may vary depending upon changing academic needs. Selected courses may have online components. The required two-year dissertation period, following coursework, focuses on scholarly research and writing.

This degree program is accredited by the Western Association of Schools and Colleges Senior College and University Commission (WSCUC). Visit pacific.edu/gainfulemployment for gainful employment information.

PH.D. IN DEPTH PSYCHOLOGY

WITH SPECIALIZATION IN INTEGRATIVE THERAPY AND HEALING PRACTICES

The Ph.D. in Depth Psychology with Specialization in Integrative Therapy and Healing Practices requires master's-level education and commitment to healing-oriented research and applied work. The program is ideal for diverse practitioners in the following professions, including:

- Psychotherapists and Psychologists
- Marriage and Family Therapists, Social Workers, and Professional Counselors (licensed or pre-licensed)
- Health and Medical Professionals (Nursing, Physicians, Allied Health Providers)
- Jungian Analysts and Psychoanalysts
- Specialized Addiction and Treatment Counselors
- Expressive Arts Therapists
- Spiritual and Pastoral Counselors
- Health and Wellness Practitioners with Advanced Training
- Consciousness Researchers and Educators
- Energy Psychology Researchers and Practitioners
- Other qualified Consultants and Counselors



“At some point, on our way to a new consciousness, we will have to leave the opposite bank, the split between the two mortal combatants somehow healed so that we are on both shores at once and, at once, see through serpent and eagle eyes.”

~ GLORIA E. ANZALDÚA, *BORDERLANDS/LA FRONTERA* (1987)

STUDENTS IN THE INTEGRATIVE THERAPY AND HEALING PRACTICES SPECIALIZATION:

- Join an advanced doctoral cohort of diverse professionals collaborating and deepening their work with clients and themselves.
- Explore the growing field of depth psychological research and develop perspectives that help address the critical needs of our world in the face of climate change, pandemics, and systemic racism.
- Develop a greater capacity to work symbolically with psyche and soma, exploring images, dreams, symptoms, individual and cultural complexes, synchronicity, and creativity.
- Work towards becoming advanced practitioners, academic educators, supervisors, scholarly researchers, or authors in the field.
- Examine the critical underpinnings of therapeutic processes, intersubjectivity and paradox, and the broad range of theoretical approaches to mental, physical, and spiritual well-being.
- Build mentoring relationships with distinguished faculty seasoned in depth work and devoted to supporting students in deepening their practice, individuation journey, and contribution to the collective.
- Study the works of leading scholars who have bridged psychological, cultural, mythological, historical, ecological, and social traditions in a transdisciplinary framework to advance broader understanding of human experience.
- Develop advanced skills in important depth-oriented practice areas.
- Investigate the important connections between the health of an individual or group and the health of their environment and culture through courses that consider ecology, non-linear systems, collective trauma, social justice, somatic experience, cross-cultural dynamics, and collaboration with the arts.

The call may have been more like gentle pushings in the stream in which you drifted unknowingly to a particular spot on the bank. Looking back, you sense that fate had a hand in it.

~ JAMES HILLMAN

ALUMNI OF THIS PROGRAM



CRYSTAL RAMIREZ
Ph.D., LMFT
Depth Psychology
Clinical Director of New Beginnings Counseling Center, a nonprofit mental health center providing psychological counseling and support to low-income families and individuals.

DOUGLAS THOMAS
Ph.D., LCSW
Depth Psychology
Jungian-based psychotherapist in private practice who presents workshops and talks on LGBTQ issues and dream therapy.



ANGELA DEVITA
Ph.D., LMFT
Depth Psychology
In private practice in Ventura, California, and a frequent traveler who offers depth-oriented online coaching to expats, business travelers, authors, teachers, and healers worldwide.

GINGER SWANSON
Ph.D. Depth Psychology
Founder of Asarum Retreats, who brings a shamanic history and sensibility to her private hypnotherapy practice and retreat work.



M.A./PH.D. IN MYTHOLOGICAL STUDIES

WITH EMPHASIS IN DEPTH PSYCHOLOGY



As the only doctoral program in the country dedicated to the exploration of human experience through the interdisciplinary and multicultural study of myth, ritual, religion, literature, depth psychology, and art, the Mythological Studies Program cultivates scholarship, self-inquiry, and imagination in those who seek to understand and express the depths of the psyche. The program operates on the underlying assumption that myth has the power to touch our deepest creative energies, and to generate symbolic images that confer significance upon the complexity of modern life and history. Myth thrives on paradox, ambiguity, and the shape-shifting ways that metaphor informs and transforms our lives. Cultivating the mythic imagination leads to self-revelation and a profound and dynamic understanding of cultures—both of our own and others.

The curriculum as a whole is animated by two basic questions: How is this material meaningful to me in my life and work, and how is it meaningful to the world within which I live?

The sequence of course work provides a sustained inquiry into the diverse mythologies of the world, situating them in the global context of the postmodern world. Throughout the program, students engage in the close reading of classic works of world literature, including Homer's *Odyssey*, the Greek tragedies, the Hebrew Bible, the *Ramayana* and *Mahabharata*, medieval grail legends, and fairy tales. The rituals and contemplative practices of religious traditions are investigated along with mythic and archetypal aspects of modern literature, contemporary events, and popular culture. Several methods of scholarly interpretation are taught with a special emphasis on the hermeneutical approaches of depth psychology.

Students consolidate their learning through a sequence of special topics courses taught by alumni who utilize their training in their professional careers as well as by distinguished faculty members from other Pacifica programs and from outside Pacifica. Mentoring throughout matriculation on the program is available from core faculty members. Two journals provide students with opportunities for publication in academic and creative writing. The curriculum is further augmented by an annual colloquium lecture given by distinguished guest scholars—such as Maria Tatar (Harvard University), Jeffrey Kripal (Rice University), and Yvonne Chireau (Swarthmore College)—who address critical issues in the study of myth and contemporary culture.

Graduates of the program enrich their personal and professional

lives through the transformative power of myth. Alumni utilize their degree in a range of professions such as education, psychology, healthcare, the arts, filmmaking, religion, business, politics, law, and community and environmental affairs.



DAVID ODORISIO, PH.D.
Department Co-chair

EMILY LORD-KAMBITSCH,
PH.D., Department Co-chair

“Storytelling is one of the most ancient and noble of human arts. We use myths and stories to remember and transmit our inherited wisdom, recognize and heal ancestral wounding, and cultivate empathy for one another’s cultural and individual psychological perspectives. Preserving the stories and sacred identities of places also has important ecological implications. The Mythological Studies Program at Pacifica empowers students to engage critically and compassionately with the myths that inspire personal and vocational goals in academic research, teaching, and creative work.”

~ EMILY LORD-KAMBITSCH & DAVID ODORISIO

ACADEMIC FORMAT

The Master of Arts degree is awarded after the first two years of study and successful completion of a comprehensive examination. Students seeking the doctorate degree engage in a third year of coursework that includes a sequence of research courses and the development of a concept paper for the dissertation. The fourth and fifth years of study focus on dissertation writing and research. Continuing supervision is provided for the completion of the dissertation. Mythological Studies classes occur in 3-day sessions (Friday–Sunday) once each month during fall, winter, and spring. There is one five-day summer session each year.

CURRICULUM OVERVIEW

FIRST YEAR

Fall

- Greek and Roman Mythology I – MS 505, 2 Units
- Dreams, Visions, Myths – MS 521, 2 Units
- Arthurian Romances of the Holy Grail – MS 502, 2 Units
- Special Topics in Mythological Studies – MS 599a, .5 Unit

Winter

- Hindu Traditions – MS 503, 2 Units
- Joseph Campbell Metaphor, Myth, and Culture – MS 526, 2 Units
- Ritual and the Embodied Mythic Imagination – MS 603, 2 Units
- Special Topics in Mythological Studies – MS 599b, .5 Unit

Spring

- Approaches to Mythological Studies – MS 620, 2 Units
- Jungian Depth Psychology – MS 511, 2 Units
- Epic Imagination – MS 604, 2 Units
- Special Topics in Mythological Studies – MS 599c, .5 Unit

Summer

- Colloquium – MS 540, 1 Unit
- Mythic Motifs in Cinema – MS 626, 3 Units

SECOND YEAR

Fall

- Alchemy and the Hermetic Traditions – MS 616, 2 Units
- Psyche and Nature – MS 615, 2 Units
- Hebrew and Jewish Mythology – MS 702, 2 Units
- Special Topics in Mythological Studies – MS 699a, .5 Unit

Winter

- Buddhist Traditions – MS 605, 2 Units
- Greek and Roman Mythology II – MS 705, 2 Units
- African Diaspora Traditions – MS 506, 2 Units
- Special Topics in Mythological Studies – MS 699b, .5 Unit

Spring

- Native Mythologies of the Americas – MS 522, 2 Units
- Comic Books as Modern Mythology – MS 670, 2 Units
- Archetypal Psychology – MS 611, 2 Units
- Special Topics in Mythological Studies – MS 699c, .5 Unit

Summer

- Colloquium – MS 640, 1 Unit
- Myth and the Underworld – MS 619, 3 Units
- Comprehensive Exam – MS 800, 0 Units

THIRD YEAR

Fall

- Methods and Contemporary Issues in Religious Studies – MS 720, 2 Units
- Islamic Traditions – MS 608, 2 Units
- Egyptian Mythology – MS 717, 2 Units
- Special Topics in Mythological Studies – MS 799a, .5 Unit

Winter

- Folklore & Fairy Tales – MS 602, 2 Units
- Christian Traditions – MS 703, 2 Units
- Cultural Mythologies I – MS 717, 2 Units
- Special Topics in Mythological Studies – MS 799b, .5 Unit

Spring

- Sex and Gender – MS 609, 2 Units
- Research Strategies for Dissertation Writing – MS 730, 2 Units
- Dissertation Formulation – MS 733, 2 Units

Summer

- Colloquium – MS 740, 1 Unit
- Myths of the Self: Memoir and Autobiography – MS 726, 3 Units

CONTINUING

- Dissertation Writing* – MS 900, 15 Units
- Self-Directed Studies – MS 970, 3.5 Units

*Writing projects for this course take place away from campus. This curriculum may vary depending upon evolving academic needs.

The required fourth and fifth years of study focus on reading, research, and dissertation writing.

Curriculum subject to change.

This degree program is accredited by the Western Association of Schools and Colleges Senior College and University Commission (WSCUC).

Visit pacifica.edu/gainfulemployment for gainful employment information.

M.A./PH.D. IN MYTHOLOGICAL STUDIES

WITH EMPHASIS IN DEPTH PSYCHOLOGY

At the cusp of a paradigm shift in which outmoded mechanistic, reductive modes of thinking are being replaced by more complex, reanimated worldviews, the study of myth, story and fable has an exciting new relevance. The study of myth with its storehouse of narratives and images can help guide us by facilitating our personal and collective transition into a more vibrant reality. Myth reveals the unconscious narratives of both past and present, making the study of myth vitally important to our time. Issues of faith and violence, sexuality, the sacred and the secular, all co-mingle in the tapestry that comprises mythological studies.

Guided by internationally recognized scholars, authors, and educators, Pacifica's Mythological Studies Program invites students to understand the mythological, folkloric, and archetypal structures of the stories that play out in many different arenas all around us—religion, popular culture, politics, the environment, and the arts. The program explores new ways to detect and study the mythic and folkloric motifs revealed in current events, tell stories in ways that bring consciousness to important issues and events, and mentor others in the power of storytelling to transform and renew culture.



Story was our ancestors' most sacred possession. They knew what we do not: that without a founding story, you haven't got a nation, a culture, or a civilization. And without a story of your own, you haven't got a life of your own.

~ TOM BLUE WOLF
CREE ELDER AND STORYTELLER

INQUIRY IN THE CURRICULUM IS SUSTAINED THROUGH COURSEWORK THAT INVESTIGATES:

- Similarities and differences that may be discerned within and between African Diaspora and indigenous traditions, Hinduism and Buddhism, and Judaism, Christianity, and Islam.
- Courses that begin with the classics and progress toward contemporary and postmodern re-visionings in literature, film, music, and art.
- Personal development courses on dreams, visions, and myths; memoir and autobiography.
- Depth psychological courses devoted to the perspectives of Sigmund Freud, C.G. Jung, Marie-Louise von Franz, James Hillman, and Joseph Campbell.
- Research courses on theoretical approaches to the study of myth, ritual, philosophy, methods and contemporary issues in religious studies, and dissertation writing.

PROGRAM GOALS:

The program's curriculum is designed to help students achieve six primary learning objectives or goals that are distributed across four domains of the curriculum.

- Mythology and Religious Traditions: Interpret the primary myths and rituals of a variety of religious and cultural traditions.
- Myth and Literature: Interpret the mythological and archetypal aspects of literature.
- Depth Psychology and Culture: Critically apply the hermeneutics of depth psychology. Interpret the mythic themes and dynamics that are present in contemporary events and popular culture.
- Research and Scholarly Writing: Critically evaluate and utilize scholarly approaches. Critically evaluate cultural assumptions, especially those pertaining to diversity.

MYTHOLOGICAL STUDIES CAREER APPLICATIONS HAVE INCLUDED:

- | | | |
|--------------|--------------------|------------------|
| Educator | Consultant | Graphic Artist |
| Therapist | Organizational | Video Game |
| Screenwriter | Storyteller | Producer |
| Playwright | Literary and | Environmentalist |
| Novelist | Film Critic | Social Activist |
| Life Coach | Performance Artist | |

ALUMNI OF THIS PROGRAM



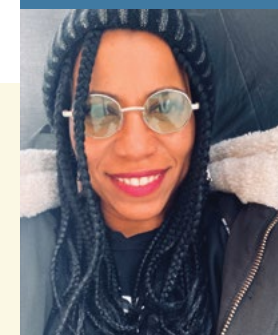
JOHN BUCHER
Ph.D. Mythological Studies
is a mythologist, storyteller, and writer, and serves as Creative Director for the Joseph Campbell Foundation.



DEVON DEIMLER
Ph.D. Mythological Studies
is an artist, writer, adjunct faculty member, and Curator of exhibits and events at OPUS Archives and Research Center



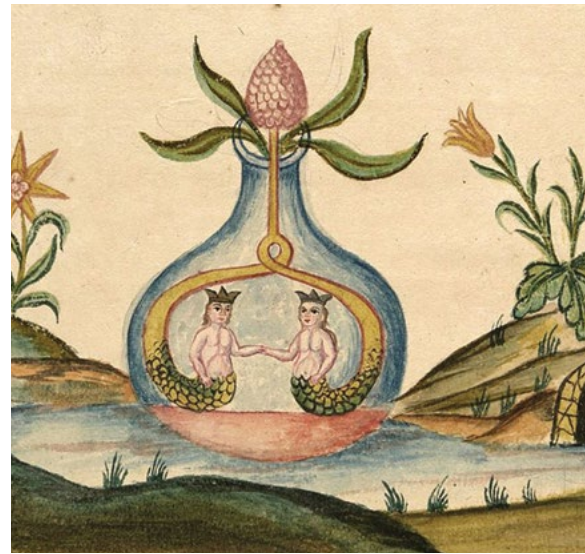
JOANNA GARDNER
Ph.D. Mythological Studies
co-founded and co-leads the Fates and Graces Mythologium, an annual conference for mythologists and friends of myth.



LI SUMPTER
Ph.D. Mythological Studies
is a multidisciplinary artist, scholar, and adjunct faculty member who applies strategies of worldbuilding and mythic design toward building better, more resilient communities of the future.

M.A. IN DEPTH PSYCHOLOGY AND CREATIVITY

WITH EMPHASIS IN THE ARTS AND HUMANITIES*



The Depth Psychology and Creativity program is a unique low-residency Master of Arts program that invites students to discover for themselves—and within themselves—the eternally rich sources of inspiration long-associated with the arts and humanities; including the study of psychology, mythology, philosophy, history, literature, and ecology as they inform the art and craft of living and working with deep purpose, enlivened creativity, and devoted service.

Students in this program learn strategies for tapping into the deep well of the collective unconscious as the ultimate source of creativity. In addition, students discover the value and necessity of working together in creative collaboration, which as reflected in the concept of emergence, inspires and influences new, and unexpected creative expression. Students learn to enhance their inherent creative powers and aesthetic sensibilities through serious and prolonged engagement with the archetypal energies of the creative psyche. Our program is built upon a transdisciplinary worldview, which blurs the artificial boundaries between disciplines. Transdisciplinarity is radically inclusive and non-hierarchical; this allows us to approach marginalized ways of knowing such as

indigenous wisdom traditions, astrology, alchemy, and the sacred with the same depth as our commitment to great literature, visual art, film, performance, new media and the sciences. Students completing this Masters of Arts program will present two substantial creative projects and critically reflect upon their creative processes as they take their experiences out into the world at large.

Creativity is an enigma. As poet and psychoanalyst Clarissa Pinkola Estés has observed, it is a “shapeshifter,” a “dazzling spirit” that appears in all our lives while eluding our attempts to explain its radiance. C.G. Jung regarded creativity as a vital human instinct; a force akin to nature itself, which drives the unfolding and shaping of every life. Creativity is also a calling, one that makes its claim upon individuals who in turn devote themselves to crafting the stories, objects, and experiences that illuminate and transform our world. **The knowledge-making traditions of depth psychology, the arts, and the humanities can inform and nourish every type of creative endeavor, including those dedicated to social justice, climate activism, and communal healing.** In fact, the world itself has its own creativity, manifested in the archetypes of the collective unconscious, whose symbols, images, metaphors, and movements are the *prima materia* of our co-creative and inexorably interconnected lives.

This M.A. program’s approach is broad, highly transdisciplinary, and satisfying for those who seek to combine intellectual exploration with creativity. Honoring Pacifica’s mission to tend soul in and of the world, the program emerges from the depth psychological perspective that artmaking is soul-making as it supports students who crave deeper levels of understanding and devotion in their creative lives. Intellectual rigor is combined with creative expression, encouraging dialogue between students and faculty with a focus on expanding individual and collective potentials as contributors to the unfolding of a more

just, vibrant, and soulful world. **The program is designed for those who seek to live and work more intuitively, meaningfully, and expansively** while fostering the same qualities in others. This program attracts individuals from the visual, performing, narrative, film, video, and media arts; advertising, marketing, architecture, fashion, and design; teachers of every grade level from K-12 to college, plus many from diverse and overlapping fields such as social services, community organization, corporate leadership, somatics, yoga, the healing arts and ministry. A previous professional creative background is not required for admission.



MARY A. WOOD, PH.D.
Core Faculty, Program Chair

SUSAN ROWLAND, PH.D.
Core Faculty, Advisor
in Research and the
Humanities

Our students yearn to understand and deepen their creative callings, but these longings are much more than personal. Through sincere devotion to their gifts, students in the DCH program realize that they are the new myth-makers, the modern alchemists, who must craft the fresh and transformative stories, rituals, objects, and experiences necessary for our collective future. Join us in this vital work.

~ SUSAN ROWLAND & MARY A. WOOD

* Formerly M.A. Engaged Humanities and the Creative Life.

ACADEMIC FORMAT

This hybrid degree program takes advantage of online distance-learning technologies that allow students to work and learn in online classrooms and in their home environments. Additionally, once each quarter, students gather on Pacifica’s Ladera Lane Campus for a four-day weekend (Thursday, Friday, Saturday, and Sunday) in a retreat-style residential. During these on-campus sessions, students have access to the Institute’s extensive resources and are able to deepen community involvement and professional collaboration. They join classmates from around the world in forming professional relationships and networks of like-minded creative individuals. This convenient format brings Pacifica’s graduate degree programs to global citizens and the life-long learners who otherwise might not be able to fulfill their educational and creative callings.

The M.A. program in Depth Psychology and Creativity with emphasis in the Arts and Humanities provides a transdisciplinary education informed by depth psychology, literature, mythology, philosophy and creative practice. The program’s unique learning format combines the best aspects of a connected, soulful, and transformative interpersonal experience with the convenience of distance-learning technologies.

CURRICULUM OVERVIEW

FIRST YEAR

- Creativity and Aesthetic Sensibility – HMC 100, 3 Units
- Comparative Mythology and Contemporary Mythopoesis – HMC 110, 3 Units
- The Complex Nature of Inspiration – HMC 120, 3 Units
- Creative Influence Across the Humanities – HMC 130, 3 Units
- The Expressive Power of Archetypes – HMC 140, 3 Units
- C.G. Jung, Individuation, and the Symbolic Life – HMC 150, 3 Units
- The Purpose and Power of Image – HMC 160, 3 Units
- Project Workshop I: Creative Dialogue and Design – HMC 170, 3 Units
- The Multicultural, Multimedia, Transformative Fairy Tale – HMC 190, 3 Units



SECOND YEAR

- Active Imagination, Dreams, and Psychic Creativity – HMC 200, 3 Units
- Mythic Narratives: Eternal Sources and Contemporary Inflections – HMC 210, 3 Units
- Time, Place, Space, and the Ecology of Creative Expression – HMC 220, 3 Units
- The Healing Power of Creativity – HMC 230, 3 Units
- The Artist as Activist and Agent of Social Change – HMC 240, 3 Units OR
- The Purpose and Power of the Moving Image – HMC 3 Units
- Technology and the Psyche – HMC 250, 3 Units
- Creativity, Vocation, and Alchemical Work – HMC 260, 3 Units
- Project Workshop II: Creative Expression and Reflection – HMC 270, 3 Units
- Selected Topics in Engaged Humanities – HMC 280, 3 Units*

*This course may replace any of the above, and the curriculum may vary depending upon evolving academic needs.

This degree program is accredited by the Western Association of Schools and Colleges Senior College and University Commission (WSCUC).

For gainful employment information, visit pacifica.edu/gainfulemployment

It is generally the creative artist who creates the future. A civilization that has no creative people is doomed. So the person who is really in touch with the future, with the germs of the future, is the creative personality.

~MARIE LOUISE VON FRANZ

M.A. IN DEPTH PSYCHOLOGY AND CREATIVITY

WITH EMPHASIS IN THE ARTS AND HUMANITIES*

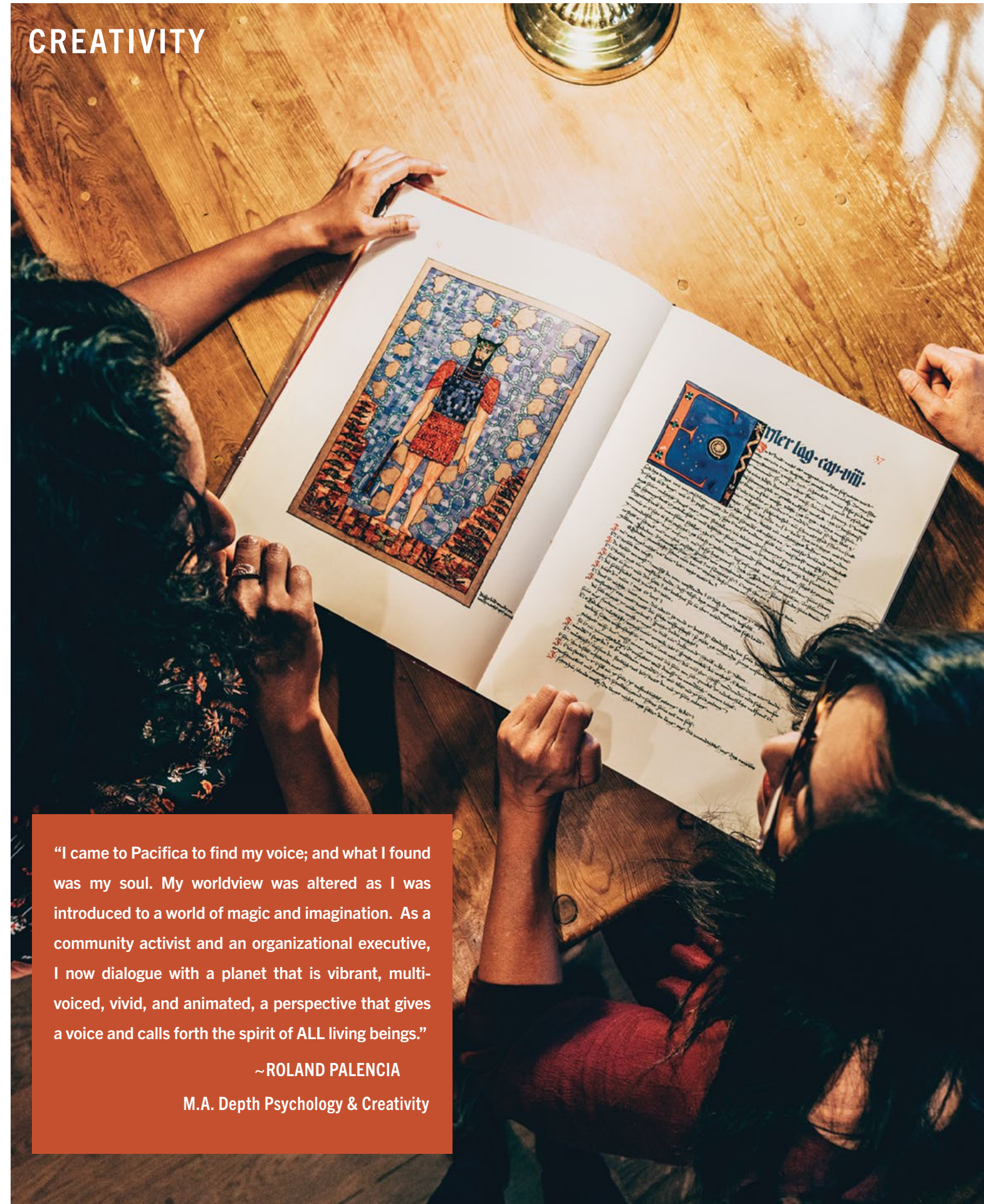
CREATIVE PRACTICE AS INCLUSIVE INQUIRY

“I am stuck,” said C. G. Jung. This is the theme of every fairytale and myth, and it is what everyone says when beginning therapy. Creative individuals understand this theme, and our M.A. in Depth Psychology and Creativity program begins right here. By animating the humanities through creative practice and depth psychology, our program combines creativity and critical thinking necessary for the twenty-first century. DCH develops imaginative spontaneity as psychological resilience. In a time of rapid change, this M.A. prepares us for a future that cannot be wholly predicted.

In addition to increasing intuition, insight and personal transformation, the program also offers students a radical new initiative in Arts-Based Research (ABR), which restores artmaking to knowledge-making. ABR reverses the marginalization of the arts and humanities. Now creative practice can be recognized as central to being and indigenous to making meaning that counts as knowledge. Pacifica’s M.A. in Depth Psychology and Creativity pioneers Jungian Arts-Based Research, or JABR, in bringing archetypes and creativity into knowledge making. JABR can be used to research anything from the psychic impact of weapons of war to the intimate traces of a person’s identity. Along with other significant projects, students on this program design JABR projects to inform, and transform, the heart of academic disciplines. By doing so, students take their place in a major paradigm shift; that of transdisciplinarity.

Transdisciplinarity replaces the subject/object split paradigm that privileges one kind of science, with a paradigm that offers a rightful place to creativity and the imagination, welcomes non-Western cultures, and embraces traditional embodied forms of knowing. Transdisciplinarity fosters diversity in knowing as the foundation for eradicating hierarchies between cultures and consequent racism. Through transdisciplinarity, our M.A. degree is distinctive, empowering, anti-racist, diverse, and forward looking.

It is for anyone who longs to develop and share their fullest potentials in tumultuous times.



“I came to Pacifica to find my voice; and what I found was my soul. My worldview was altered as I was introduced to a world of magic and imagination. As a community activist and an organizational executive, I now dialogue with a planet that is vibrant, multi-voiced, vivid, and animated, a perspective that gives a voice and calls forth the spirit of ALL living beings.”

~ROLAND PALENCIA
M.A. Depth Psychology & Creativity

ALUMNI OF THIS PROGRAM



ROLAND PALENCIA
M.A. in Depth Psych. & Creativity

Roland Palencia serves as the Community Benefits Director and a corporate trainer at the L.A. Care Health Plan. In the early 1980s, he became one of the early founders of the LGBTQ Latin@ movement in the greater Los Angeles area. He has received numerous awards acknowledging his decades of activism and advocacy on behalf of marginalized and under resourced populations. Most recently he was the recipient of the 2021 PGI Chancellor’s Award for Service. His work includes being the former Executive Director at Clinica Monseñor Oscar A. Romero and Equality California, Chief of Operations and V.P at the AIDS Healthcare Foundation, and his current board member activity with ONE Archives Foundation, the longest existing LGBTQ organization in the U.S. He is also Treasurer of Teatro Akabal Theatre, a socially conscious theater group collective. His greatest pride is being a mentor to future generations of progressive activists.



GELAREH KHOIE
M.A. in Depth Psych. & Creativity

An artist, writer, DJ, impresario and budding Jungian scholar. “The Humanities program at PGI is nothing short of a two-year project of transformation. I was one person when I entered, and a vastly different, and better, person when I left. The growth and learning I experienced were exponential, with each new quarter doubling the ante, leading to more and more insights and awakenings. The scholarship is fierce and beautiful, the environment, sublime. I am now living the cohesively integrated creative and professional life I always dreamed of because of the extraordinary two years I spent in this program.”

PACIFICA CORE FACULTY

The members of Pacifica's Core, Adjunct, and Visiting Faculty bring a wealth of knowledge and practical experience to the classroom. They include internationally known authors and lecturers, practicing psychologists and psychotherapists, theologians, and philosophers who share a passion for their vocation and dedication to mentoring students.



Matthew Bennett, Psy.D.



is Co-chair of the Counseling Psychology Department. A licensed psychologist, interested in community mental health, personality disorders, and integrative approaches to models of psyche.

Jorge De La O, M.A.



is a Jungian analyst and professor in the M.A. Counseling Psychology Program. Jorge teaches *The Art of Listening*, *Process of Psychotherapy*, *Analytical Psychology*, and *Multicultural Counseling Theories*.

Jemma Elliot, M.A.



is Core Faculty & Co-chair of the Counseling Psychology Department. A Licensed Marriage and Family Therapist and Clinical Counselor, Jemma focuses on the lifelong process of adoption and extrasensory aspects of trauma.

Lionel Corbett, M.D.



is Core Faculty of Depth Psychology, who founded a program series that integrates spirituality with depth psychology. Extensive study of spiritual disciplines.

Michael Elliott, Ph.D.



is a professor in the Counseling Psychology Department, and past president of the Academic Senate. He also teaches in the Clinical Psychology program.

Susan James, Ph.D.



is Chair of Community, Liberation, Indigenous, and Eco-psychologies Specialization. Focuses on understanding cultural ecologies and disseminating social science research findings.

Fanny Brewster, Ph.D.



is Core Faculty and Jungian analyst. Her books include *Archetypal Grief: Slavery's Legacy of Intergenerational Child Loss* (2018) and *The Racial Complex: A Jungian Perspective on Culture and Race* (2019).

Jaclyn Deilgat, Ph.D.



is Director of Research in Psy.D. Counseling and a licensed clinical psychologist who specializes in treating individuals diagnosed with severe psychiatric illnesses.

Elisabeth Gonella, M.A.



is a Licensed Marriage and Family Therapist working in the mental health and spiritual counseling fields for over 20 years. Her teaching focuses on building clinical skills and insight in students studying counseling psychology.

Patricia Katsky, Ph.D.



is a professor at Pacifica for over 15 years. She is a certified Jungian analyst, and has practiced as a psychotherapist for more than 30 years.

David Odorisio, Ph.D.



is Co-chair of the Mythological Studies Program and editor of *Depth Psychology and Mysticism*; *Merton and Hinduism*; and *A New Gnosis: Comic Books, Comparative Mythology, and Depth Psychology*.

Glen Slater, Ph.D.



is Co-chair of the Jungian and Archetypal Studies program. His scholarship applies depth psychology to cultural phenomena, film, and religion, as well as making commentaries on emerging theories in these fields.

Emily Lord-Kambitsch, Ph.D.



is Co-chair of the Mythological Studies Program. A trained classicist and specialist in Greco-Roman myth and literature, her current research traces memory, longing, and selfhood in the testimonies of women in Greek tragedy.

Nitsa Dimitrakos, Ph.D.



is Core Faculty in the Counseling Department, researching cultural dynamics of development, female voice, alchemy, individuation, the power of myth and storytelling, passions of suffering, and imaginal approaches to clinical practice.

Dylan Hoffman, Ph.D.



is Core Faculty in the Jungian & Archetypal Studies program, who focuses on archetypes as the numinous energies that interconnect spirit, psyche, and matter—and animate, govern, and structure the cosmos as a whole—in relationship to which life gains its deepest meaning.

Keiron Le Grice, Ph.D.



is Co-chair of the Jungian and Archetypal Studies specialization, with research interests in archetypal cosmology, synchronicity, and alchemy. He is the author of several books, including *The Archetypal Cosmos* and *The Rebirth of the Hero*.

Juliet Rohde-Brown, Ph.D.



is Chair of the Depth Psychology: Integrative Therapy and Healing Practices specialization. Published in journals and anthologies, as well as being the author of *Imagine Forgiveness*.

Evans Lansing Smith, Ph.D.



is Core Faculty in the Mythological Studies Program and the author of ten books on comparative literature and mythology. He has taught in Switzerland, Maryland, Texas, and California.

Nuria Ciofalo, Ph.D.



is Core Faculty of the CLIE specialization. She wrote *Indigenous Psychologies in an Era of Decolonization* (2019), in partnership with Maya youths and leaders from Chiapas.

Peter T. Dunlap, Ph.D.



is Acting Chair in Clinical Psychology and is a psychologist working in private and political practice. He is the author of *Awakening our Faith in the Future*.

Gioia Jacobson, M.A.



is a Licensed Marriage and Family Therapist and serves as M.A. Director of Research in the Counseling Department. Her current research focuses on ecopsychology as it relates to clinical practice.

Kathee Miller, M.A.



is Associate Core Professor in the M.A. Counseling Psychology Program, teaching *Process of Psychotherapy*, *Archetypal Psychology*, and *Embodiment and Authentic Movement*. A licensed depth therapist, poet, and photographer.

Safron Rossi, Ph.D.



is a professor of Mythology & Depth Psychology and author of *The Kore Goddess: A Mythology & Psychology*. Her interests include Greek mythology, archetypal psychology, and archetypal astrology.

Tom Steffora, M.A.



teaches Psychopathology, Cultural Psychology, Archetypal, and Imaginal Psychology. He is a clinical consultant and therapist for crisis response and wellness programs for healthcare organizations.

Camille Jarmie Harris, Ph.D.



is a licensed psychologist in private practice, as well as Core Faculty and Associate Chair in the Clinical Psychology program at Pacifica Graduate Institute.

Brenda Murrow, Ph.D.



is Core Faculty and Research Coordinator in the M.A./Ph.D. in Clinical program. Brenda's passions include animals, animal-assisted therapy, play therapy, and research methods.

Ifat Peled, Ph.D.



is a licensed clinical psychologist and an Egala certified equine assisted therapist working in private practice in the Los Angeles area, California.

Elizabeth Nelson, Ph.D.



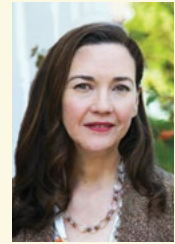
is a professor of courses on dream, imagery, and cultural studies. She specializes in scholarly writing, research process, and dissertation development.

Susan Rowland, Ph.D.



is Core Faculty in the Depth Psychology and Creativity program. She has written on Jung, literature, and gender, including, with Joel Weishaus, *Jungian Arts-Based Research and the Nuclear Enchantment of New Mexico*.

Mary A. Wood, Ph.D.



is Core Faculty and Chair of Pacifica's Depth Psychology and Creativity program. She is a visual artist, writer, artist's mentor, and author of *The Archetypal Artist: Reimagining Creativity and the Call to Create*.

BOARD OF TRUSTEES

Pacifica is guided by a gifted and hard-working Board of Trustees. They have fiduciary responsibility for the Institute, approving and monitoring the budget, as well as overseeing policy and long-range planning. Their contributions and ongoing involvement are invaluable to the school's growth and wellbeing.

Thyonne Gordon, Ph.D.
Board Chair



brings an extensive background in organizational structure and management to Pacifica's Board. She is a business profit strategist, producer, and writer who works with business executives to accelerate their growth.

Dick Osborn, Ph.D.
Trustee



spent 49 1/2 years in K-university education as a 7th/8th grade classroom teacher and principal, parochial high school teacher/principal, superintendent, college president, and accreditation officer.

Nancy Swift Furlotti, Ph.D.
Corporate Secretary



is a Jungian Analyst and past president of the C.G. Jung Institute of Los Angeles. She has been published extensively and lectures internationally on Jungian topics, mythology, the environment, and narcissism.

Frank McMillan M.S.
Trustee



is an award-winning author, educator, and speaker—and the founder of the McMillan Institute for Jungian Studies in Houston, Texas. He currently lectures in Physical and World Geography at Texas A&M University in Corpus Christi.

Simeon R. Stewart II, M.B.A.
Trustee



is the owner of Stewart Manhattan, Inc., and managed a multimillion dollar portfolio of over 500 projects within the state of California. Stewart has earned an MBA from the Marshall School of Business.

Thomas Steding, Ph.D.
Trustee



has been CEO of over ten high-tech companies. He is the founder and chairman of Quadrix Partners, a leadership organization that provides consultation and intervention for creating high execution organizations.

Ada Yeh
Trustee



enjoyed a 31-year career in HR at Warner Bros. Most recently, she was Vice President, Head of Human Resources the Television Groups, including WB Television, Warner Horizon Scripted & Unscripted, WB Animation, Telepictures, and others.

Kate Hogenson M.B.A
Trustee



is a strategic consultant in experiential and retention marketing for Fortune 500 companies. She also does pro bono work for the International Association of Analytical Psychology and the C.G. Jung Institute of Chicago.

EXECUTIVE ADMINISTRATION

Leonie Mattison, Ed.D., M.B.A.
President and CEO

Rica Romero Toribio, Ed.D.
Vice President of Enrollment Management

Larry Byer
Chief Financial Officer

Marvin E. Richards, J.D.
General Counsel

Dianne Travis-Teague
Senior Director of Alumni Relations

Lorraine Devos-Comby, Ph.D.
Interim Provost and Vice President of Academic Affairs

Nicholas Sabatino, M.P.A.
Chief of Staff

Peter Rojcewicz, Ph.D.
Accreditation Liason Officer

PACIFICA ADMISSIONS

Greetings from Pacifica!



There is no feeling as joyous, expansive, and life changing as the moment you get that call or open that letter welcoming you to the right program at the right graduate school. The Admissions team at Pacifica is dedicated to helping you arrive at that moment, and we feel just as excited as our newly accepted students. We are delighted to help you hone your vision by discussing our eight programs traversing

the core ideas of the humanities, as well as the mythologies of culture, the collective human imagination, and ecological symbiosis. And of course, depth psychology, which is the founding principle of the school and what sets it apart as a truly unique institution.

Your job and ours is to determine if Pacifica is the right school for you. Each program has a dedicated Admissions officer who will be your guide on this journey to discover that answer. The entire team is here to see you prosper, walking you through the admission process and assisting you in fine-tuning the best expression of your scholastic pursuits. If you're unclear about which program is the best for you or what first steps you need to take, we are here to talk with you, listen, and advise. Please reach out to us so that we can get to know you and begin the conversation that will lead to that important step: the application.

The process of applying is, of course, charged with excitement and maybe a tingle of nerves, but it should also be easy to complete. The letters of recommendation, admission essays, financial aid application, and the other elements of Pacifica's application can clarify your own vision of who you are now and who you wish to become through the personal and professional process of graduate work. The highlight of our job is calling a prospective student, who we have gotten to know during the process of application, and giving them that good news: Welcome to Pacifica!

Personally, I am proud to help forge future academic and professional leaders in an environment that fosters a multicultural space and values tolerance for each individual's unique qualities. As you endeavor this rigorous yet rewarding intellectual odyssey, rest assured that you have the support of Pacifica's Admissions team. We look forward to having you join us.

With appreciation,
Rica Romero Toribio, Ed.D.
Vice President of Enrollment Management



APPLICATION AND ADMISSIONS PROCESS

1 SUBMIT AN ONLINE APPLICATION

2 COMPLETE YOUR APPLICATION FILE

3 REVIEW BY ADMISSIONS COMMITTEE

4 INTERVIEW

5 ACCEPTANCE

Open your application file by submitting an online application at pacific.edu. You will be asked to provide general information and pay the application fee. When the Admissions Office receives this information, an application file will be created and you will be prompted to submit additional documents to complete the admissions process.

After you have submitted the required application documents, your completed application file will be sent to the Admissions Committee for review and consideration for an interview. Upon recommendation by the committee, you will be invited to interview.

Applicants who have been accepted submit a non-refundable deposit and enrollment agreement forms for confirmation. The deposit and forms must be received within 14 days of receipt of acceptance. Those who are unable to attend the current academic year must submit a new application and updated documents in order to be considered for acceptance at a later date.

Interviews are a required step in the Pacifica admissions process. The interview addresses a number of important topics concerning the applicant's potential to engage in graduate studies. They include past educational experience, emotional maturity, personal readiness, and experience related to the applicant's chosen program of study and future goals. Applicants will be invited to either virtual or in-person interviews. Notifications of the Admissions Committee's decision will be sent after the interview.

DOCUMENTS REQUIRED TO COMPLETE THE APPLICATION FILE*

DEGREE PROGRAM	Personal Statement	Resumé or CV	Academic Writing Sample	Letters of Recommendation	Official Transcripts
M.A. in Counseling Psychology**	Yes	Yes	4-7 page Academic Writing Sample	2 Letters with Recommendation Form	Yes
Psy.D. in Counseling Psychology*	Yes	Yes	8-10 page Academic Writing Sample	3 Letters with Recommendation Form	Yes
M.A./Ph.D. in Clinical Psychology*	Yes	Yes	Minimum 10 page Academic Writing Sample and Additional 1-to-2 pages on your interest in Depth Psychology	3 Letters with Recommendation Form	Yes
M.A./Ph.D. in Depth Psychology with Specialization in Jungian and Archetypal Studies	Yes	Yes	8-10 page Academic Writing Sample	3 Letters with Recommendation Form	Yes
M.A./Ph.D. in Depth Psychology with Specialization in Community, Liberation, Indigenous, and Eco-Psychologies	Yes	Yes	Minimum 10 page Academic Writing Sample	3 Letters with Recommendation Form	Yes
Ph.D. in Depth Psychology with Specialization in Integrative Therapy and Healing Practices	Yes	Yes	8-10 page Academic Writing Sample	3 Letters with Recommendation Form	Yes
M.A./Ph.D. in Mythological Studies	Yes	Yes	8-10 page Academic Writing Sample	3 Letters with Recommendation Form	Yes
M.A. in Depth Psychology and Creativity	Yes	Yes	4-7 page Academic Writing Sample	2 Letters with Recommendation Form	Yes

*Please submit all application documents (transcripts, letters of recommendations, personal statements etc.) to applicant@pacific.edu. Physical documents may be sent to: Pacifica Graduate Institute, 249 Lambert Road, Carpinteria, CA 93013.

**Programs preparing students for licensure also require an Acknowledgement of Licensure Requirements Information Form.

Pacifica's Office of Admissions has designated advisors for each degree program who are happy to assist throughout the application and admissions process.

The Office of Admissions will notify you each step of the way as application file documents are received, and will keep you advised of upcoming deadlines.

Admissions advisors are always available to answer questions and provide information on academic calendars, program start dates, suggested reading lists, and scheduling a campus tour.

Email admissions@pacific.edu or call 805.879.7305.

International applicants are also required to submit:

International transcripts must be evaluated to determine U.S. equivalency.

We will accept evaluations from current members of NACES and AICE.

Where applicable, international applications must submit TOEFL results during the application process for admissions and prior to acceptance.

We require the following scores:

IELTS: 7; TOEFL: 230 computer-based test; 570 written test; or 90 Internet-based test; and Cambridge Exam: Pass at Grade B.

FINANCIAL AID



While financing an education can be challenging, the Office of Financial Aid is committed to making this process manageable. The purpose of financial aid is to provide financial assistance to students enrolled on at least a

half-time basis (minimum of three units/quarter) in an eligible program at Pacifica Graduate Institute. Pacifica offers a number of scholarships each year to those applicants who show high financial need and academic merit. Scholarship applications are available by request and on the Office of Financial Aid website beginning January 1st. To be considered, all new applicants must be accepted to a program of study, complete the annual Free Application for Federal Student Aid (FAFSA) form using Pacifica's school code (G31268), and submit the scholarship application and essay by the deadlines. International students, instead of the FAFSA, must complete the International Student Addendum within the scholarship application by the deadline. Refer to the scholarship application for details and instructions.

Some students have been successful in their search for outside scholarships. We recommend internet researching other sources of educational assistance, including foundations, community organizations, your employer, and state agencies for higher education. Be aware you should not have to pay for a scholarship search. To begin your search, go to [pacifica.edu](https://www.pacifica.edu) and click on Types of Financial Aid from the Financial Aid Tab.

At the graduate level, the primary sources of funding are loan programs. Pacifica participates in the U.S. Department of Education's Federal Direct Loan program. The Direct Loan program provides students with access to federally Unsubsidized Stafford loans as well as Graduate PLUS loans by allowing students to borrow directly from the U.S. Department of Education rather than a private lender. For more details regarding loan options, visit studentloans.gov.



PACIFICA SCHOLARSHIPS

COMMUNITY, LIBERATION, INDIGENOUS, AND ECO-PSYCHOLOGIES PROGRAM MATCHING GRANT:

Offered to newly admitted students in the M.A./Ph.D. Depth Psychology with Specialization in Community, Liberation, Indigenous, and Eco-Psychologies program. Pacifica will match (through tuition grant) tuition support offered by an incoming student's employer (not-self employed), non-profit organization, sponsoring member of the community (not a family member), or foundation. The number and amount of individual awards is contingent upon the number of eligible applications received. Applicants should have experience in and commitment to working in community-based settings or on environmental or cultural issues. The matching funds awarded will be renewable throughout a student's course of study in conjunction with their sponsoring source.

EDUCATION ASSISTANCE: Offered to new and returning students based on financial need and strong academic excellence. This scholarship is not renewable and students must apply each academic year by the published deadline.

FOUNDERS SCHOLARSHIP: Offered to newly admitted students entering the M.A. Counseling Psychology program. The scholarship will be awarded to four students and is renewable, provided recipients meet the required grade point average. Applicants should show high financial need and strong academic excellence.

GLOBAL INNOVATORS SCHOLARSHIP:

Offered to newly admitted students entering into one of the following programs: M.A. in Depth Psychology and Creativity, or M.A./Ph.D. Depth Psychology with Specialization in Jungian and Archetypal Studies. The number and amount of individual awards is contingent upon the number of eligible applications received. This scholarship is renewable, provided recipients meet the required grade point average.

HERMAN WARSH SCHOLARSHIP: Offered to newly admitted students entering the M.A./Ph.D. in Depth Psychology with Specialization in Community, Liberation, Indigenous, and Eco-Psychologies program. The number and amount of individual awards is contingent upon the number of eligible applications received. This scholarship is renewable, provided recipients meet the required grade point average.



JOSEPH CAMPBELL SCHOLARSHIP: Offered to newly admitted students entering into the M.A./Ph.D. in the Mythological Studies program. The number and amount of individual awards is contingent upon the number of eligible applications received. This scholarship is renewable, provided recipients meet the required grade point average.

PEACE CORPS PAUL D. COVERDELL FELLOW PROGRAM: The Peace Corps, in partnership with Pacifica, is pleased to offer the Paul D. Coverdell Fellowship Program to returned Peace Corps volunteers.

Students are encouraged to apply for all applicable scholarships by the published deadline. However, Pacifica-sponsored scholarships cannot be combined with other Pacifica Graduate Institute scholarships. Only one Pacifica-sponsored scholarship can be awarded per student. Visit the Pacifica financial aid webpage at <https://www.pacifica.edu/financial-aid>.

C.G. AND EMMA JUNG SCHOLARSHIP: Offered to newly admitted students entering the Ph.D. Depth Specialization in Integrative Therapy and Healing Practices. The number and amount of individual awards is contingent upon the number of eligible applications received. This scholarship is renewable, provided recipients meet the required grade point average.

JUNG/FREUD CLINICAL PSYCHOLOGY SCHOLARSHIP: Offered to newly admitted students entering the M.A./Ph.D. Clinical Psychology program. The number and amount of individual awards is contingent upon the number of eligible applications received. This scholarship is renewable, provided recipients meet the required grade point average.

PSY.D. COUNSELING PSYCHOLOGY PROGRAM SCHOLARSHIP: WASC approved, Department of Education and State of California under review. Watch for future updates and scholarship opportunities.

POST 9/11 GI BILL®—YELLOW RIBBON SCHOLARSHIP: Yellow Ribbon Scholarships are offered for qualifying Veterans under the Post 9/11 Bill.

SEGAL AMERICORPS MATCHING SCHOLARSHIP: Offered to qualified AmeriCorps Alumni enrolled in one of our Master or Doctoral programs. A total of five new scholarships will be available on a first-come, first-served basis.

STUDENT SERVICES

Joseph Campbell said that sacred space was “a place where you can simply experience and bring forth what you are and what you might be.” Student Services is committed to the holistic development and success of all students and offers a range of administrative and academic support services. These services include mentorship opportunities with alumni, academic planning, disability services, online student resource centers, professional development, student life, and more. Student Services mindfully serves a diverse, post-traditional student body and accompanies students throughout their academic career at Pacifica.



Accessibility also includes appropriate accommodations to equalize the learning environment for students with disabilities. The human side of these values highlight the importance of open communication, respectful relationship, care, and a heartfelt regard for a diverse and inclusive community, which includes a love for learning as a noble goal of the human spirit. As Clarissa Pinkola Estes said, “Any small, calm thing that one soul can do to help another soul... will help immensely. It is not given to us to know which acts or by whom, will cause the critical mass to tip toward an enduring good.”

~ LAUREN LASTRA & NICHOLAS SABATINO,
CO-DIRECTORS, ACADEMIC AFFAIRS & STUDENT SERVICES



Lifelong learning and empowerment. We believe in teaching skills (e.g., writing, research, and information technology) to our students throughout their time at Pacifica. Our goal is to empower our students so that they continually develop skills both here and as they continue towards their preferred career and life path.

Accessibility. Available anywhere and from their own devices, students have 24/7 access to several services that help remove the physical barriers to education. These include the Library’s robust collections of eBooks, journals, dissertations, as well as its research assistance, and Pacifica’s learning management system (Desire2Learn), and student email. Accessibility also includes appropriate accommodations to equalize the learning environment for students with disabilities.

Digital and relational environments. While we realize that online communication/learning tools and video are likely already part of our students’ personal lives, we also strive to ensure we relate to our students on a personal and connected level, whether that is in-person or in digital environments.

Practicality. The services we provide are congruent to Pacifica’s mission, relevant, and aligned with meaningful outcomes to ensure our students get the most out of their educational investment.

Personalized assistance. Our students have individual preferences, backgrounds, and expression. We strive to provide specialized personal guidance, resources, and advice when our students need them.

COMMUNITY AT PACIFICA

Many Pacifica students have noted that when starting their academic careers at Pacifica, they did so because it felt like they had found their calling, or that they had come home. In a recent survey of our first-year students on their initial impressions of Pacifica after their first-quarter experience, 80% responded that they felt a sense of belonging here and 87.25% shared that the cohort experience either met or exceeded their expectations. We feel this speaks to the deep sense of community at Pacifica and the “sense of place” that Joseph Campbell felt was so important.

DIVERSITY & INCLUSION COUNCIL



“It is a great pleasure for me to serve as Chairperson for our Diversity and Inclusion Council at this important time of cultural change at Pacifica Graduate Institute. The Council is a team of 12 individuals who each contribute in a unique way to this transformative process. The Council initiated a first-ever, pan-Pacific event, the Diversity Symposium, that has positively influenced our entire community’s ability to engage and relate to one another in a much deeper and responsive manner. Our Council continues to create a vision of equity that exists for all members of our Pacifica community.”

~ FANNY BREWSTER, PH.D., M.F.A., CHAIR OF THE DIVERSITY & INCLUSION COUNCIL

MISSION STATEMENT:
The Diversity and Inclusion Council commits to actively support an inclusive, equitable, culturally competent educational community that respectfully welcomes, engages, and supports the richness of diversity: cultural, racial, gender, sexual orientation, class, geography, religion, learning style, able-bodiedness, age, and appearance.

Diversity in the student body, faculty, staff, board, and administration is an essential component of the learning experience at Pacifica Graduate Institute. The purpose of the Diversity and Inclusion Council is to nourish an atmosphere at Pacifica that promotes, respects, and encourages diversity in its fullest sense. In order to achieve greater diversity, concerted effort is necessary in decision-making processes, recruitment practices, and retention efforts. To build an atmosphere of hospitality toward differences, Pacifica encourages cross-cultural dialogue, explores pedagogies that enlist awareness of diversity in the learning process, and regularly reviews its policies and procedures, as well as the curriculum with regard to issues of diversity.

Appreciation for diversity begins with thoughts and attitudes that support multicultural environments. Pacifica engages in a process of self-evaluation regarding institutional, collective, and individual racism, and other bias in order to work toward a more inclusive learning environment. To this end, Pacifica encourages regular dialogue on issues of diversity among the staff, faculty, and student body. Depth psychology is a historical, philosophical, and practical conversation of diverse voices with multiple, yet related, points of view on interiority, culture, context, the unconscious, imagination, dialogue, transformation, myth, symbol, symptom, and healing. We actively support an educational environment that respectfully welcomes the richness of cultural, racial, gender, sexual orientation, class, religion, learning style, able-bodiedness, age, appearance, political affiliations, and other even as yet unnamed differences, which all who study and work in this Institute bring as gifts for a learning community.



WHY PACIFICA NOW?

What kind of vocation will you seek in the future?

What is speaking to your psyche during these times?

How will you live in the face of continuous change, challenge, and adversity?



Now more than ever, we must embrace the notion that a wound, through “tilling” the ground of our being with embodied inquiry, may become a generative and flowering tree of creative expression, contemplative, symbolic living, mindful passages, embodied wellness, and social engagement. So how does Pacifica answer that inquiry?

At Pacifica, our graduate education provides students with a soul-centered “intelligence” integral to what is being asked of us now. Extending the concepts of psychology and mythological studies beyond the personal, beyond the consulting room, and beyond the classroom, we see psychological life as an evolutionary development within nature, alive in all the phenomena and systems of our world. In studying and working with these multidimensional exchanges, we facilitate contributions to the contemporary concerns of our world through dialogues between the psyche of the individual, the mythologies of the culture, the collective human imagination, and the living planet.

SO WHY PACIFICA NOW?

With each of our accredited degree programs having roots in the rich soil of depth psychology, we are cultivating new ways of knowing and being with one another, with attunement to the holistic aspect of the environments and the complex world in which we live. Only through deeply felt awareness of the profound interconnectedness of our world can a hopeful path through these times be discovered. Pacifica, as ever, is devoted to re-imagining and finding our way through.

What kind of vocation will you seek in the future? Consider one that answers the demands of our time.

The world is changing so rapidly now that what were formerly considered safe, stable careers can vanish overnight. We must be creative. We must be imaginative. We must be adaptive. Like the chemist who discovered the benzene ring by dreaming about it, we enjoy an advantage of foresight by tending the life of the unconscious, where—as C.G. Jung pointed out—the seeds of the future grow in the fertile dark. What will surface as new trends, new industries, and new forces set loose in collective life germinate first in the depths of consciousness.

That is why programs at Pacifica extend concepts beyond the classroom to develop an array of skills for use in many occupations, some of which do not yet exist.

CAREERS OF THE FUTURE

To get you thinking...

- As global warming accelerates, who will become the next experts in ecoresilient community-building?
- Where are the coaches and counselors who can help with the stress of being tracked or attacked online?
- Who are the mediators who can put young and old back together so future generations will keep touch with their roots?
- What about ceremonial workers for national or global disasters?
- Today we face forms of trauma never before witnessed. What sorts of counselors do we need for that?

There are more career possibilities opening up than people to fill them, and this will only continue as we adapt to the new norms we face for our ever-changing, complex world. Depth psychology offers the possibility of sensing them from within our psyche and aligning ourselves with what they demand. Active imagination, work with dreams and synchronicities, exploration of the body-psyche, integration of thought and feeling, the practical and the inspirational: these and other depth tools give us glimpses into the pathways opening ahead of us.



Curious as to what innovative career moves our graduates have already made?

- Creation of a non-profit to teach urban adolescent males to develop a sense of purpose and community.
- Writing and publishing on addiction, with an appearance on *Larry King Now*.
- Filmmaker living in New Zealand and working on films like *The Hobbit*.
- Award-winning Hollywood script writing trainer.
- Founder of a cloud-based practice management system for behavioral health and wellness professionals.
- President of customer-centered marketing company that welcomes participation and feedback.
- Consultant on “developing businesses with soul.”
- *New York Times* writer and creator of the Traditional Cultures Project’s multimedia presence.
- Founder of a journal dedicated to “applied mythology, legend, and folktale.”
- Journalist and documentarian on women in prison.
- Founder of an “educational program promoting social emotional learning, peace building, and joy through creative expression.”

We invite you to take hold of your future and join us as we discover the deep connection between natural and human events so that we may begin healing the wounds of our world. As you search for your meaningful career, we invite you to make room for the possibility that your career is also searching for you, the person who can bring it into being.

VISIT PACIFICA ON CAMPUS

The best way to learn more about Pacifica is to attend The Pacifica Experience, a one-day introduction to the Institute's degree programs.

These special events are held throughout the year. For a schedule of upcoming one-day introductions and to register online visit pacifica.edu.

We cordially invite you visit Pacifica; contact the Admissions Department to schedule a campus tour.

For additional information on application and admissions procedures, call the Pacifica Admissions Office at 805.879.7305 or email admissions@pacifica.edu.

VISIT PACIFICA ONLINE at pacifica.edu

Read about topics related to depth psychology on Pacifica's Blog, *The Pacifica Post*.

Access Pacifica's Social Media.

View a schedule of upcoming Admissions and Retreat Programs.

Download Pacifica's current Course Catalog and Financial Aid Guide.

Submit an Online Application.
Take a virtual tour of our campuses.





ANIMAE
MUNDI
COLENDAE
GRATIA

For the sake
of tending soul
in and of
the world

PACIFICA
GRADUATE INSTITUTE
Santa Barbara, California